



TRANSWESTERN

REAL ESTATE
SERVICES

RETAIL SPACE FOR LEASE

YORKDALE SHOPPES

SOUTHDALE TRADE AREA

JANET OLSON | 612.359.1681
janet.olson@transwestern.com

OVERVIEW



AVAILABLE FOR LEASE

- 1,090 SF Space 6807F
- 2,162 SF Space 6815



2022 EST CAM/TAX

- CAM/Insurance \$ 4.10 psf
- Property Taxes \$13.61 psf
- TOTAL: \$17.71 psf



DEMOGRAPHICS

	1 Mile	3 Mile	5 Mile
Population	17,016	121,902	303,862
Daytime Population	25,510	159,704	368,671
Median HH Income	\$58,747	\$76,562	\$70,943
Average HH Income	\$84,921	\$111,822	\$102,397

* Sources: ESRI 2022 est & MN Dept of Transportation 2021 Study avgs are per day total cars



TRAFFIC COUNTS

- 20,348 vpd - York Avenue
- 14,588 vpd - 66th Street



HIGHLIGHTS

Anchored by Cub Foods and located across from Southdale Mall at a signalized intersection, Yorkdale Shoppes is a high traffic center perfect for retailers and service providers. Pylon signage is available to qualified premises.

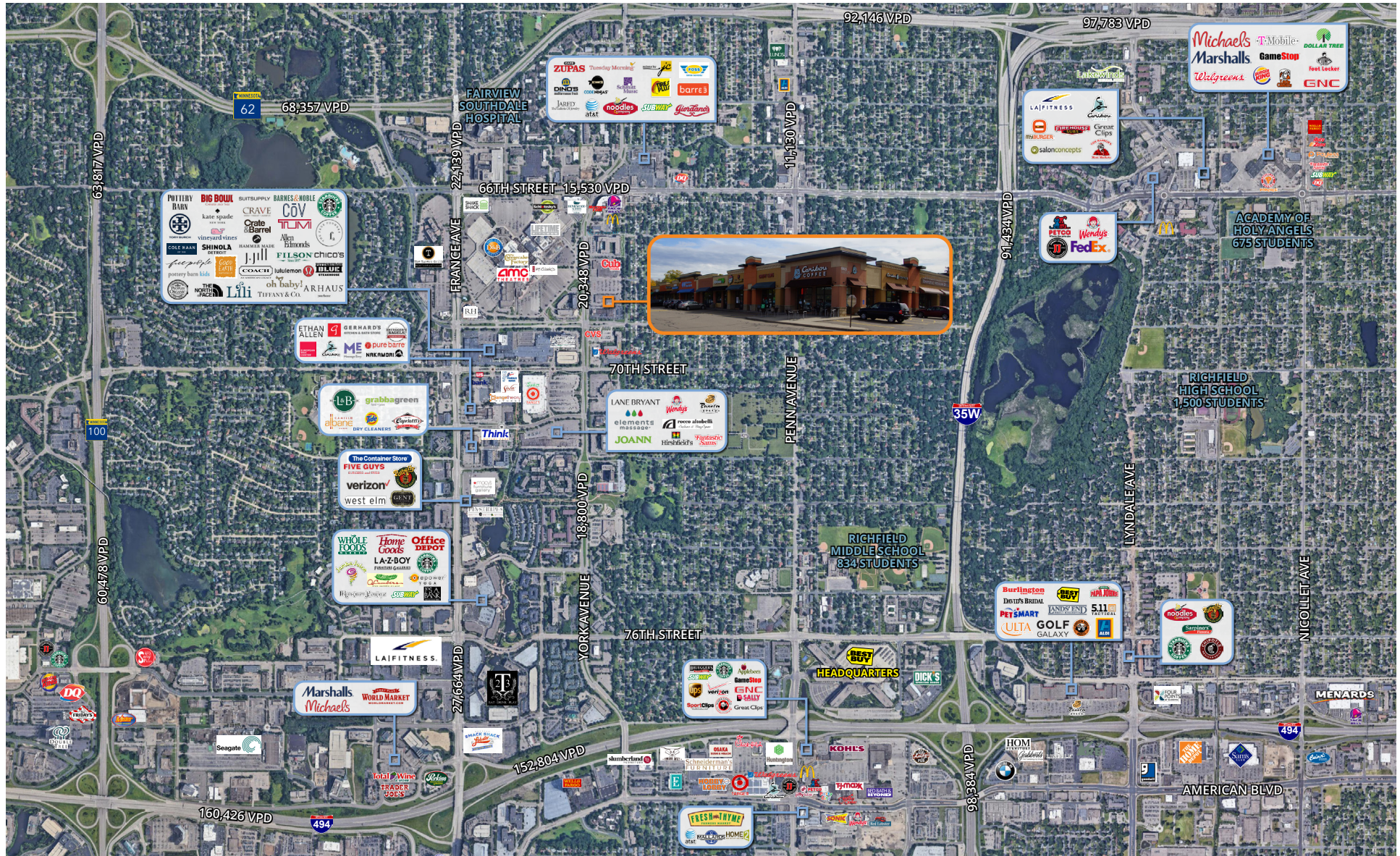


TENANTS

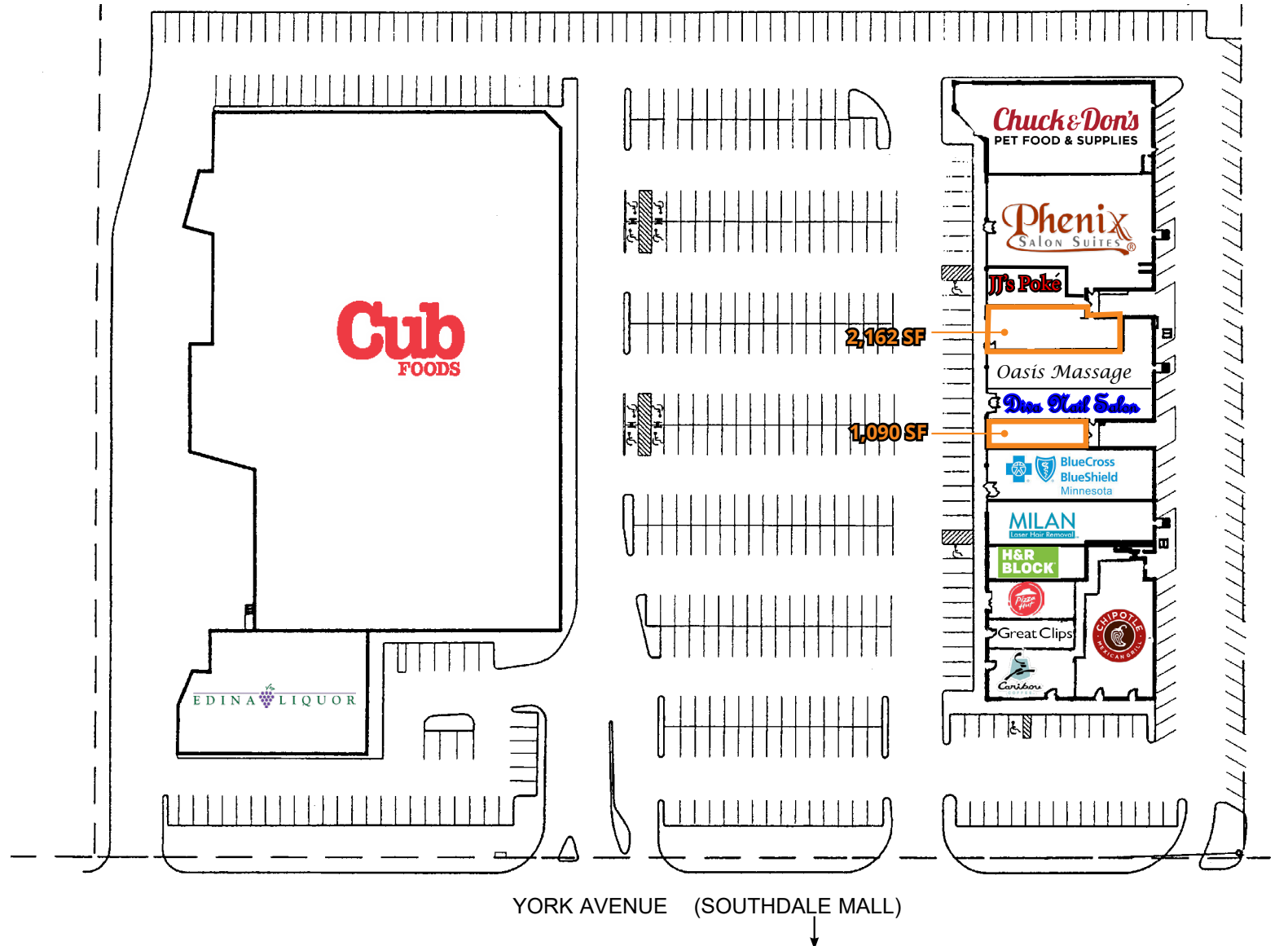


AREA TENANTS

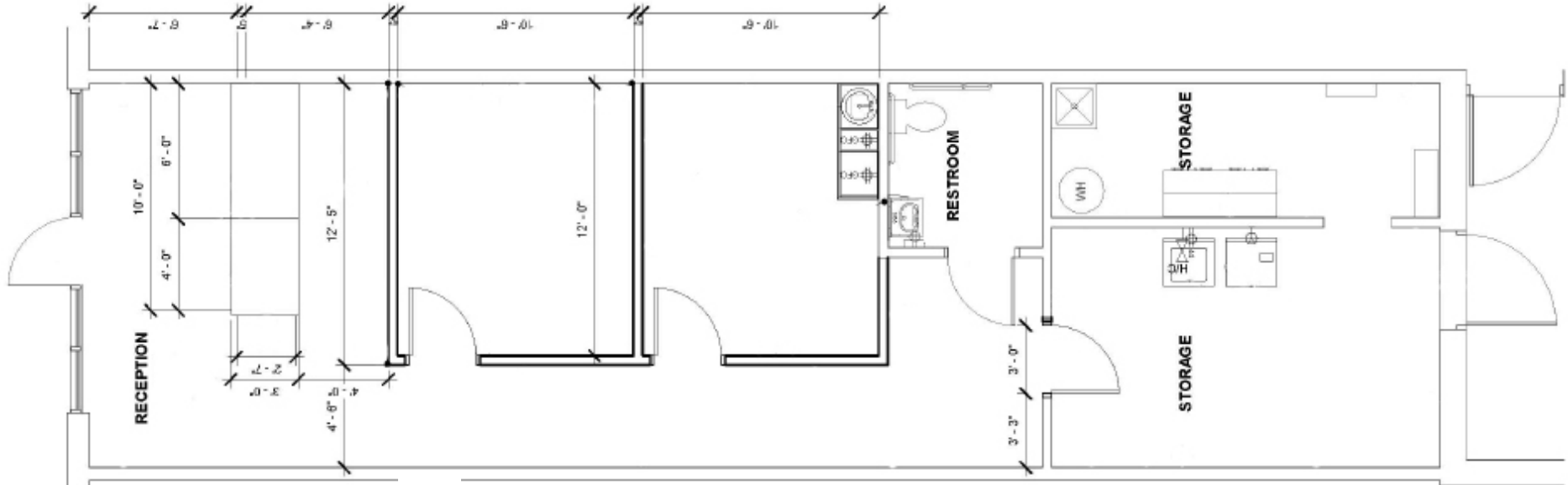




OVERALL SITE PLAN



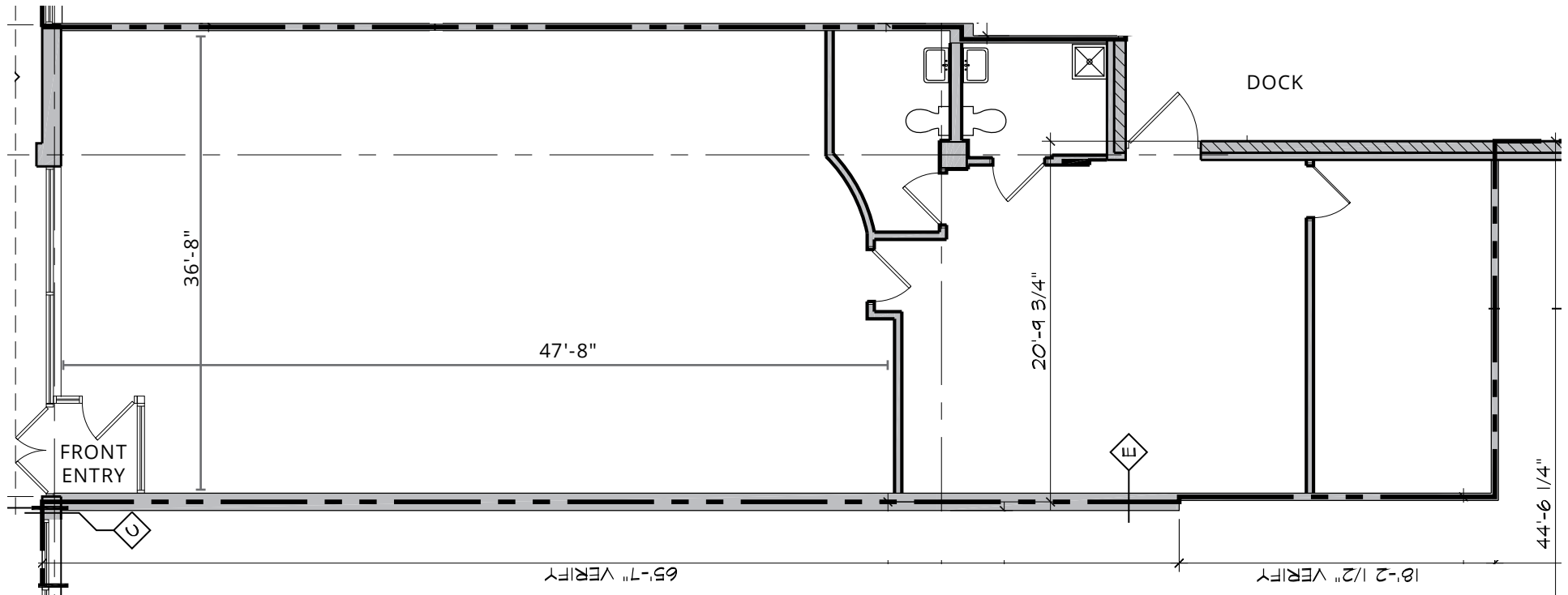
SITE PLAN - 1,090 SF



PHOTOS - 1,090 SF



SITE PLAN - 2,162 SF



PHOTOS - 2,162 SF

