

**FOR LEASE 8,242 SF OFFICE / WAREHOUSE**

**TRANSWESTERN**

5353 W. Sam Houston Parkway N | **Suite 130** | Houston, TX 77041

**PARK 8 PLACE**  
E I G H T



**CONTACTS**

**JUDE FILIPPONE**

+1 713 270 3318

jude.filippone@transwestern.com

**BRIAN GAMMILL**

+1 713 270 3321

brian.gammill@transwestern.com

**BUCHANAN STREET**  
PARTNERS, L.P.

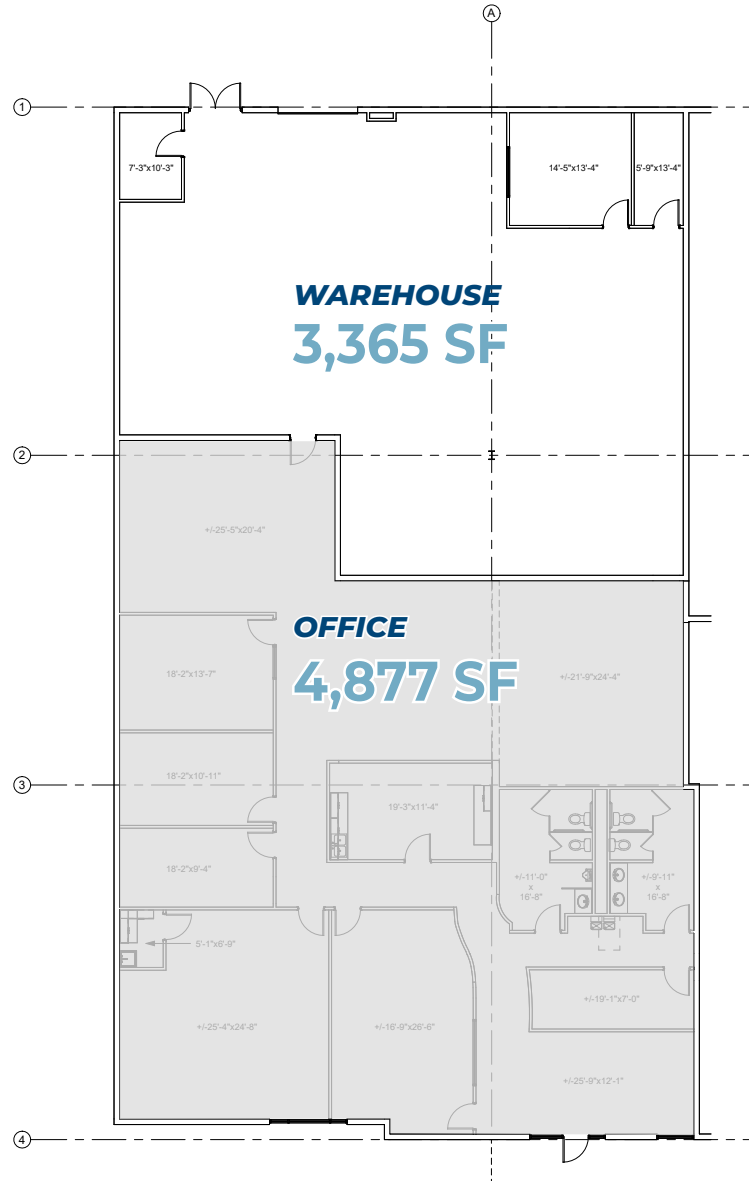


## FLOOR PLAN - 8,242 SF

# PARK 8 PLACE

## EIGHT

5353 W. Sam Houston Parkway N | Suite 130 | Houston, TX 77041



### PROPERTY FEATURES

**19'**  
Clear Height



Master Planned  
Environment



One (1)  
Grade Level Door



Excellent Beltway  
Visibility



Fully  
Sprinklered



Outstanding Visibility  
and Corporate Identity



Institutional  
Ownership



Concrete Tiltwall  
Construction





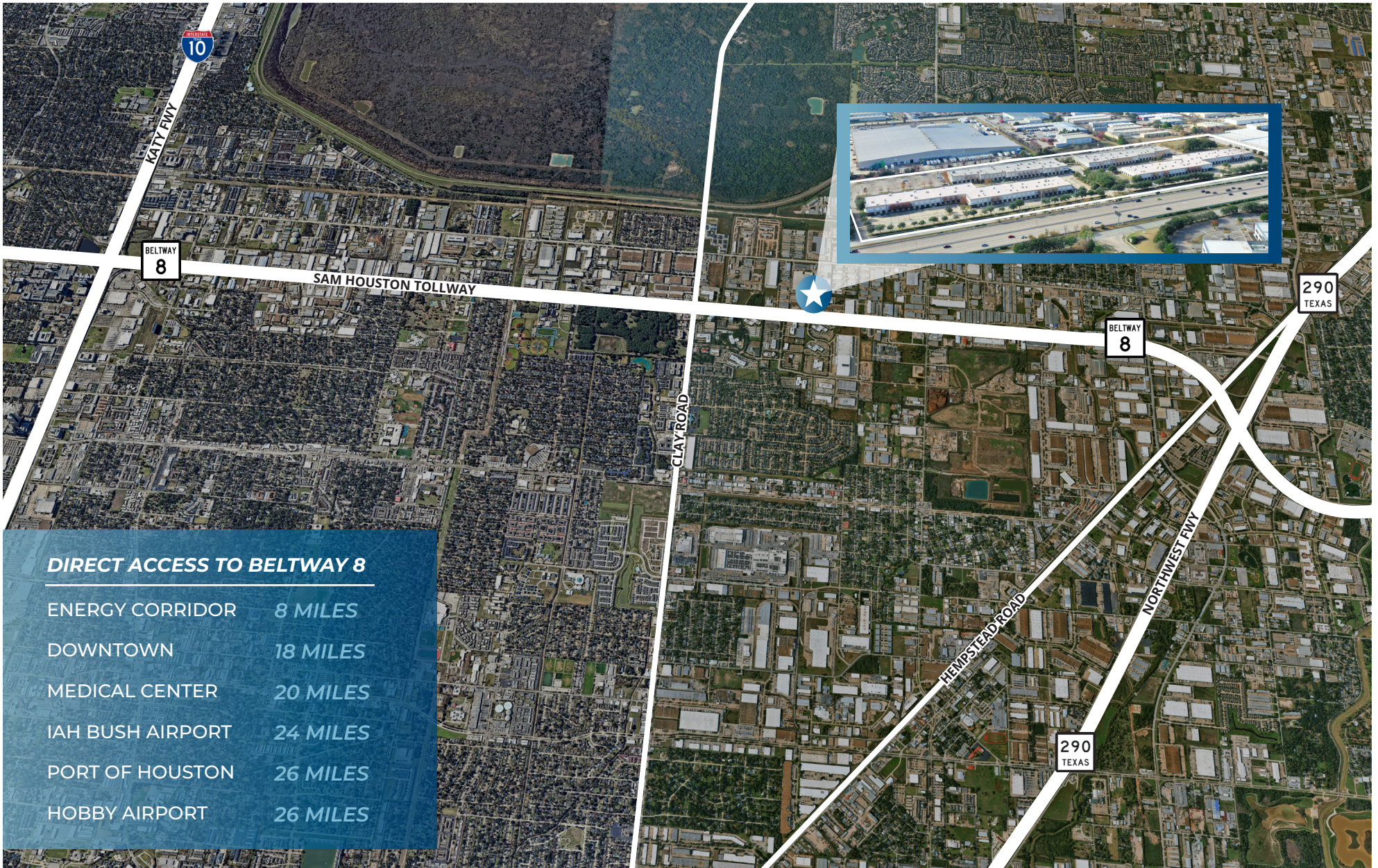
## AERIAL MAP

# PARK 8 PLACE

## EIGHT

### Prime West Houston Location

5365 W. Sam Houston Parkway N | Suite 490 | Houston, TX 77041



#### DIRECT ACCESS TO BELTWAY 8

ENERGY CORRIDOR	8 MILES
DOWNTOWN	18 MILES
MEDICAL CENTER	20 MILES
IAH BUSH AIRPORT	24 MILES
PORT OF HOUSTON	26 MILES
HOBBY AIRPORT	26 MILES



# PARK 8 PLACE

EIGHT

SUITE 130 | 8,242 SF

BELTWAY  
8

 **TRANSWESTERN**  
**LEASING CONTACTS**

**JUDE FILIPPONE**  
+1 713 270 3318  
[jude.filippone@transwestern.com](mailto:jude.filippone@transwestern.com)

**BRIAN GAMMILL**  
+1 713 270 3321  
[brian.gammill@transwestern.com](mailto:brian.gammill@transwestern.com)

*OWNED BY*  
**BUCHANAN STREET**  
*PARTNERS, L.P.*