

**OFFICE
SUBLEASE**

UP TO
122,800 SF

CLASS A
OFFICE SPACE

PLUG & PLAY



EIGHTY-EIGHTY CENTRAL

8080 North Central Expressway - Dallas, Texas 75206

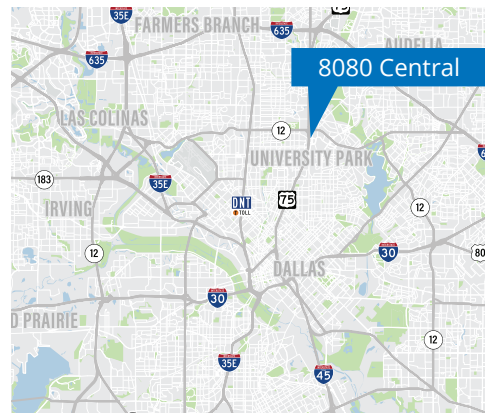


Building Features:

- Excellent ingress/egress to North Central Expressway
- 100% covered, structured parking
- Full service Cafe
- On-site property management and engineering staff
- 24/7 security, after-hours key-card access system at all primary entrances and elevators for after-hours use with individual floor codes
- Full service bank located in lobby
- Year Built: 1984

Sublease Features:

- Up to 122,800 SF Available
- Includes 6 full floors
- Office intensive and open floor concepts
- F, F & E available
- Master lease expires October 31, 2022
- Parking Ratio 3.75/1,000 SF



Leasing Information:

Chris Lipscomb
214.237.5022
chris.lipscomb@transwestern.com

Hanna Henley
214.292.6428
hanna.henley@transwestern.com

The information provided herein was obtained from sources believed reliable; however, Transwestern makes no guarantees, warranties or representations as to the completeness of accuracy thereof. The presentation of this property is submitted subject to errors, omissions, change of price or conditions, prior to sale or lease, or withdrawal without notice. Copyright © 2021 Transwestern.



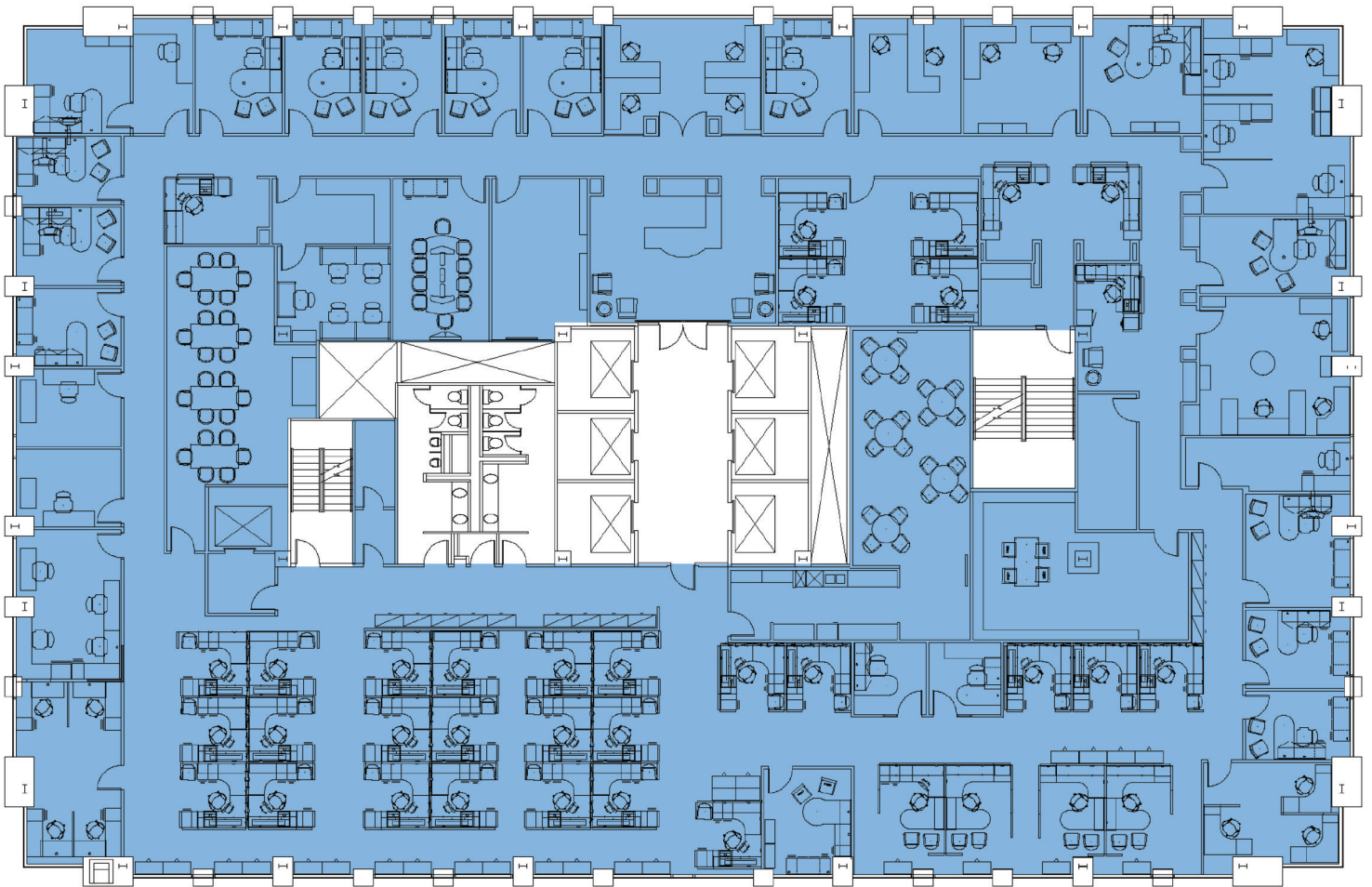
TRANSWESTERN

REAL ESTATE
SERVICES

EIGHTY-EIGHTY CENTRAL

8080 North Central Expressway - Dallas, Texas 75206

Fifth Floor - 17,017 RSF



Leasing Information:

Chris Lipscomb

214.237.5022

chris.lipscomb@transwestern.com

Hanna Henley

214.292.6428

hanna.henley@transwestern.com

The information provided herein was obtained from sources believed reliable; however, Transwestern makes no guarantees, warranties or representations as to the completeness of accuracy thereof. The presentation of this property is submitted subject to errors, omissions, change of price or conditions, prior to sale or lease, or withdrawal without notice. Copyright © 2021 Transwestern.



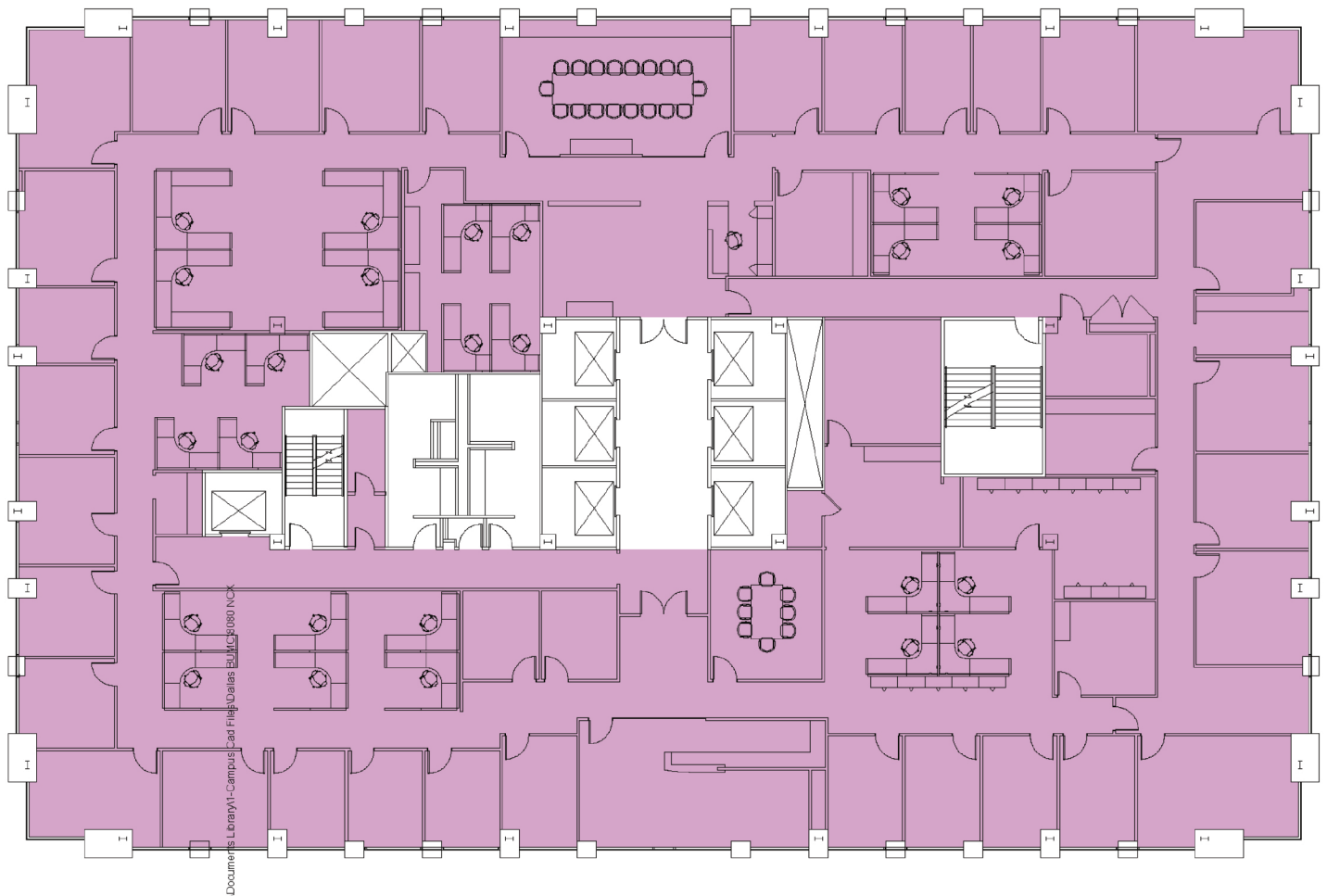
TRANSWESTERN

REAL ESTATE
SERVICES

EIGHTY-EIGHTY CENTRAL

8080 North Central Expressway - Dallas, Texas 75206

Sixth Floor - 17,811 RSF



Leasing Information:

Chris Lipscomb

214.237.5022

chris.lipscomb@transwestern.com

Hanna Henley

214.292.6428

hanna.henley@transwestern.com

The information provided herein was obtained from sources believed reliable; however, Transwestern makes no guarantees, warranties or representations as to the completeness of accuracy thereof. The presentation of this property is submitted subject to errors, omissions, change of price or conditions, prior to sale or lease, or withdrawal without notice. Copyright © 2021 Transwestern.



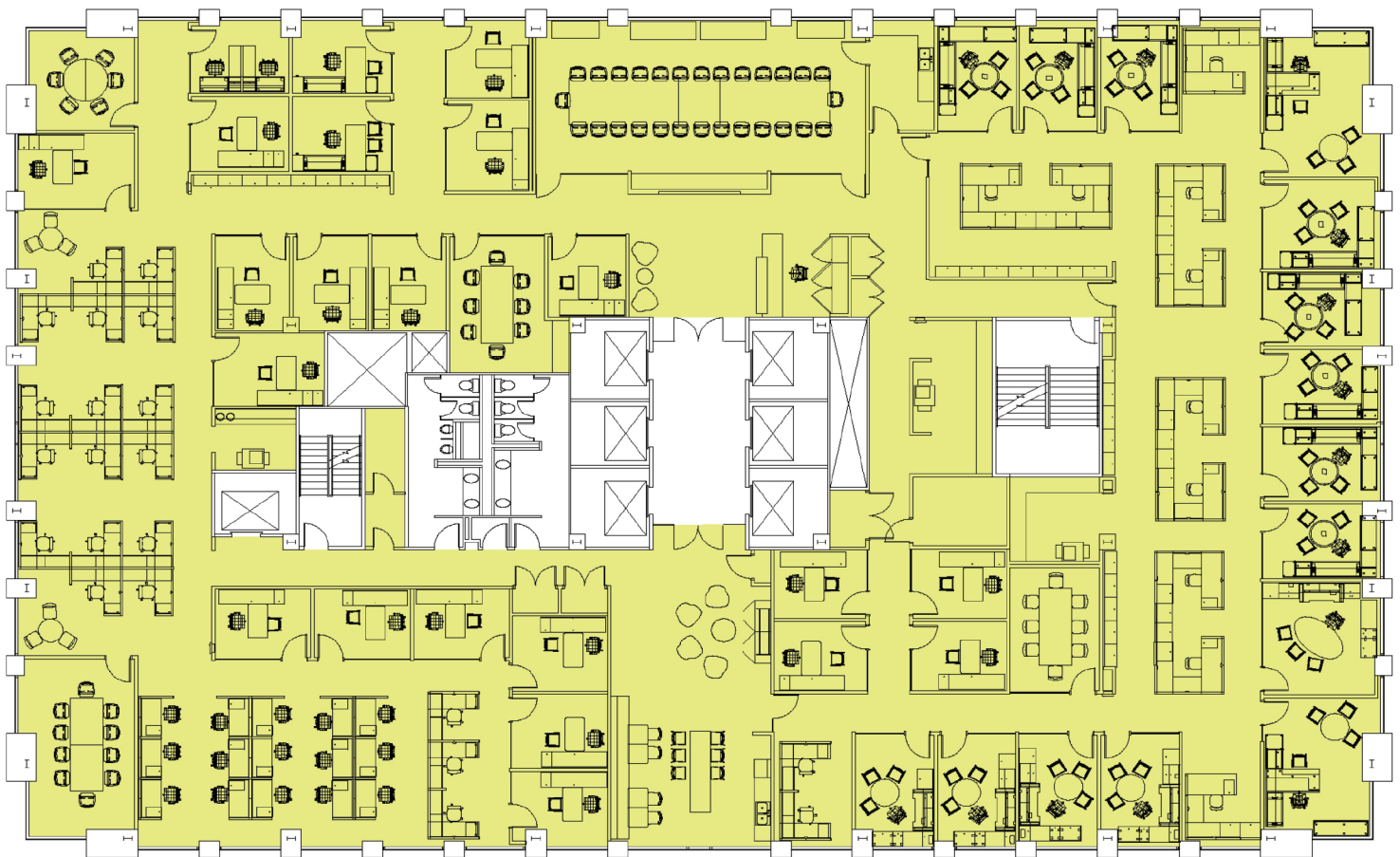
TRANSWESTERN

REAL ESTATE
SERVICES

EIGHTY-EIGHTY CENTRAL

8080 North Central Expressway - Dallas, Texas 75206

Seventh Floor - 17,988 RSF



Leasing Information:

Chris Lipscomb

214.237.5022

chris.lipscomb@transwestern.com

Hanna Henley

214.292.6428

hanna.henley@transwestern.com

The information provided herein was obtained from sources believed reliable; however, Transwestern makes no guarantees, warranties or representations as to the completeness of accuracy thereof. The presentation of this property is submitted subject to errors, omissions, change of price or conditions, prior to sale or lease, or withdrawal without notice. Copyright © 2021 Transwestern.



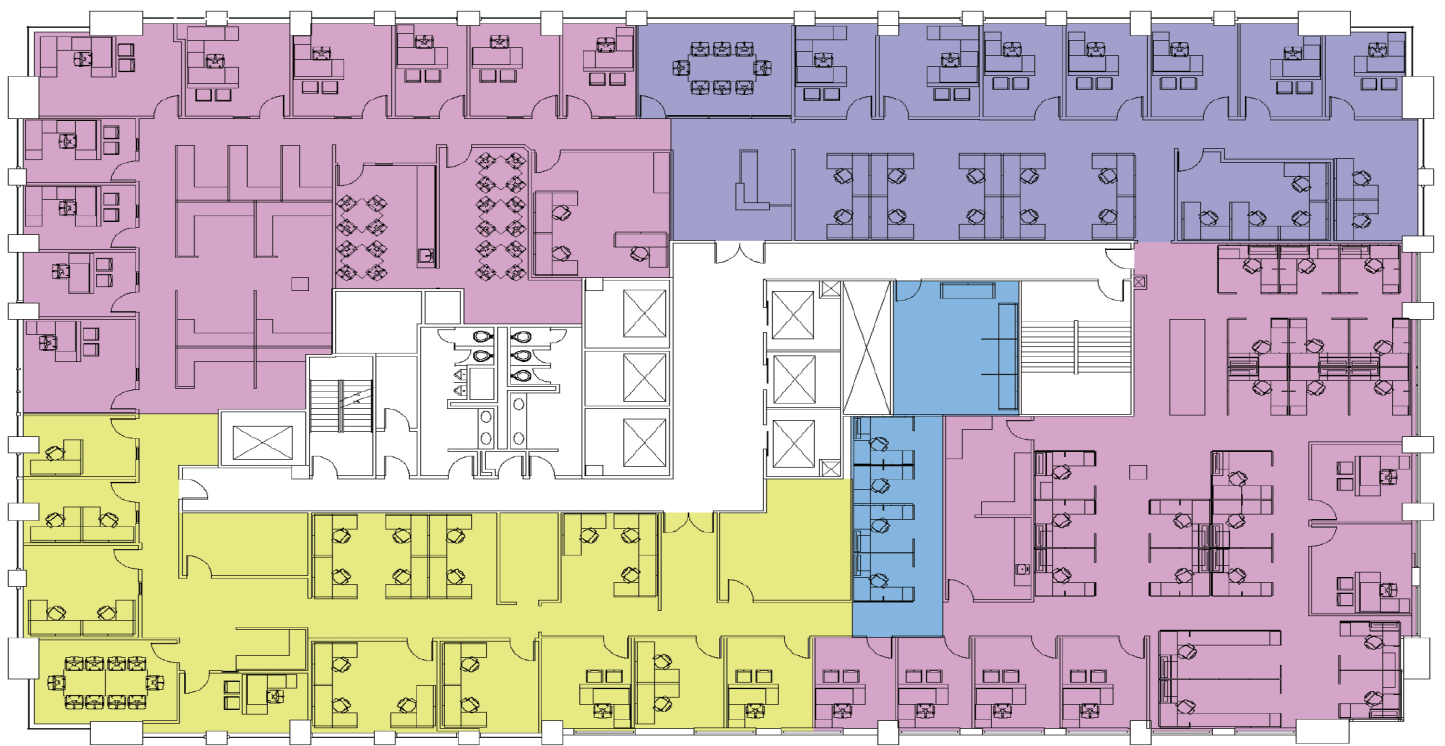
TRANSWESTERN

REAL ESTATE
SERVICES

EIGHTY-EIGHTY CENTRAL

8080 North Central Expressway - Dallas, Texas 75206

Eighth Floor - 17,287 RSF



Leasing Information:

Chris Lipscomb

214.237.5022

chris.lipscomb@transwestern.com

Hanna Henley

214.292.6428

hanna.henley@transwestern.com

The information provided herein was obtained from sources believed reliable; however, Transwestern makes no guarantees, warranties or representations as to the completeness of accuracy thereof. The presentation of this property is submitted subject to errors, omissions, change of price or conditions, prior to sale or lease, or withdrawal without notice. Copyright © 2021 Transwestern.



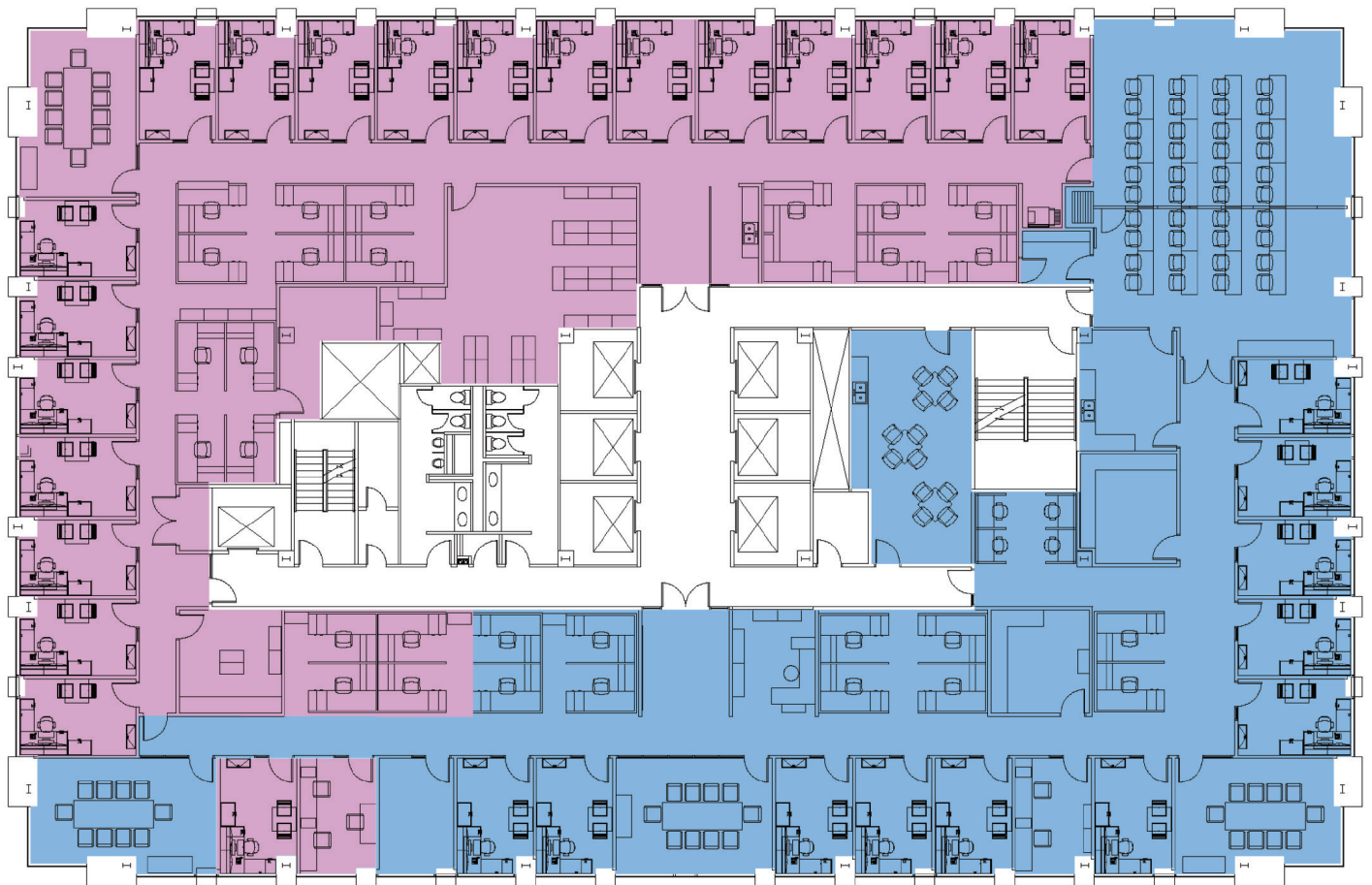
TRANSWESTERN

REAL ESTATE
SERVICES

EIGHTY-EIGHTY CENTRAL

8080 North Central Expressway - Dallas, Texas 75206

Ninth Floor - 17,862 RSF



Leasing Information:

Chris Lipscomb

214.237.5022

chris.lipscomb@transwestern.com

Hanna Henley

214.292.6428

hanna.henley@transwestern.com

The information provided herein was obtained from sources believed reliable; however, Transwestern makes no guarantees, warranties or representations as to the completeness of accuracy thereof. The presentation of this property is submitted subject to errors, omissions, change of price or conditions, prior to sale or lease, or withdrawal without notice. Copyright © 2021 Transwestern.



TRANSWESTERN

REAL ESTATE
SERVICES

EIGHTY-EIGHTY CENTRAL

8080 North Central Expressway - Dallas, Texas 75206

Tenth Floor - 13,054 RSF



Leasing Information:

Chris Lipscomb

214.237.5022

chris.lipscomb@transwestern.com

Hanna Henley

214.292.6428

hanna.henley@transwestern.com

The information provided herein was obtained from sources believed reliable; however, Transwestern makes no guarantees, warranties or representations as to the completeness of accuracy thereof. The presentation of this property is submitted subject to errors, omissions, change of price or conditions, prior to sale or lease, or withdrawal without notice. Copyright © 2021 Transwestern.



TRANSWESTERN

REAL ESTATE
SERVICES

EIGHTY-EIGHTY CENTRAL

8080 North Central Expressway - Dallas, Texas 75206

Thirteenth Floor - 3,765 RSF



Leasing Information:

Chris Lipscomb

214.237.5022

chris.lipscomb@transwestern.com

Hanna Henley

214.292.6428

hanna.henley@transwestern.com

The information provided herein was obtained from sources believed reliable; however, Transwestern makes no guarantees, warranties or representations as to the completeness of accuracy thereof. The presentation of this property is submitted subject to errors, omissions, change of price or conditions, prior to sale or lease, or withdrawal without notice. Copyright © 2021 Transwestern.



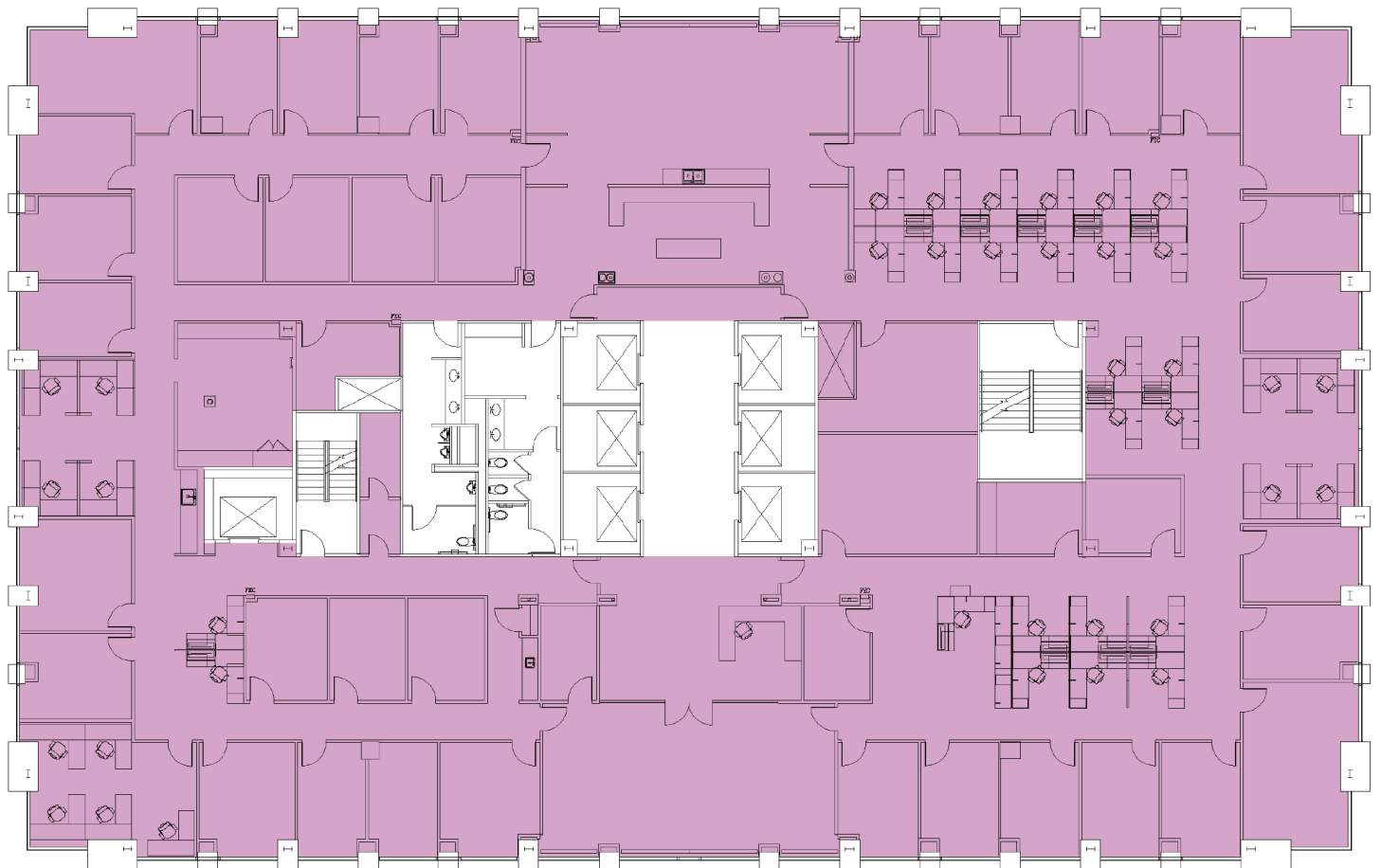
TRANSWESTERN

REAL ESTATE
SERVICES

EIGHTY-EIGHTY CENTRAL

8080 North Central Expressway - Dallas, Texas 75206

Seventeenth Floor - 18,016 RSF



Leasing Information:

Chris Lipscomb

214.237.5022

chris.lipscomb@transwestern.com

Hanna Henley

214.292.6428

hanna.henley@transwestern.com

The information provided herein was obtained from sources believed reliable; however, Transwestern makes no guarantees, warranties or representations as to the completeness of accuracy thereof. The presentation of this property is submitted subject to errors, omissions, change of price or conditions, prior to sale or lease, or withdrawal without notice. Copyright © 2021 Transwestern.