

# 950 N POINT PKWY

950 North Point Pkwy. Alpharetta, GA 30005

## SOUTHEAST HEALTHCARE ADVISORY SERVICES

### STEVE HALL

Senior Managing Director,  
Healthcare Advisory Services  
404.842.6560  
steve.hall@transwestern.com

### JOHN V. LOPEZ, CCIM, RPA

Managing Director,  
Healthcare Advisory Services  
404.842.6562  
john.lopez@transwestern.com

### BO STUART

Vice President,  
Healthcare Advisory Services  
404.842.6556  
bo.stuart@transwestern.com

### MARSH HAZLEHURST

Senior Associate,  
Healthcare Advisory Services  
404.842.6574  
marsh.hazlehurst@transwestern.com



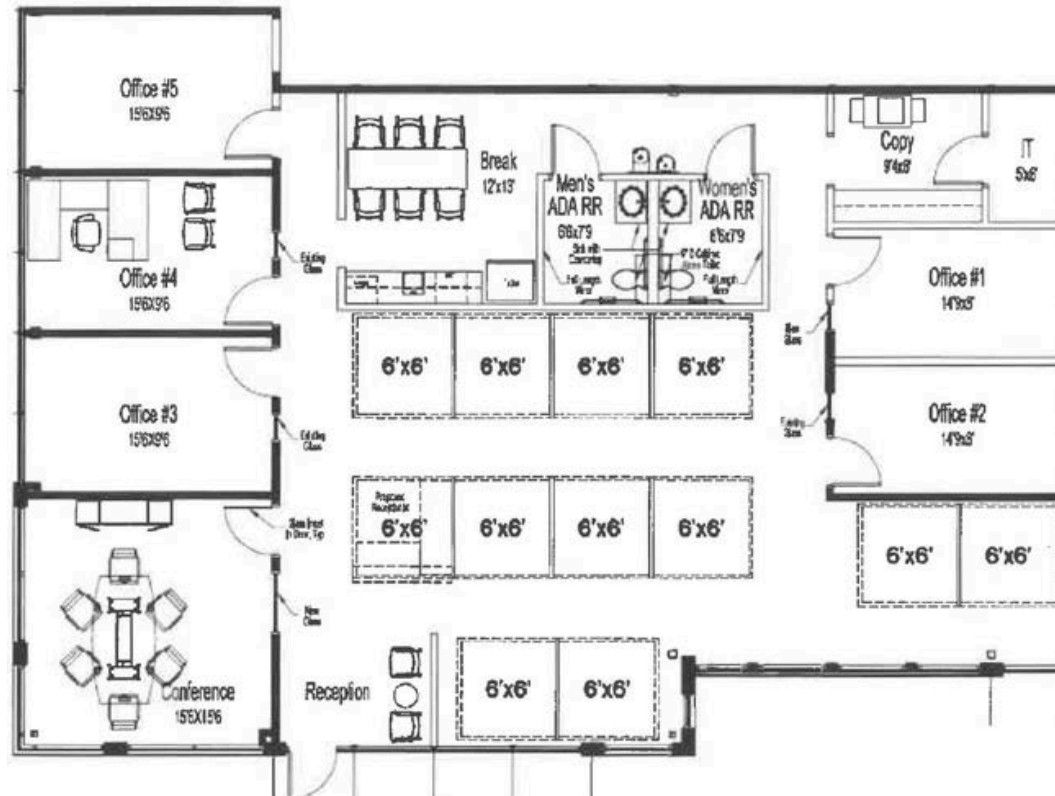


## AVAILABLE FLOORPLANS

**SUITE 150**  
1,688 RSF



# **SUITE 200** 3,235 RSF





## PROPERTY HIGHLIGHTS



Direct Access from  
Parking Lot



2.3 Miles from  
Northside Alpharetta  
Medical Campus



Highly Visible Suite Facing  
North Point Pkwy.

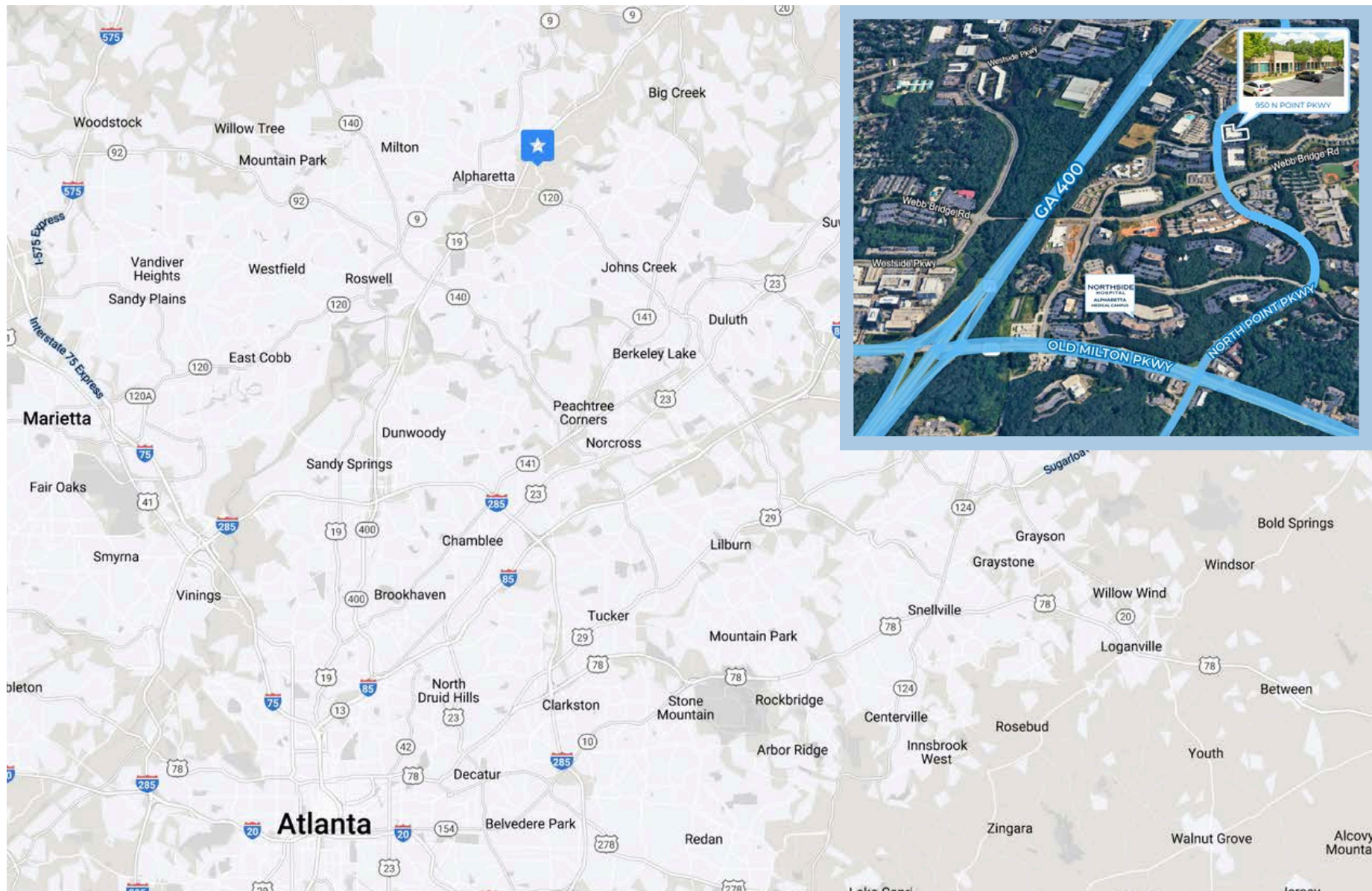


Building Built in 1995





# LOCATION MAP





# Let's do this.



## SOUTHEAST HEALTHCARE ADVISORY SERVICES

### STEVE HALL

Senior Managing Director,  
Healthcare Advisory Services

404.842.6560

[steve.hall@transwestern.com](mailto:steve.hall@transwestern.com)

### JOHN V. LOPEZ, CCIM, RPA

Managing Director,  
Healthcare Advisory Services

404.842.6562

[john.lopez@transwestern.com](mailto:john.lopez@transwestern.com)

### BO STUART

Vice President,  
Healthcare Advisory Services

404.842.6556

[bo.stuart@transwestern.com](mailto:bo.stuart@transwestern.com)

### MARSH HAZLEHURST

Senior Associate,  
Healthcare Advisory Services

404.842.6574

[marsh.hazlehurst@transwestern.com](mailto:marsh.hazlehurst@transwestern.com)