



TRANSWESTERN

REAL ESTATE  
SERVICES

**FOR SALE | OFFICE/MEDICAL BUILDING**

**1915 PLAZA DR | EAGAN, MN**



# PROPERTY OVERVIEW

## FOR SALE

### BUILDING INFORMATION

- × **Location:** 1915 Plaza Drive  
Eagan, MN
- × **Building Size:** 31,215 sq. ft.
- × **Lot Size:** 2.5 acres
- × **Zoning:** O: Office
- × **Year Built:** 2005
- × **Parking:** 120 surface  
31 underground

### AVAILABILITY

- × Suite 202 | 3,212 sq. ft.
- × Suite 100 | 15,493 sq. ft. (entire 1st floor)

### HIGHLIGHTS

- × Building exterior signage available
- × Great exposure + easy access to I-38E & Cliff Road
- × Located on highly visible intersection
- × Medical/Office building with ample surface and underground parking
- × Close proximity to restaurants, hotels and retail
- × Prominent first floor vacancy

### ASKING PRICE

- × Negotiable
- 2022 Real Estate Taxes
- × \$119,602



### LEASING INFORMATION:

**Chad Anvary** | 612.359.1642  
chad.anvary@transwestern.com

**Bryan Beltrand** | 612.359.1616  
bryan.beltrand@transwestern.com



# AREA AMENITIES

1915 Plaza Building



## LEASING INFORMATION:

**Chad Anvary** | 612.359.1642  
chad.anvary@transwestern.com

**Bryan Beltrand** | 612.359.1616  
bryan.beltrand@transwestern.com



**TRANSWESTERN**

REAL ESTATE  
SERVICES



# SITE SURVEY

1915 Plaza Building

## LEASING INFORMATION:

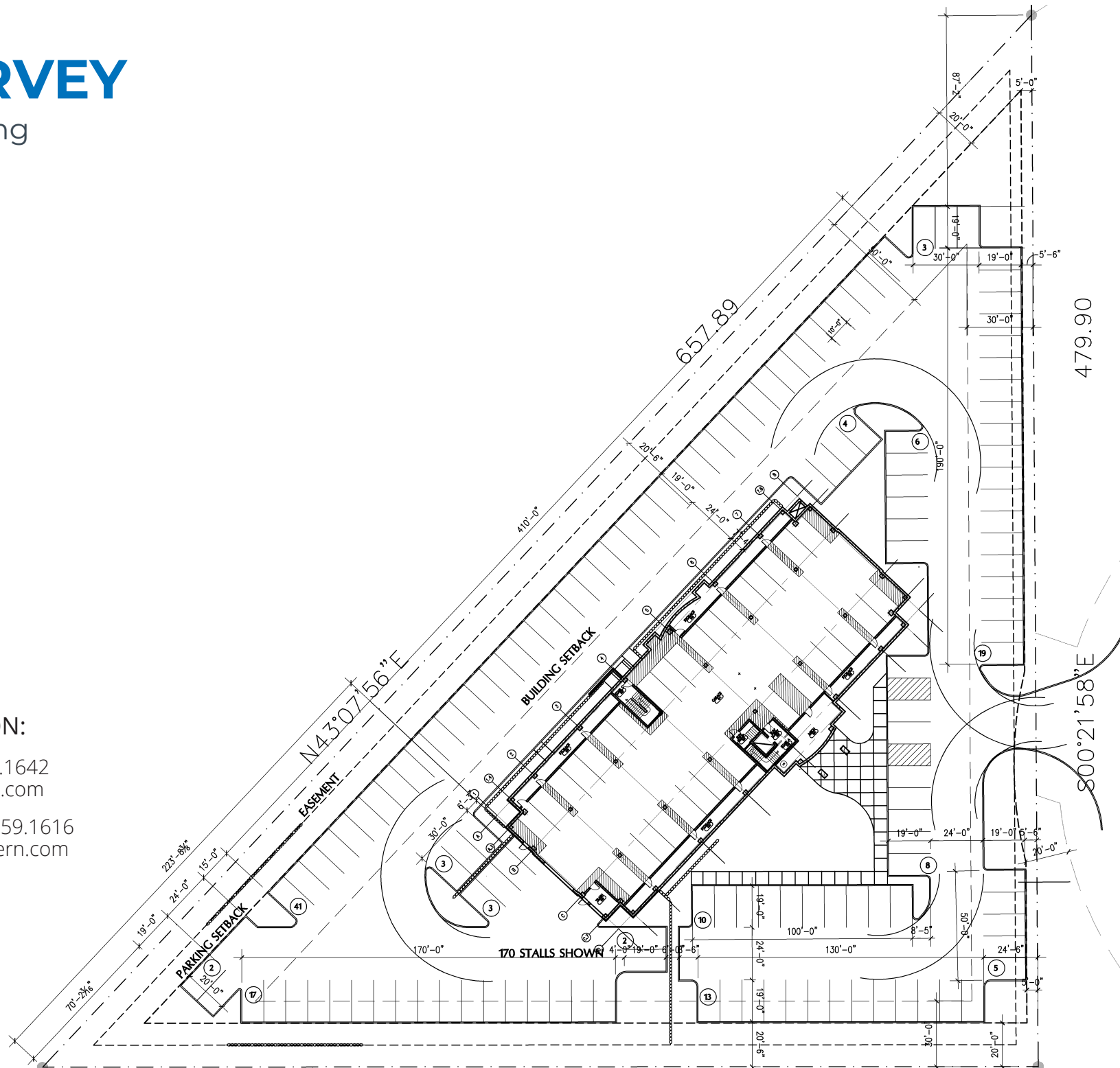
**Chad Anvary** | 612.359.1642  
chad.anvary@transwestern.com

**Bryan Beltrand** | 612.359.1616  
bryan.beltrand@transwestern.com



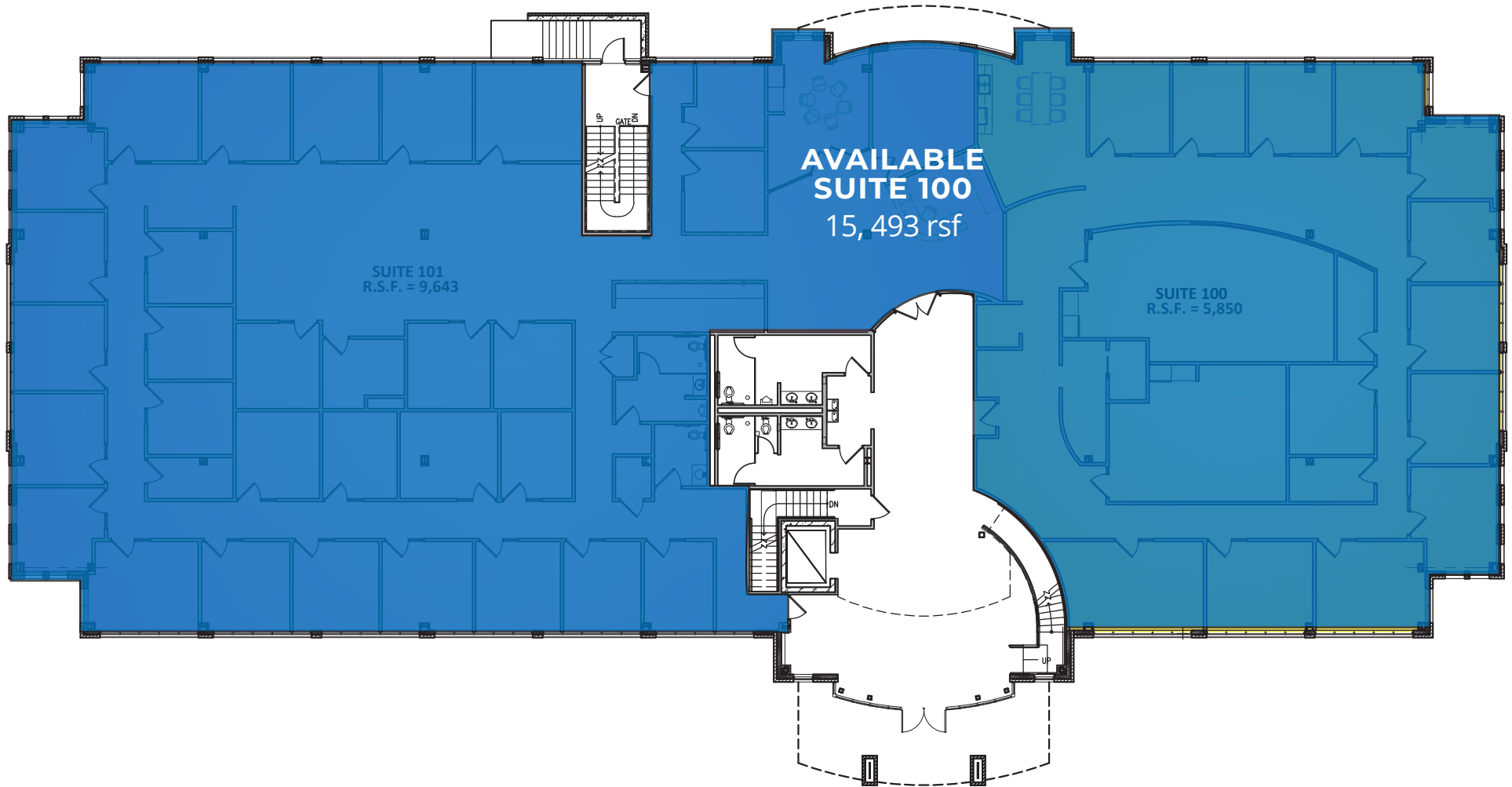
**TRANSWESTERN**

REAL ESTATE  
SERVICES



# 1<sup>ST</sup> FLOOR PLAN

1915 Plaza Building



## LEASING INFORMATION:

**Chad Anvary** | 612.359.1642  
chad.anvary@transwestern.com

**Bryan Beltrand** | 612.359.1616  
bryan.beltrand@transwestern.com

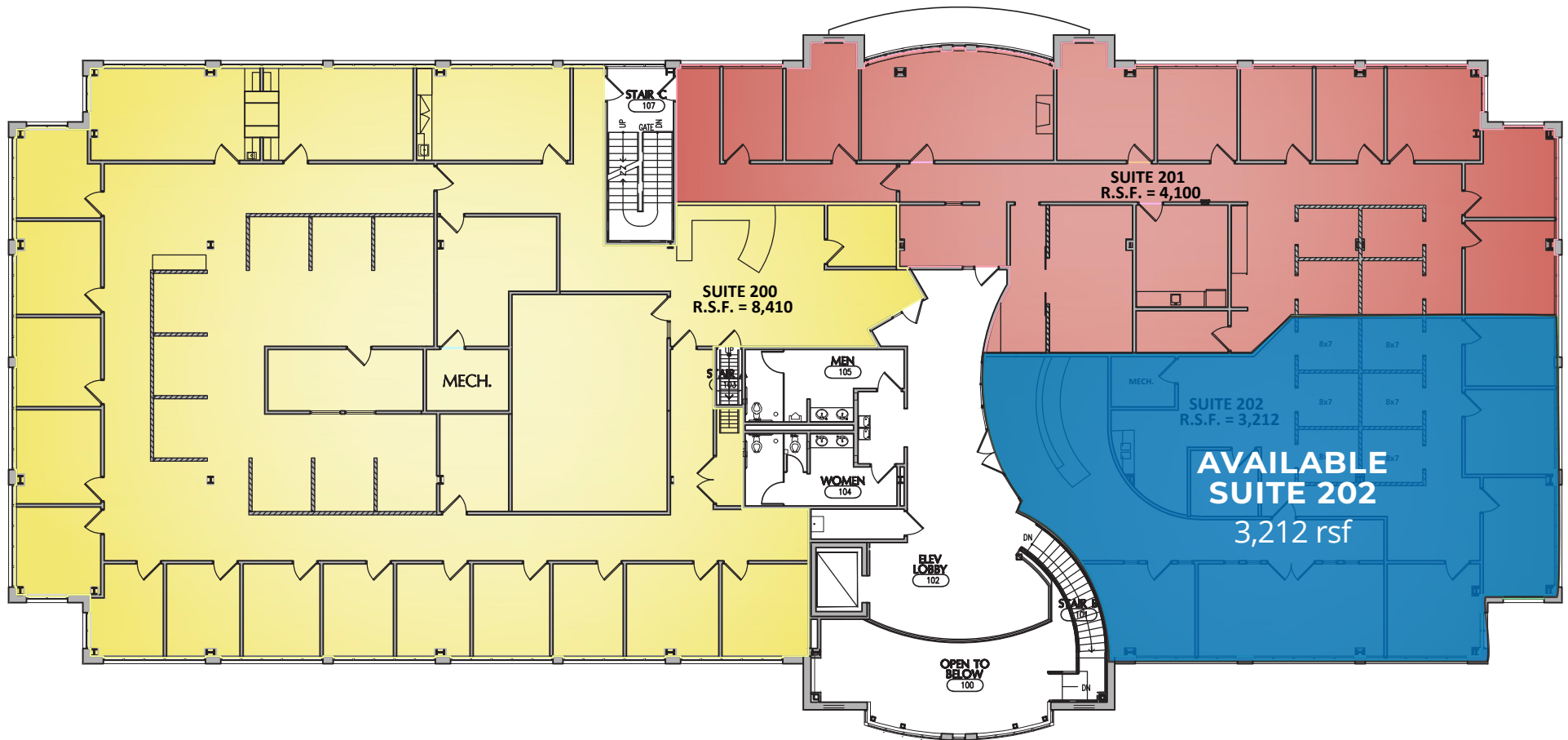


**TRANSWESTERN**

REAL ESTATE  
SERVICES

# 2<sup>ND</sup> FLOOR PLAN

1915 Plaza Building



## LEASING INFORMATION:

**Chad Anvary** | 612.359.1642  
chad.anvary@transwestern.com

**Bryan Beltrand** | 612.359.1616  
bryan.beltrand@transwestern.com

  
**TRANSWESTERN**

REAL ESTATE  
SERVICES

