

# 4501 NORTH POINT

4501 North Point Parkway,  
Alpharetta, GA 30022



TRANSWESTERN

REAL ESTATE  
SERVICES





# 4501 NORTH POINT

4501 North Point is a 130,378 SF class A office building located in the heart of the North Fulton submarket. 4501 North Point provides an attractive environment for your business as well as the unbeatable combination of easy access, prime location, local ownership and a competitive price. Featuring an elegant reception lobby with wood finishes, on-site security and 24/7 controlled access. The efficient 26,000-square-foot floorplates and the high parking ratio make 4501 North Point an ideal choice for high-density employers as well as professional firms.

Within a short drive are numerous restaurants, convenience stores, hotels, fitness centers, as well as the popular Avalon and North Point Mall offering abundant shopping and dining options. Also close by are the quaint boutiques and eateries found in downtown Alpharetta.

2 4501 NORTH POINT

## BUILDING HIGHLIGHTS



**4501 North Point Parkway, Alpharetta, GA**



**Quick and easy access to GA 400**



**5 minute drive to Avalon and North Point Mall with countless amenities**



**4.3/1000 parking ratio**



**Access to Big Creek Greenway**



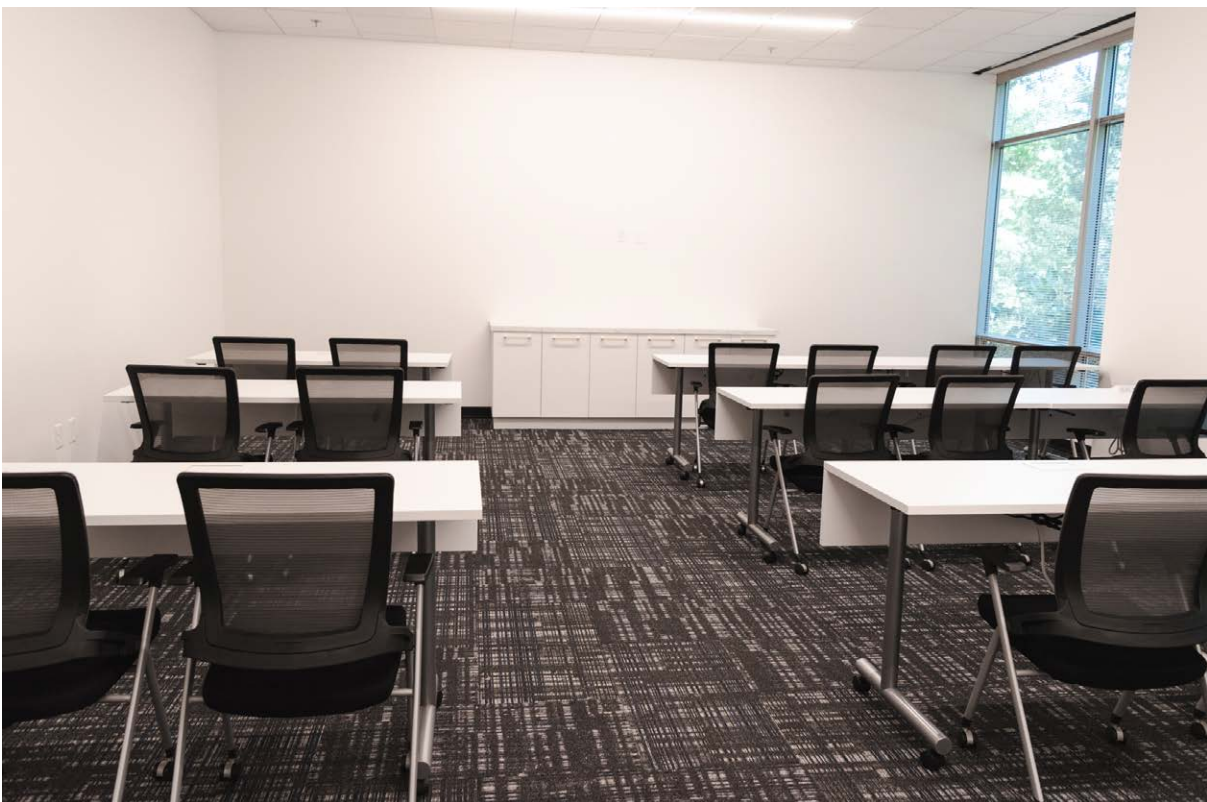
**Efficient floor plates**



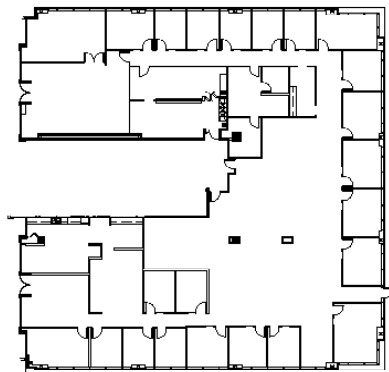
**Competitive Pricing**



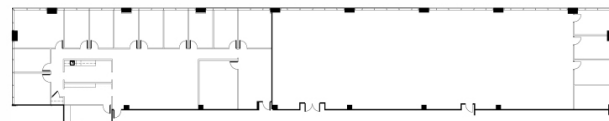
RECENTLY COMPLETED TENANT LOUNGE AND CONFERENCE FACILITY



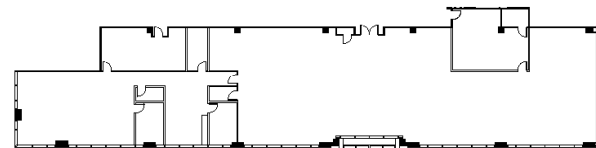
4501 NORTH POINT AVAILABILITIES



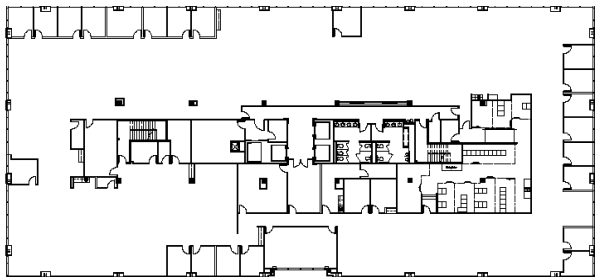
SUITE 100 - 11,983 RSF



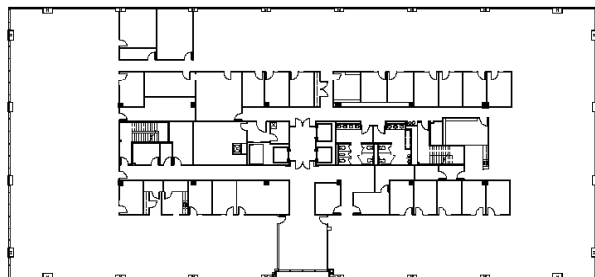
SUITE 200 - 10,699 RSF



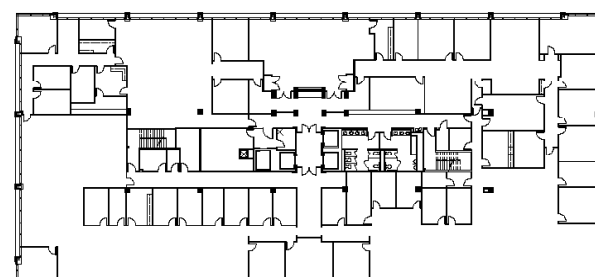
SUITE 250 - 9,303 RSF



3rd FLOOR - 26,938 RSF



4th FLOOR - 29,750 RSF



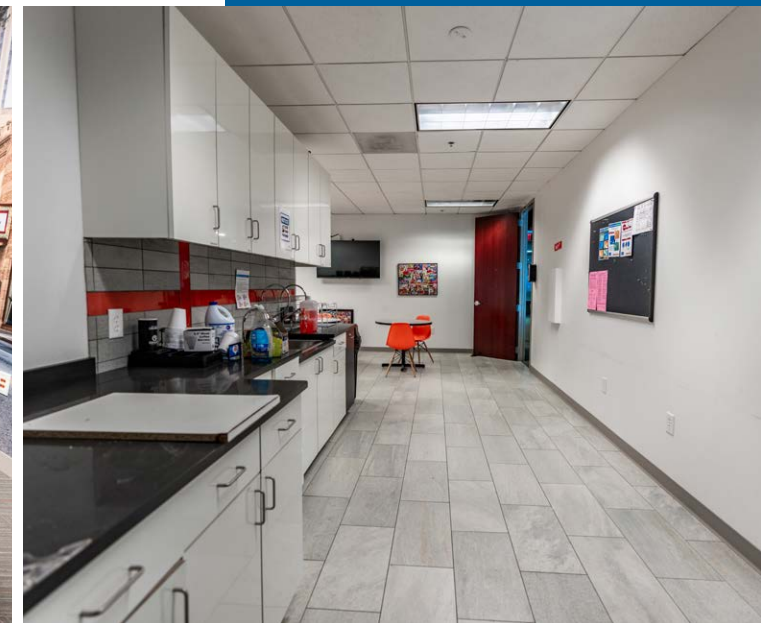
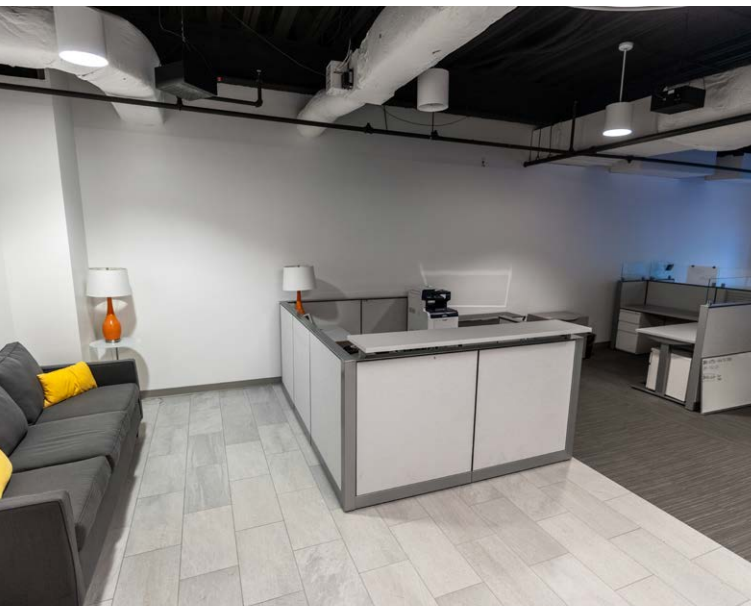
5th FLOOR - 29,751 RSF

BIG BLOCK AVAILABLE  
106,970 SF



FULLY FURNISHED READY TO MOVE IN SUITE AVAILABLE

SUITE 200





**NEARBY AMENITIES**  
Hundreds of nearby amenities including restaurants, hotels, entertainment, including Avalon and North Point Mall within a 5 minute drive.

**NORTH POINT MALL**

FAMOUS footwear	MANDARIN EXPRESS	amc
DQ	Häagen-Dazs	AT&T
H&M	KAY JEWELERS	Sarku Japan
JCPenney	The Cheesecake Factory	Chick-fil-A
FOREVER 21	Dillard's	McDonald's
SUBWAY	macys	Starbucks
SEPHORA	sunglass hut	

**4501 NORTH POINT**

**AVALON**

GAP	ATHLETA	Crate&Barrel
CHANEL	BANANA REPUBLIC	CRÚ FOOD & WINE BAR
WHOLE FOODS MARKET	Brooks Brothers	OAK STEAKHOUSE
Red's MONTANA GRILL	PNC BANK	lululemon
west elm	KENDRA SCOTT	J.CREW
ANTHROPOLOGIE	WILLIAMS-SONOMA	THE WOODHOUSE day spa
ANTICA	BONOBOS	CAFE INTERMEZZO
BOCADO BURGER	Chick-fil-A	South City KITCHEN
Levi's	Superica	
jen's	The Container Store	Apple
Starbucks	True Food kitchen	PAPER SOURCE
PETER MILLAR	SEPHORA	GOLDBERG'S
drybar	POTTERY BARN	REGAL CINEMAS





**GREG FRANKUM**

404.842.6565

[greg.frankum@transwestern.com](mailto:greg.frankum@transwestern.com)

**MATT SPICKARD**

404.842.6566

[matt.spickard@transwestern.com](mailto:matt.spickard@transwestern.com)

