

OFFICE SPACE FOR SUBLEASE

216 16TH STREET

Denver, CO 80202



TRANSWESTERN

REAL ESTATE
SERVICES

AVAILABILITIES

Suite 1500

12,220 SF

Possession: Immediate

Rent

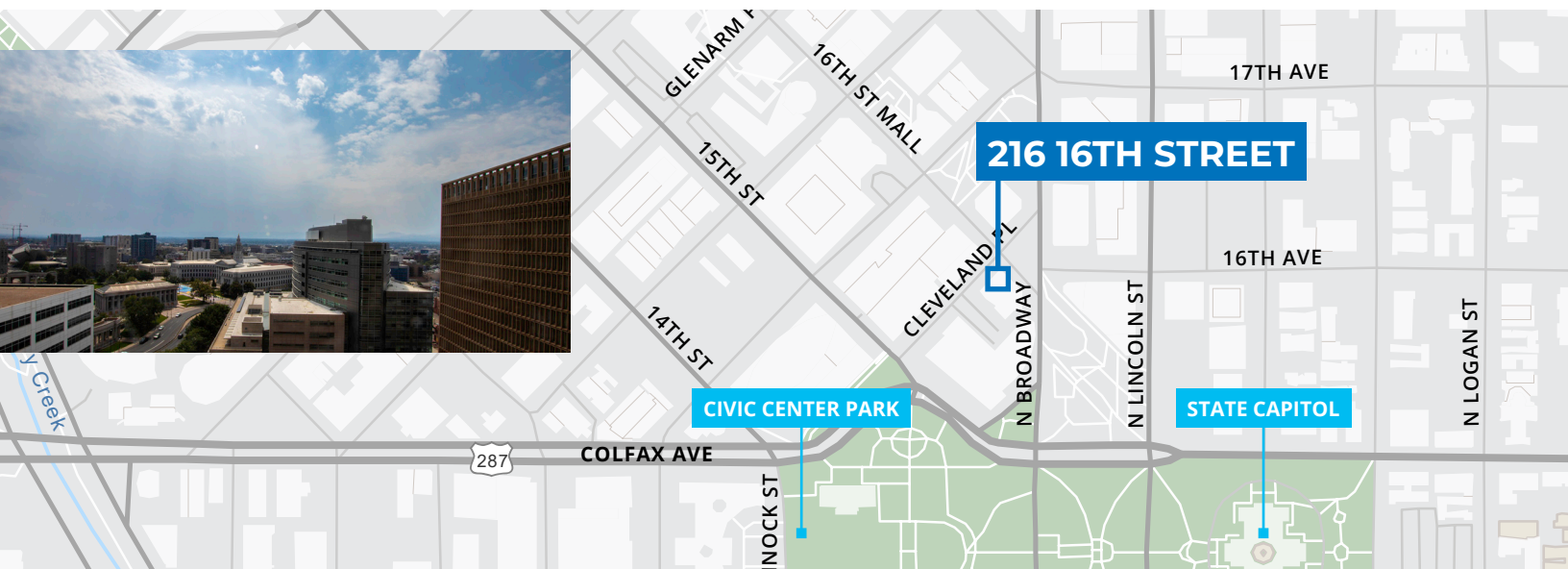
Negotiable

Term

Thru October 31, 2023

Comments

- Plug and play
- Fantastic high-rise views of the capitol building and Civic Center Park
- Located on 16th Street Mall with plenty of walkable amenities



LEASING INFORMATION

**Karen
Clarke**

303.407.1463

karen.clarke@transwestern.com

**Cheryl
Casserly**

720.372.4057

cheryl.casserly@transwestern.com

**Jack
Ellis**

303.952.5590

jack.ellis@transwestern.com

5251 DTC Parkway | Suite 1100

Greenwood Village, CO 80111

T 303.639.3000

www.transwestern.com

OFFICE SPACE FOR SUBLEASE

216 16TH STREET

Denver, CO 80202

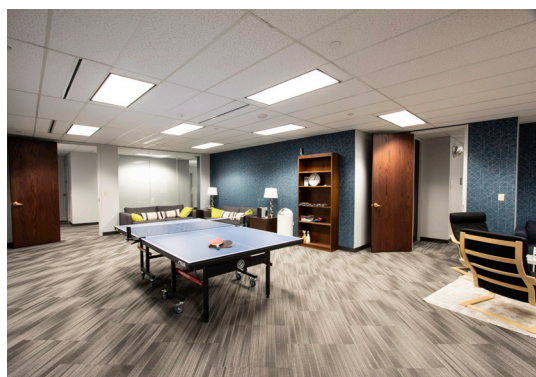
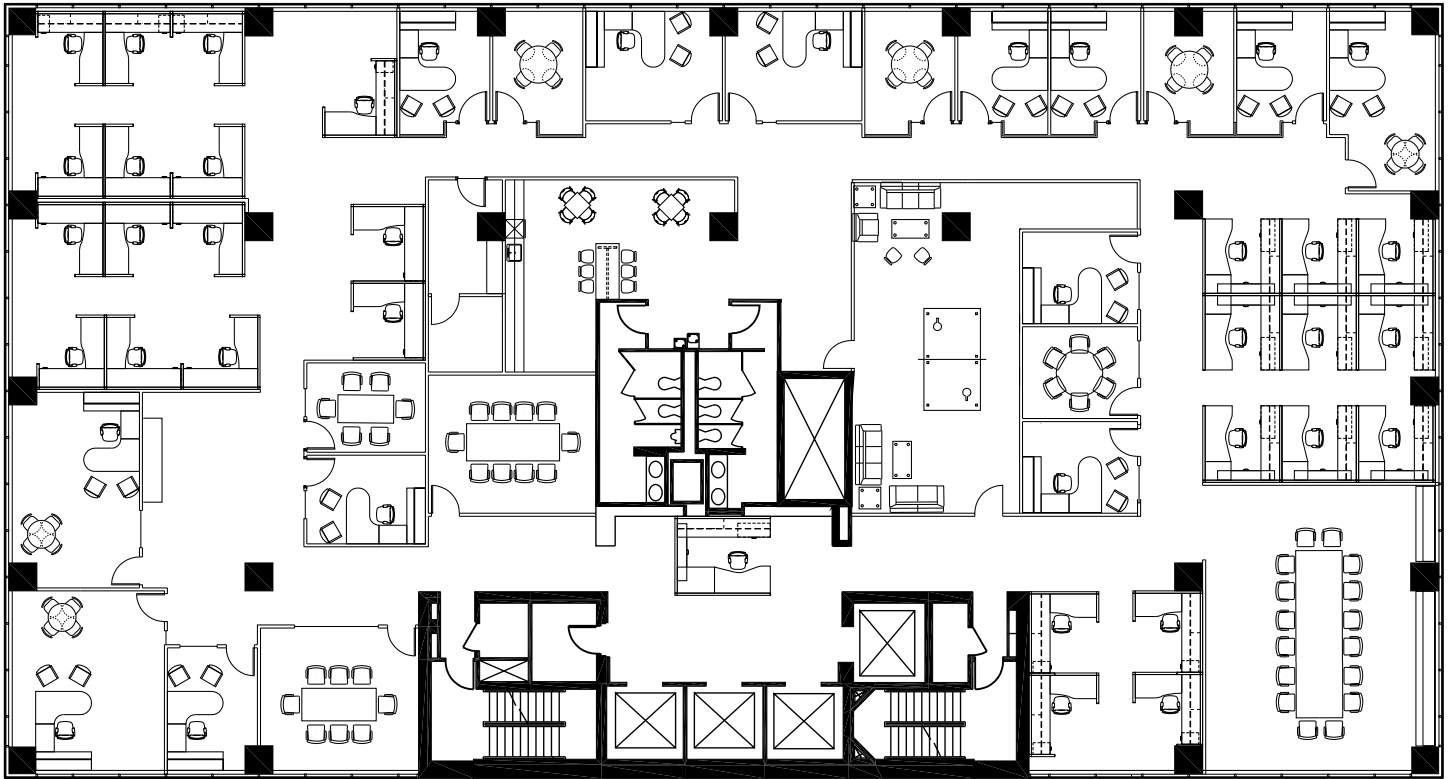


TRANSWESTERN

REAL ESTATE
SERVICES

SUITE 1500

12,220 SF



LEASING INFORMATION

**Karen
Clarke**

303.407.1463

karen.clarke@transwestern.com

**Cheryl
Casserly**

720.372.4057

cheryl.casserly@transwestern.com

**Jack
Ellis**

303.952.5590

jack.ellis@transwestern.com

5251 DTC Parkway | Suite 1100

Greenwood Village, CO 80111

T 303.639.3000

www.transwestern.com

The information provided herein was obtained from sources believed reliable; however, Transwestern makes no guarantees, warranties or representations as to the completeness of accuracy thereof. The presentation of this property is submitted subject to errors, omissions, change of price or conditions, prior to sale or lease, or withdrawal without notice. Copyright © 2021 Transwestern.