

# FREESTANDING BUILDING IN CARTER INDUSTRIAL PARK



# 1200 EVERMAN PKWY

FORT WORTH, TX 76140

## INDUSTRIAL SPACE FOR LEASE

**18,266**  
SF AVAILABLE

**5,100**  
SF OFFICE

**NEW ROOF, HVAC,  
PAINT & CARPET**

**MOVE-IN  
READY**

- + 18,266 SF Total
- + 5,100 SF Office
- + Situated on 1.53 Acres
- + Grade Level Loading
- + Two (2) 10x12' Overhead Door
- + 30 Parking Spaces
- + Prominent Corner Location with Excellent Access to I-35W
- + Fully Renovated Office Space, Move-In Ready
- + \$7.95 PSF/NNN



**TODD HAWPE**

Principal

(817) 259-3523

todd.hawpe@transwestern.com

**JEFF GIVENS**

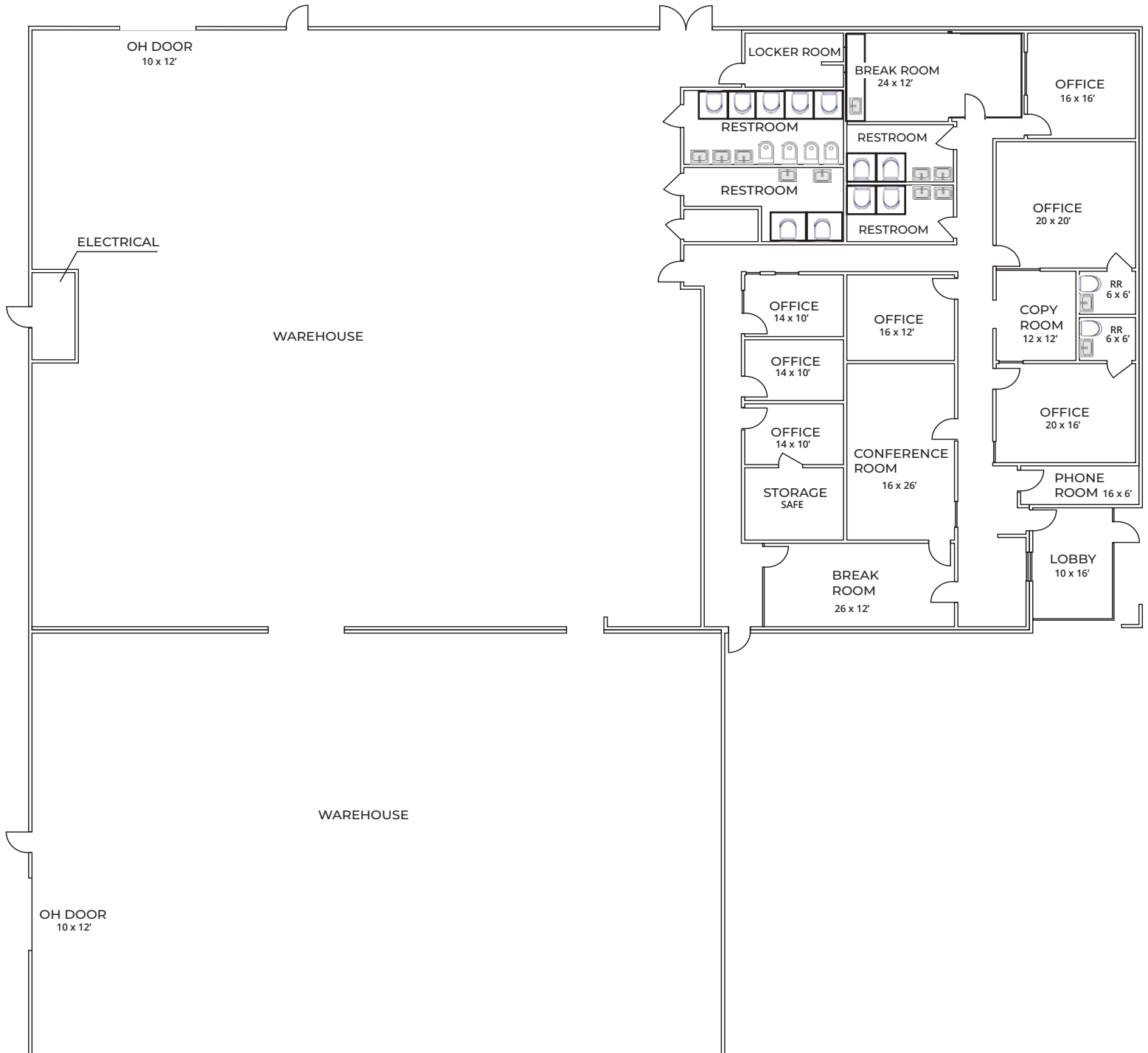
Principal

(817) 259-3536

jeff.givens@transwestern.com

# 1200 EVERMAN PKWY

## FLOOR PLAN



**TODD HAWPE**

Principal

(817) 259-3523

todd.hawpe@transwestern.com

**JEFF GIVENS**

Principal

(817) 259-3536

jeff.givens@transwestern.com



# 1200 EVERMAN PKWY - SITE AERIAL



**TODD HAWPE**

Principal

(817) 259-3523

[todd.hawpe@transwestern.com](mailto:todd.hawpe@transwestern.com)

**JEFF GIVENS**

Principal

(817) 259-3536

[jeff.givens@transwestern.com](mailto:jeff.givens@transwestern.com)