

CLAYMOORE  
BUSINESS PARK  
3600

KNOX'S DISTRIBUTION, INC  
TEC SALES/CHALFANT  
REPUBLIC FLOOR  
ENTER CORP

LOVETT  
INDUSTRIAL

26,550 SF  
FOR LEASE | CLASS A  
WAREHOUSE SPACE

CLAYMOORE  
BUSINESS PARK



# CLAYMOORE

BUSINESS PARK

26,550 SF WITH 1,160 SF OF OFFICE  
3600 BRITTMOORE RD | SUITE 120 | HOUSTON, TX 77043

THE GALLERIA



KATY FREEWAY

MEMORIAL CITY

BELTWAY  
8

W. SAM HOUSTON PKWY N.

10801 MOSS RIDGE RD

3550 BRITTMOORE RD

3700 CLAYMOORE PARK DR

3900 CLAYMOORE PARK DR

11555 CLAY RD

11711 CLAY RD

26,550 SF AVAILABLE

3600 BRITTMOORE RD  
SUITE 120

3800 BRITTMOORE RD

CLAYMOORE PARKWAY DR

CLAY ROAD

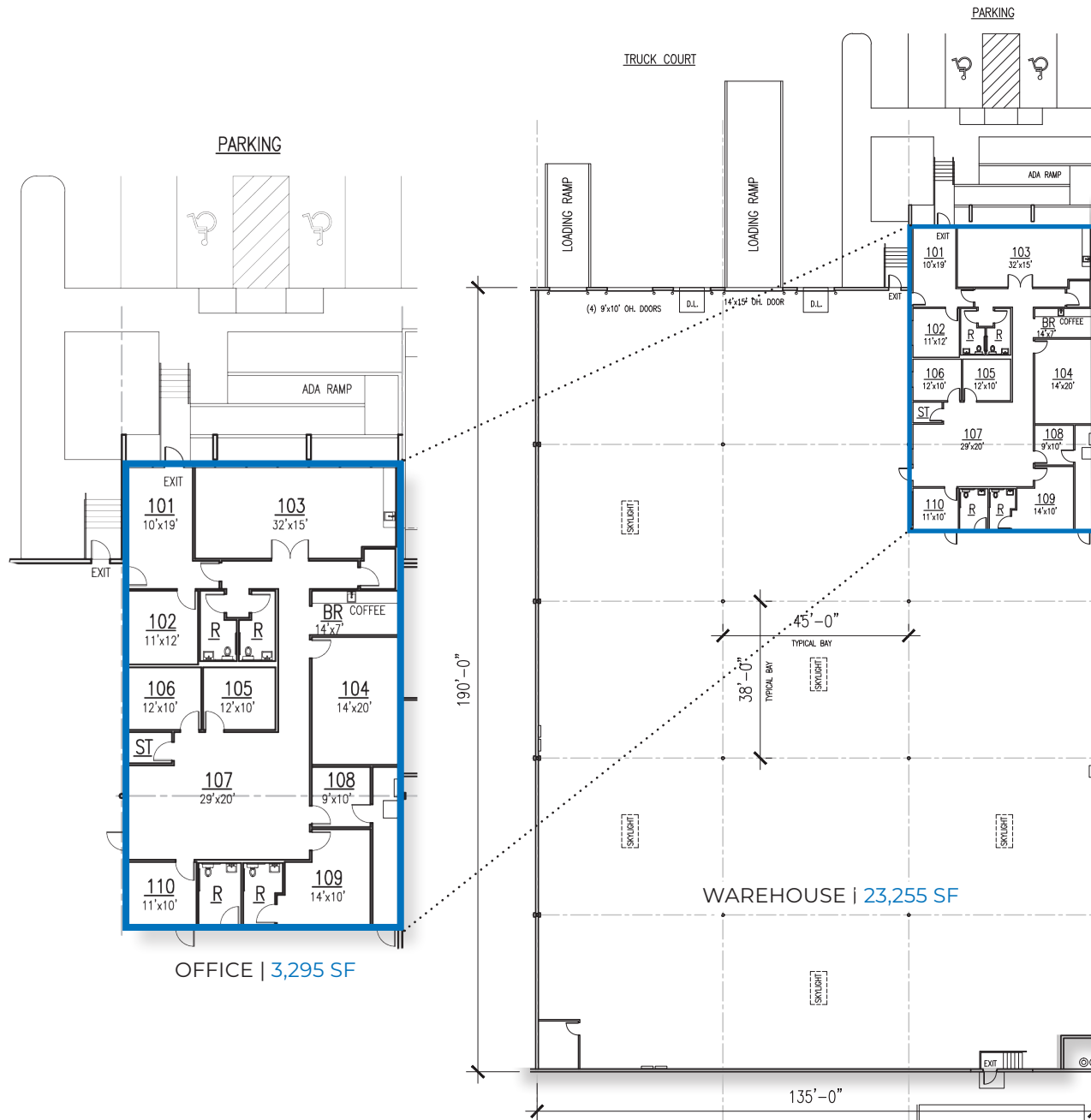
BRITTMOORE ROAD

KEMPWOOD

## AERIAL MAP

- Master-planned park with excellent accessibility
- Strategically located on Brittmoore Rd. just off Clay Rd. and Beltway 8
- Outstanding corporate identity
- Irreplaceable infill location





# LOVETT

INDUSTRIAL

## SITE PLAN

### SPACE FEATURES:

- 26,550 SF Total
- 3,295 SF Office
- 23,255 SF Warehouse
- All concrete paving
- Professionally maintained landscaping
- Front load / Dock high
- 24' Clear height
- Two (2) dock high loading doors
- Two (2) drive-in ramps
- 190' Building depth
- Fully fire sprinklered
- Abundant car parks

# LOCAL AMENITIES

## RESTAURANTS

- 1 Pappas BBQ
- 2 Pappadeaux Seafood
- 3 James Coney Island
- 4 Rudy's Bar-BQ
- 5 Taco Cabana
- 6 McDonald's
- 7 Starbucks
- 8 Chick-Fil-A
- 9 Niko Niko'shen
- 10 Kirby Ice House

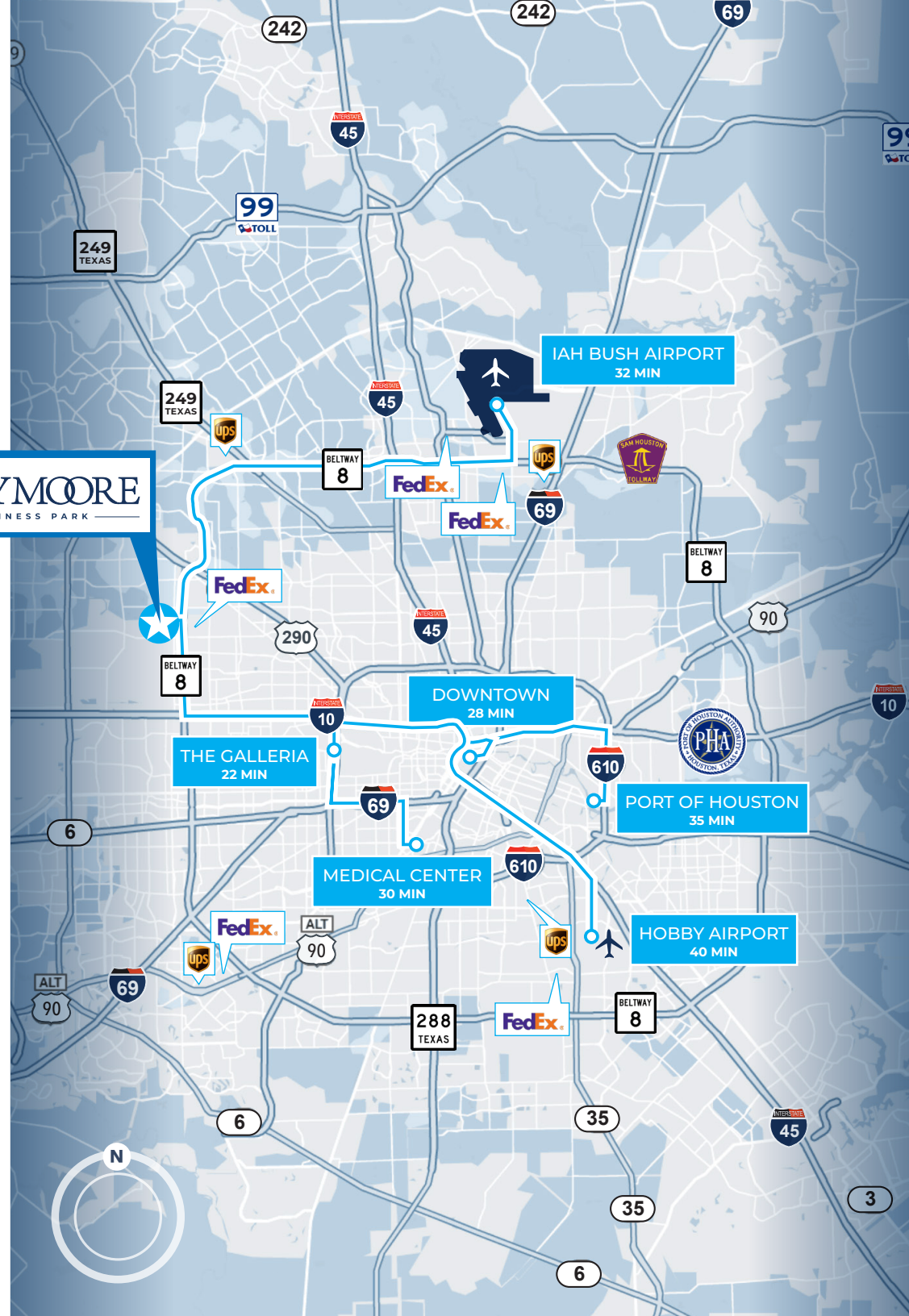
## HOTELS

- 11 Residence Inn by Marriott
- 12 Four Points by Sheraton
- 13 Comfort Suites
- 14 Staybridge Suites
- 15 The Westin Houston

## SERVICES/RETAIL

- 16 Clay Road YMCA
- 17 Memorial City Mall
- 18 Life Time Fitness
- 19 CITYCENTRE
- 20 Town & Country Village
- 21 FedEx

**CLAYMOORE**  
BUSINESS PARK





# LOVETT

## INDUSTRIAL



**TRANSWESTERN**

**LEASING INFORMATION:**

**Darryl Noon**

**P: 713.270.3325**

**E: Darryl.Noon@transwestern.com**

**Jude Filippone**

**P: 713.270.3318**

**E: Jude.Filippone@transwestern.com**

**Brian Gammill**

**P: 713.270.3321**

**E: Brian.Gammill@transwestern.com**

The information provided herein was obtained from sources believed reliable; however, Transwestern makes no guarantees, warranties or representations as to the completeness or accuracy thereof. The presentation of this property is submitted subject to errors, omissions, change of price or conditions, prior sale or lease, or withdrawal without notice. Copyright © 2023 Transwestern.