

**MEDICAL
OFFICE**

32,263
TOTAL SF

2,081 RSF
AVAILABLE



TRANSWESTERN

REAL ESTATE
SERVICES

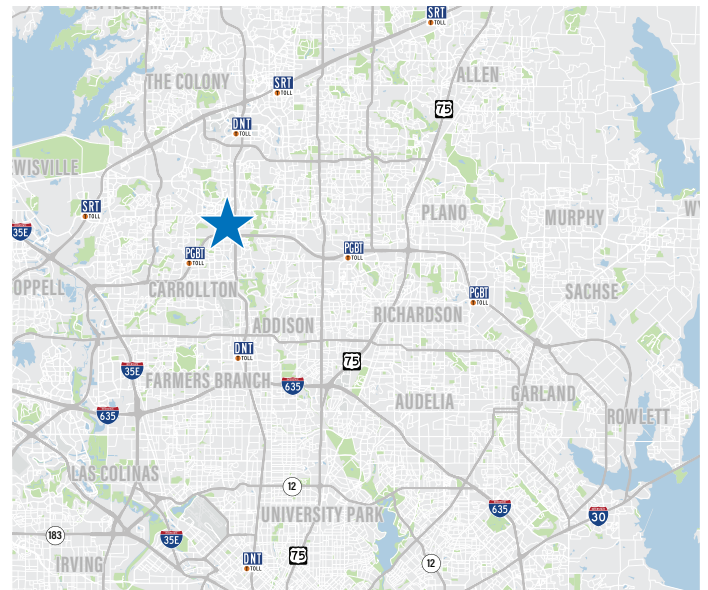
6101 W PLANO PARKWAY

Plano, Texas 75093



Building Information:

- Located near International Business Park
- Renovated in 2013
- 5/1000 RSF surface parking
- 11 covered parking spaces
- EV charging station
- Outdoor seating area
- Professionally managed
- 3-miles from Baylor Scott & White - Plano
- Easy access to Dallas North Tollway



Leasing Information:

Chris Lipscomb

214.237.5022

chris.lipscomb@transwestern.com

Elliott Newsom

972.361.1118

elliott.newson@transwestern.com

The information provided herein was obtained from sources believed reliable; however, Transwestern makes no guarantees, warranties or representations as to the completeness of accuracy thereof. The presentation of this property is submitted subject to errors, omissions, change of price or conditions, prior to sale or lease, or withdrawal without notice. Copyright © 2025 Transwestern.

6101 W PLANO PARKWAY

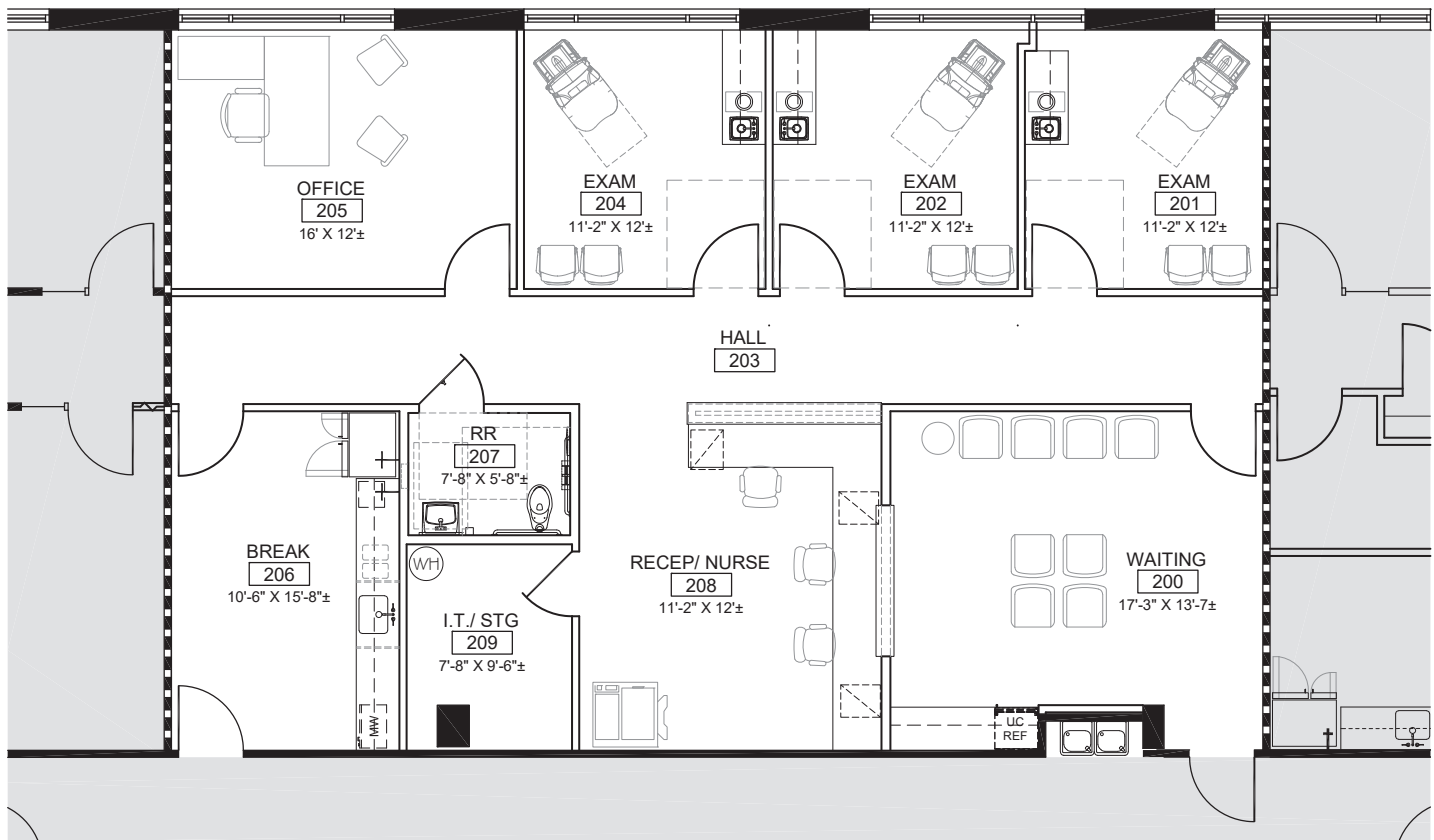
Plano, Texas 75093



TRANSWESTERN

REAL ESTATE
SERVICES

Suite 220 2,081 RSF



Concept Plan

Leasing Information:

Chris Lipscomb

214.237.5022

chris.lipscomb@transwestern.com

Elliott Newsom

972.361.1118

elliott.newson@transwestern.com

The information provided herein was obtained from sources believed reliable; however, Transwestern makes no guarantees, warranties or representations as to the completeness of accuracy thereof. The presentation of this property is submitted subject to errors, omissions, change of price or conditions, prior to sale or lease, or withdrawal without notice. Copyright © 2025 Transwestern.