

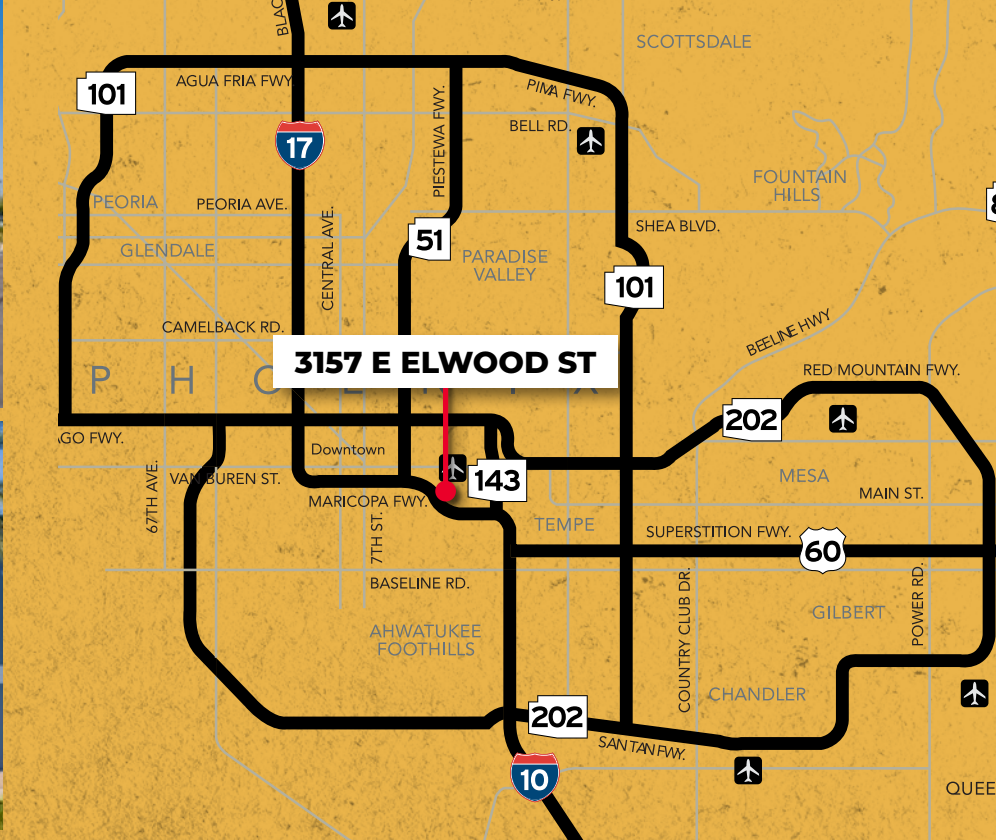
# 3157 EAST ELWOOD STREET

PHOENIX | AZ



- ±49,969 SF FOR LEASE / DIVISIBLE
- PLUG & PLAY OPPORTUNITY





## AMENITIES ±3 MILES

- 70 BANKS/ATM'S
- 8 COFFEE SHOPS
- 20 CONVENIENCE STORES
- 2 DEPARTMENT STORES
- 19 GROCERS/RETAIL
- 2 HEALTH CLUBS
- 33 HOTELS/MOTELS
- 13 PHARMACIES
- 152 RESTAURANTS
- 6 GAS SATALIONS
- 6 VARIETY STORES

**SKY HARBOR  
INTERNATIONAL AIRPORT**

**3157 E ELWOOD ST**

**E BROADWAY RD**

**E SOUTHERN RD**

**E BASELINE RD**

**S 165H ST**

**S 245H ST**

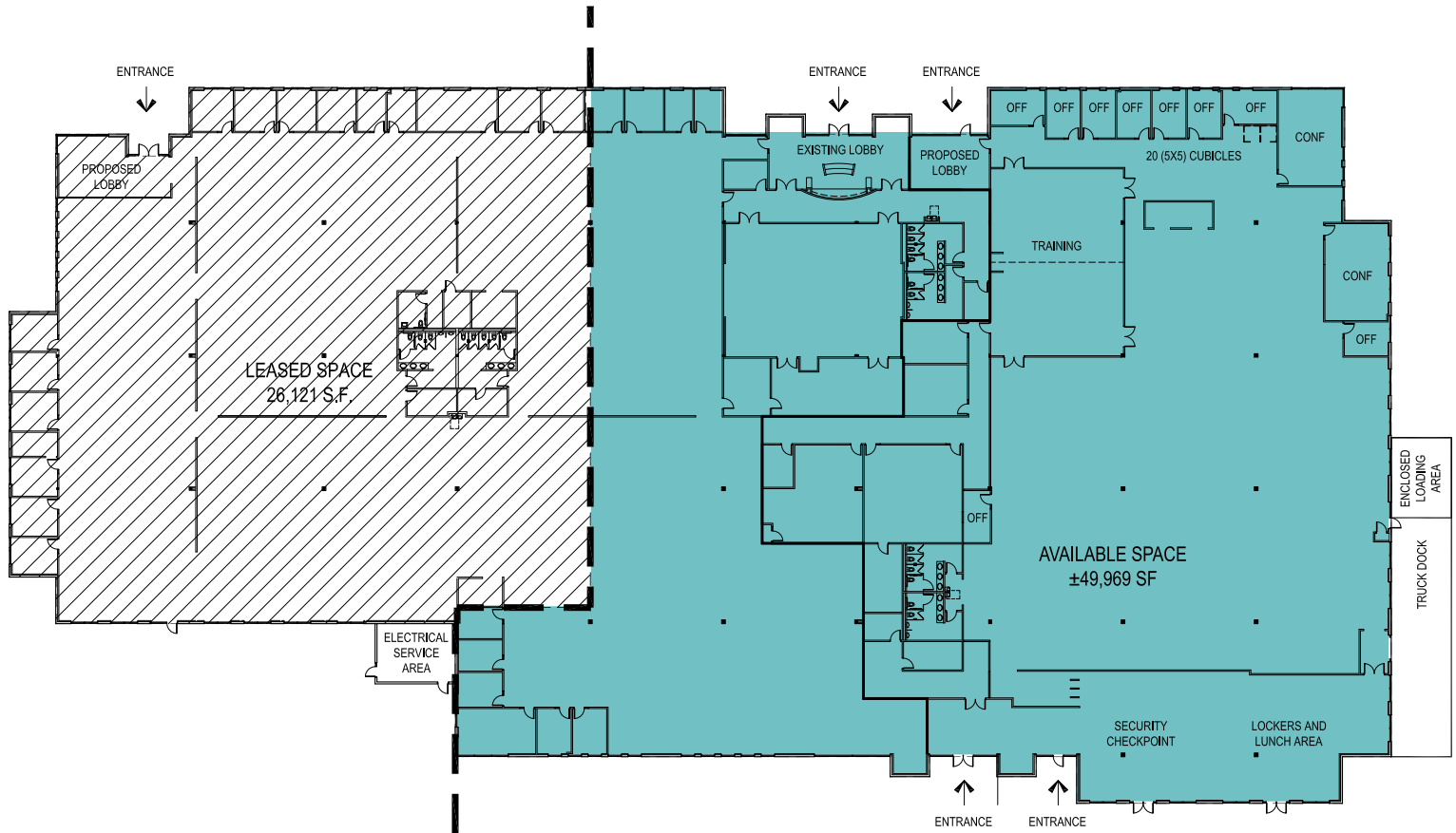
**S 32ND ST**

**S 40TH ST**

**S 48TH ST**



# FLOOR PLAN



## SPACE DETAILS:

- TWO (2) LARGE TRAINING ROOMS
- TWO (2) LARGE RESTROOM CORES
- LOCKER AREA
- LUNCH ROOM
- OUTSIDE SEATING/LUNCH AREA
- SECURITY CHECKPOINT AREA
- LARGE DATA ROOM
- TWO (2) BREAK ROOMS
- FOUR (4) CONFERENCE ROOMS
- ±335 EXISTING CUBICLES
- EIGHTEEN (18) OFFICES
- SIX (6) STORAGE ROOMS

## PARKING:

- ±6/1,000 SF

# 3157 EAST ELWOOD STREET

PHOENIX | AZ



**MARK STRATZ**

Senior Vice President 602 386 1186

[mark.stratz@transwestern.com](mailto:mark.stratz@transwestern.com)

**SCOTT BAUMGARTEN**

Senior Vice President 602 386 1187

[scott.baumgarten@transwestern.com](mailto:scott.baumgarten@transwestern.com)

**CONNOR MALONEY**

Senior Associate 602 281 3578

[connor.maloney@transwestern.com](mailto:connor.maloney@transwestern.com)



**TRANSWESTERN®**