

**WAREHOUSE
& OFFICE
SPACE FOR
LEASE**

13,407 SF
FOR LEASE

CLASS A
BUILDING

NORTHWEST
SUBMARKET



TRANSWESTERN

REAL ESTATE
SERVICES

PARK PLACE EIGHT

5353 West Sam Houston Parkway North, Suite 390 - Houston, TX 77041



Availability:

- 13,407 SF Total
- 9,760 SF Office space
- 3,647 SF Warehouse space

Building Amenities:

- Excellent Beltway visibility and access to Hwy 290, Beltway 8 and I-10
- Strong corporate identity provides a productive working environment
- Tilt-up concrete construction
- All concrete paving

Space Features:

- 19' Average clear height
- ADA Accessible
- Fully sprinklered
- Grade level loading / rear load
- Professional and extensive landscaping



Leasing Information:

Jude Filippone

Vice President
713.270.3318
jude.filippone@transwestern.com

Carter Thurmond

Senior Associate
713.490.3784
carter.thurmond@transwestern.com

Brian Gammill

Managing Director
713.270.3321
brian.gammill@transwestern.com

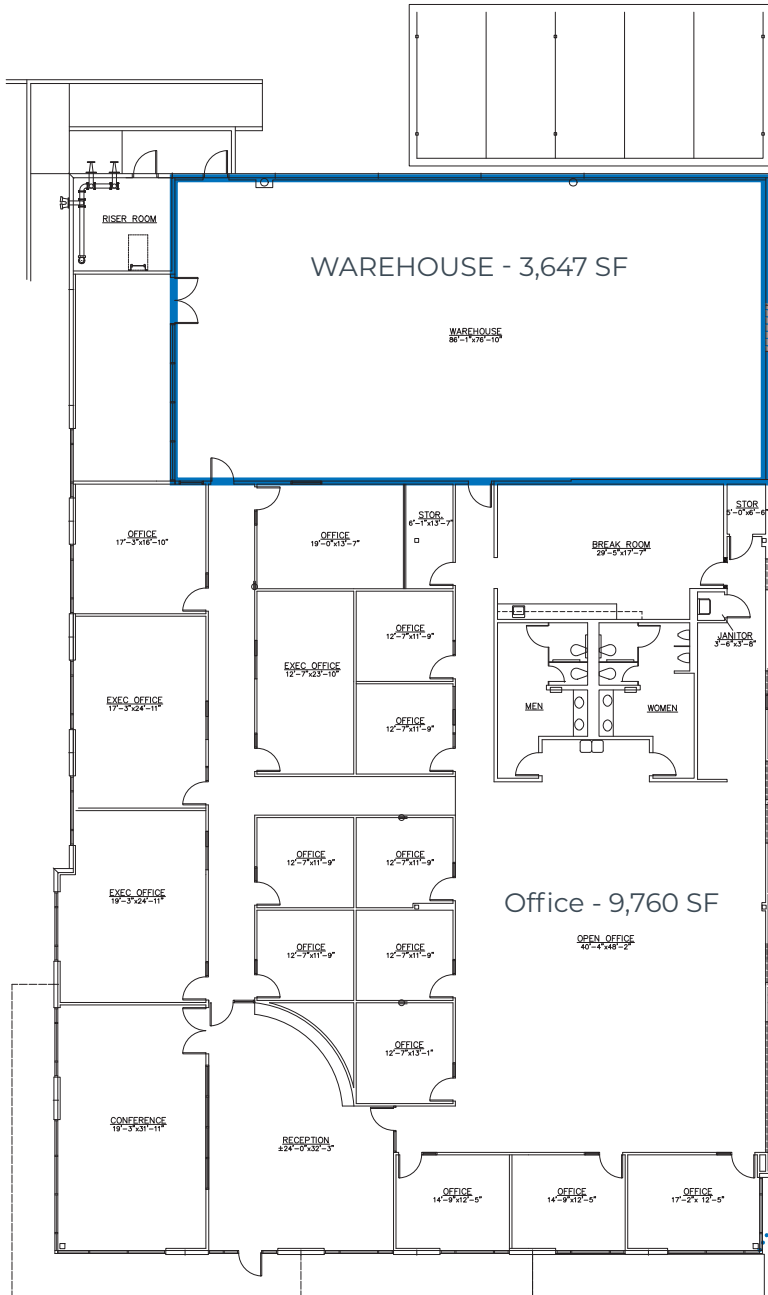
The information provided herein was obtained from sources believed reliable; however, Transwestern makes no guarantees, warranties or representations as to the completeness of accuracy thereof. The presentation of this property is submitted subject to errors, omissions, change of price or conditions, prior to sale or lease, or withdrawal without notice. Copyright © 2021 Transwestern.

PARK PLACE EIGHT

5353 West Sam Houston Parkway North, Suite 390 - Houston, TX 77041

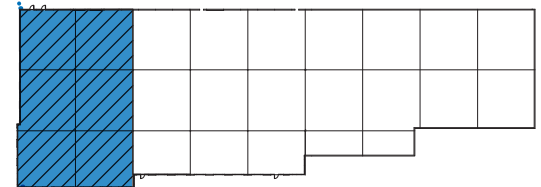


REAL ESTATE SERVICES



Space Features:

- 19' Average clear height
- ADA Accessible
- Fully sprinklered
- Grade level loading / rear load
- Professional and extensive landscaping



OFFICE	9,760 SQ FT
WAREHOUSE	3,647 SQ FT
TOTAL	13,407 SQ FT

Leasing Information:

Jude Filippone

Carter Thurmond

Brian Gammill

The information provided herein was obtained from sources believed reliable; however, Transwestern makes no guarantees, warranties or representations as to the completeness of accuracy thereof. The presentation of this property is submitted subject to errors, omissions, change of price or conditions, prior to sale or lease, or withdrawal without notice. Copyright © 2021 Transwestern.