

**MEDICAL
OFFICE
LEASE**

35,482 SF

CLASS A
MEDICAL
OFFICE SPACE



TRANSWESTERN

REAL ESTATE
SERVICES

MAINLAND MEDICAL ARTS PAVILION

7111 Medical Center Drive - Texas City, TX 77591



Building Amenities:

- Two story 35,482 SF Medical Office Building
- 75 Free surface parking spaces
- Within walking distance of HCA's Mainland Medical Center
- Great tenant mix
- Strong referral base

Availability:

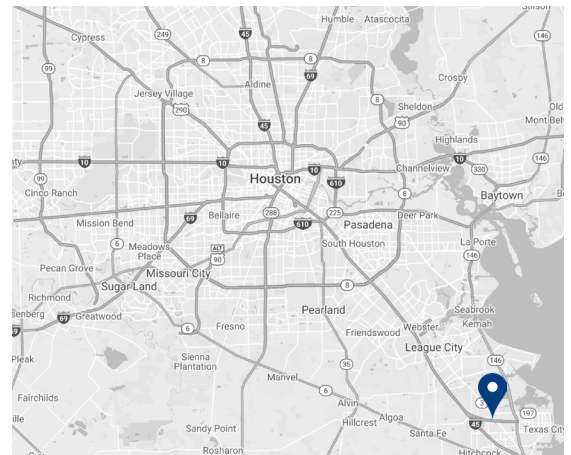
- Suite 110 - 2,237 SF

Rate:

- \$20.00/NNN
- \$12.00 OPEX

TI Allowance:

- Negotiable



Leasing Information:

**Heinrich
Cronje**

832.408.4067

heinrich.cronje@transwestern.com

**Justin
Brasell**

713.231.1595

justin.brasell@transwestern.com

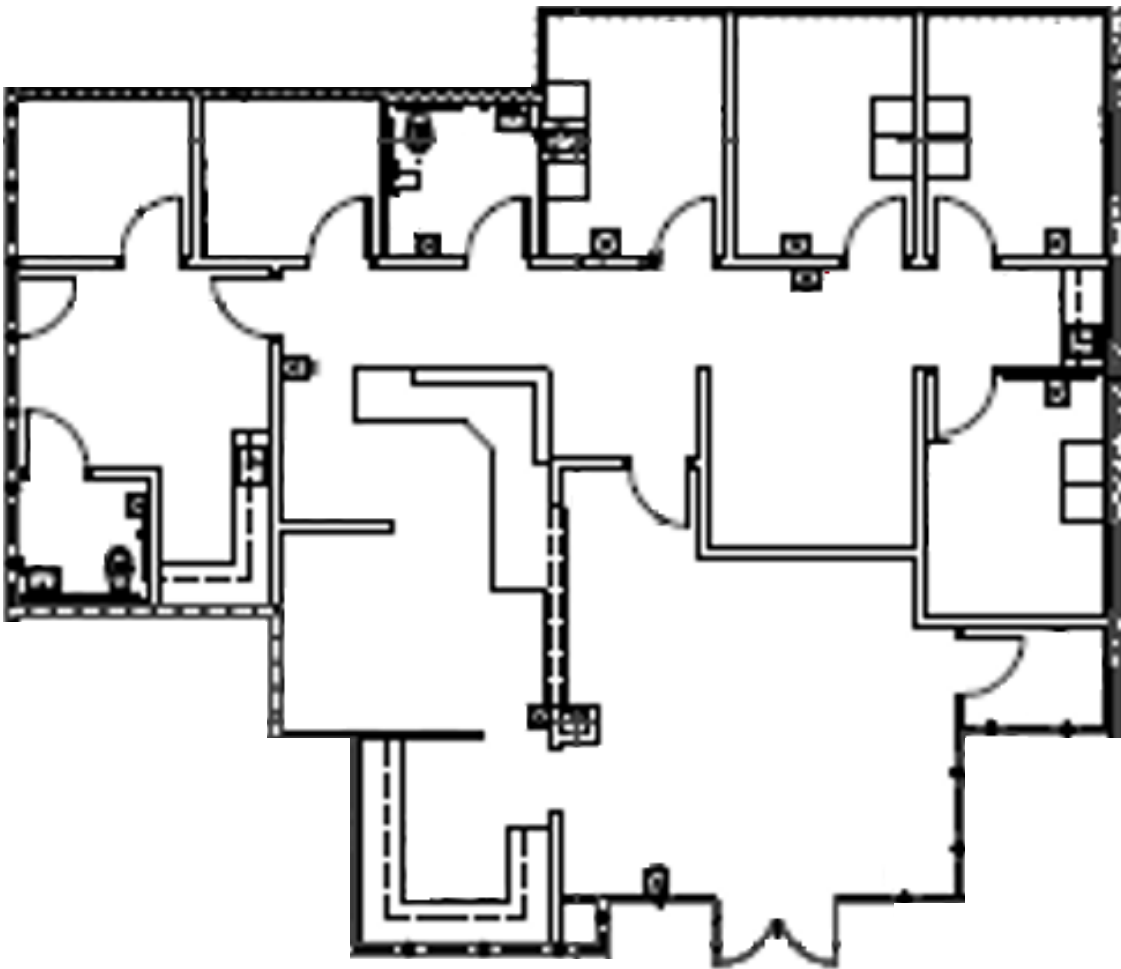
The information provided herein was obtained from sources believed reliable; however, Transwestern makes no guarantees, warranties or representations as to the completeness or accuracy thereof. The presentation of this property is submitted subject to errors, omissions, change of price or conditions, prior sale or lease, or withdrawal without notice. Copyright © 2021 Transwestern.

MAINLAND MEDICAL ARTS PAVILION



7111 Medical Center Drive - Texas City, TX 77591

First Floor | Suite 110 | 2,237 SF



Leasing Information:

**Heinrich
Cronje**
832.408.4067
heinrich.cronje@transwestern.com

**Justin
Brasell**
713.231.1595
justin.brasell@transwestern.com

The information provided herein was obtained from sources believed reliable; however, Transwestern makes no guarantees, warranties or representations as to the completeness or accuracy thereof. The presentation of this property is submitted subject to errors, omissions, change of price or conditions, prior sale or lease, or withdrawal without notice. Copyright © 2021 Transwestern.