

**FOR LEASE 19,945 SF OFFICE/WAREHOUSE
WITH NEW MAKE-READY IMPROVEMENTS IN PLACE**

5353 W. Sam Houston Parkway N | Suite 100 | Houston, TX 77041

PREMIUM BELTWAY 8 FRONTAGE!

 190,000 Cars Pass Per Day on Beltway 8

 Transwestern

PARK 8 PLACE
E I G H T



CONTACTS

JUDE FILIPPONE

+1 713 270 3318

jude.filippone@transwestern.com

BRIAN GAMMILL

+1 713 270 3321

brian.gammill@transwestern.com

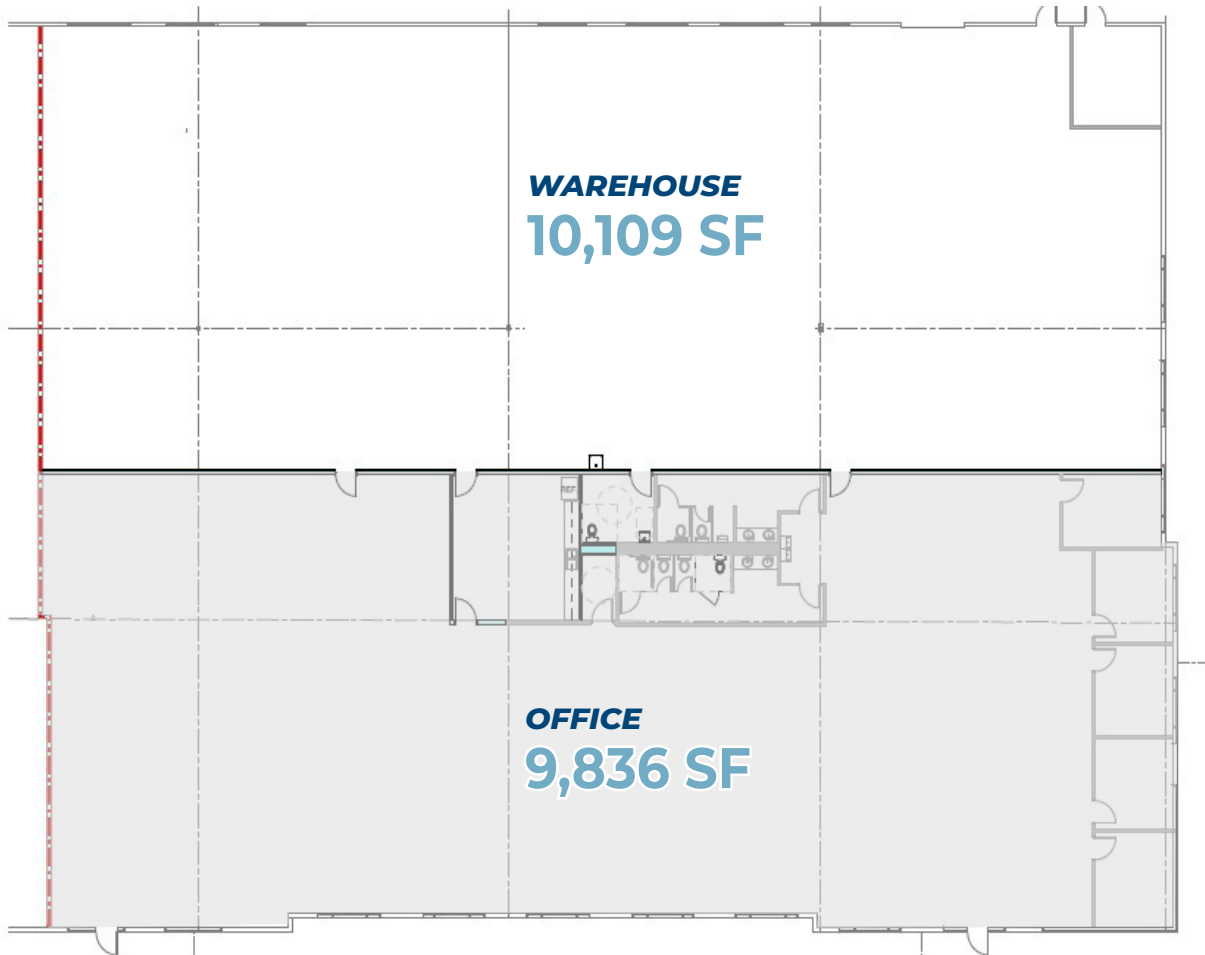
BUCHANAN STREET
PARTNERS, L.P.

FLOOR PLAN - 19,945 SF

PARK 8 PLACE

EIGHT

5353 W. Sam Houston Parkway N | Suite 100 | Houston, TX 77041



PROPERTY FEATURES

19' 

Clear Height



Master Planned Environment



End Cap Space



Excellent Beltway Visibility



Grade Level Loading



190,000 Cars Per Day on Beltway 8



Fully Sprinklered



Outstanding Visibility and Corporate Identity



Institutional Ownership



Concrete Tiltwall Construction

T INTERIOR - 19,945 SF

PARK 8 PLACE

E I G H T

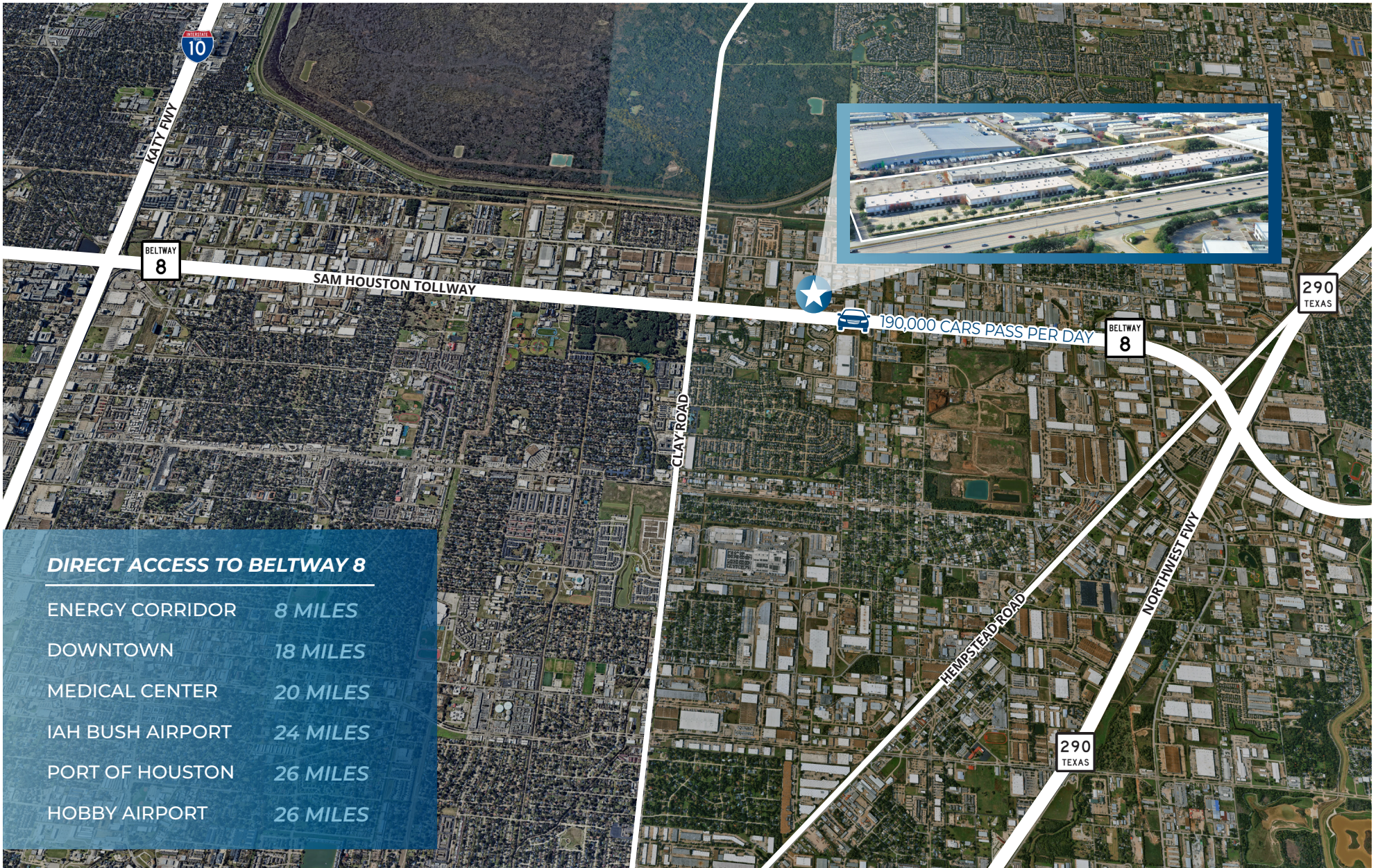
5353 W. Sam Houston Parkway N | Suite 100 | Houston, TX 77041

NEW CLASS A MAKE-READY IMPROVEMENTS IN PLACE



Prime West Houston Location

5353 W. Sam Houston Parkway N | Suite 100 | Houston, TX 77041



190,000 CARS PASS PER DAY

DIRECT ACCESS TO BELTWAY 8

- ENERGY CORRIDOR 8 MILES
- DOWNTOWN 18 MILES
- MEDICAL CENTER 20 MILES
- IAH BUSH AIRPORT 24 MILES
- PORT OF HOUSTON 26 MILES
- HOBBY AIRPORT 26 MILES

PARK 8 PLACE

EIGHT

SUITE 100 | 19,945 SF

BELTWAY
8

Transwestern
LEASING CONTACTS

JUDE FILIPPONE
+1 713 270 3318
jude.filippone@transwestern.com

BRIAN GAMMILL
+1 713 270 3321
brian.gammill@transwestern.com

OWNED BY
BUCHANAN STREET
PARTNERS, L.P.

The information provided herein was obtained from sources believed reliable; however, Transwestern makes no guarantees, warranties or representations as to the completeness or accuracy thereof. The presentation of this property is submitted subject to errors, omissions, change of price or conditions, prior sale or lease, or withdrawal without notice. Copyright © 2026 Transwestern.