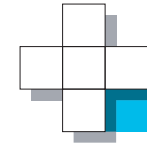


ST. MARY'S MEDICAL PAVILION



PMB

ADVANCING HEALTHCARE REAL ESTATE

1707 W. Saint Mary's Road | Tucson, AZ 85745



T TRANSWESTERN[®]

CARONDELET ST. MARY'S HOSPITAL CAMPUS

ST. MARY'S MEDICAL PAVILION

Located in the heart of
**Carondelet St. Mary's
Hospital Campus**



PROPERTY FEATURES

- Class A Medical Office Building
- Physician investment opportunities available
- Walking distance to hospital and ancillary buildings within the campus
- Expertly designed suites to accommodate today's efficient delivery models
- Servicing an outpatient service area of 350,000 patients
- Easy access to shopping, restaurants and the I-10 freeway
- Developed and professionally managed by PMB <https://learn.pmbllc.com/st-marys-leasing>

BUILD TO SUIT

OCCUPANCY:

\$24.00/SF

AVAILABLE SPACE:

Up to 12,359 RSF
(2nd floor only)

RBA WITH 2 STORIES:

±55,000 SF

TI ALLOWANCE:

\$65.00/USF

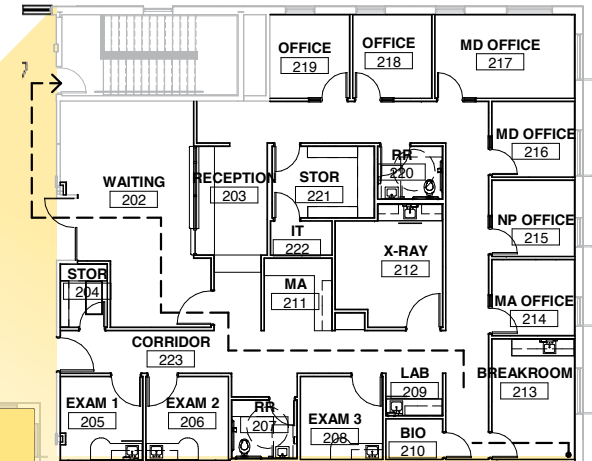
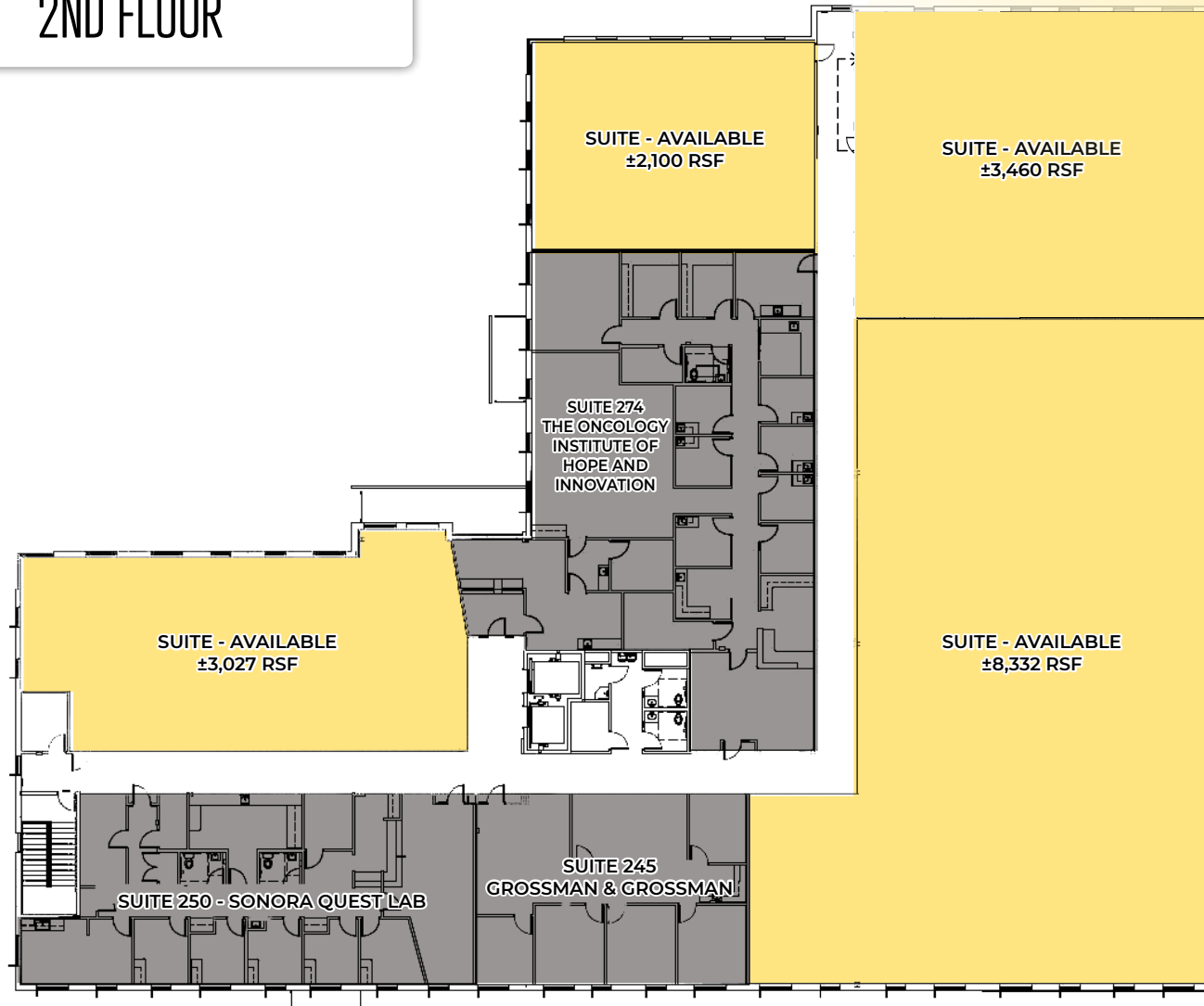
PARKING:

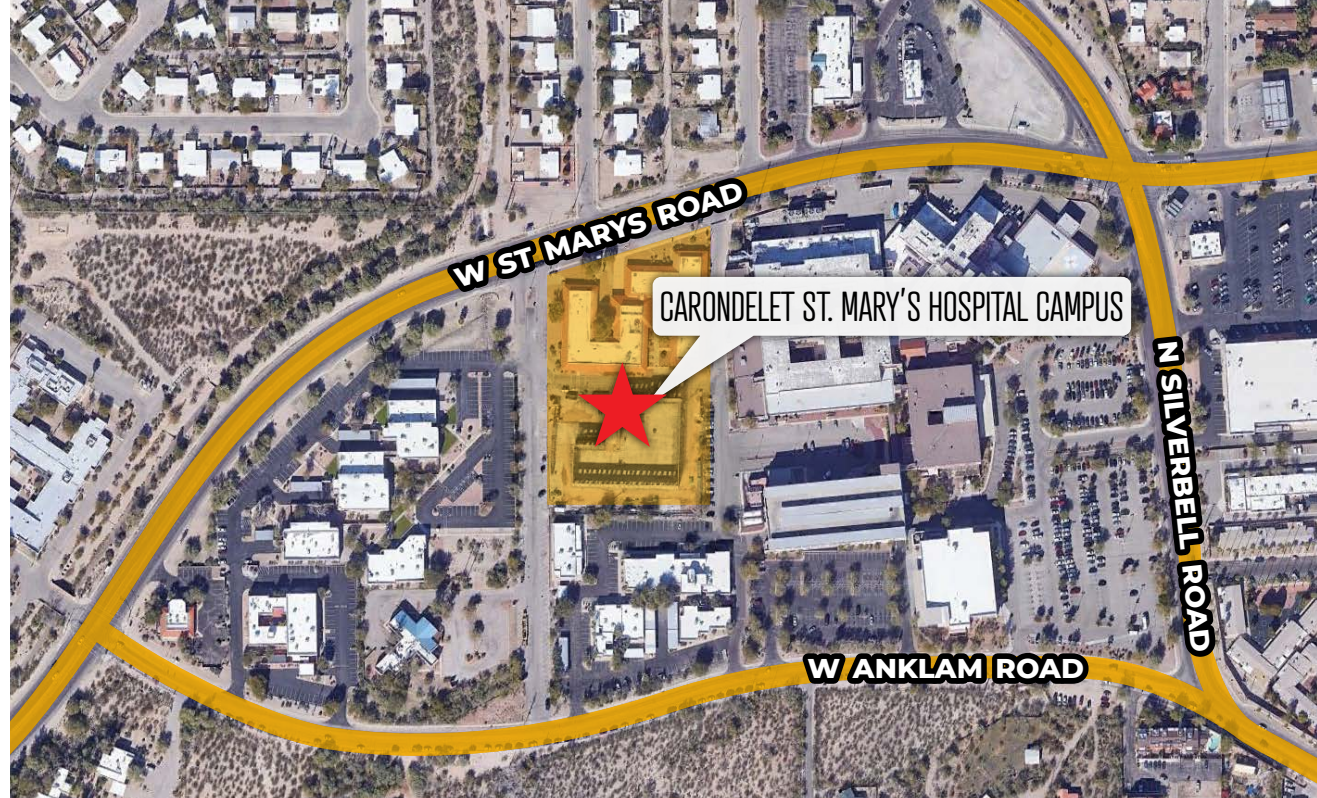
275 Spaces, 5/1,000 SF

FLOOR PLAN

2ND FLOOR

READY FOR OCCUPANCY
± 3,460 RSF





For additional information:

Kevin Smigiel

Senior Associate

602.265.5502

kevin.smigiel@transwestern.com

Vince Femiano

Senior Vice President

602.954.7559

vince.femiano@transwestern.com

Kate Morris

Senior Vice President

602.296.6369

kate.morris@transwestern.com



TRANSWESTERN

REAL ESTATE SERVICES

2501 East Camelback Road, Suite 1

Phoenix, Arizona 85016

T 602.956.5000 F 602.956.5333

transwestern.com