

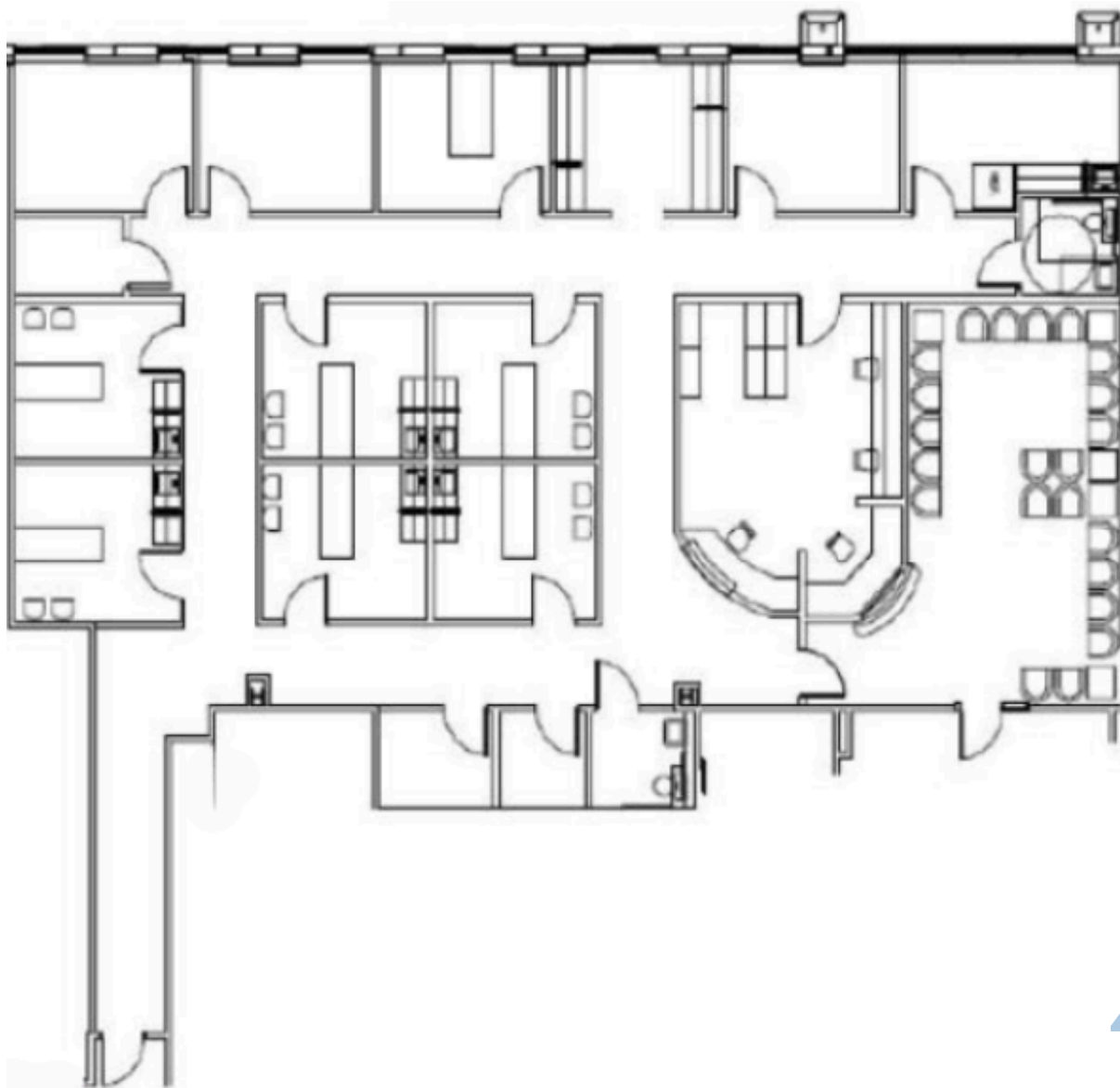
MEDICAL PLAZA 3

1600 Medical Way Snellville, GA 30078

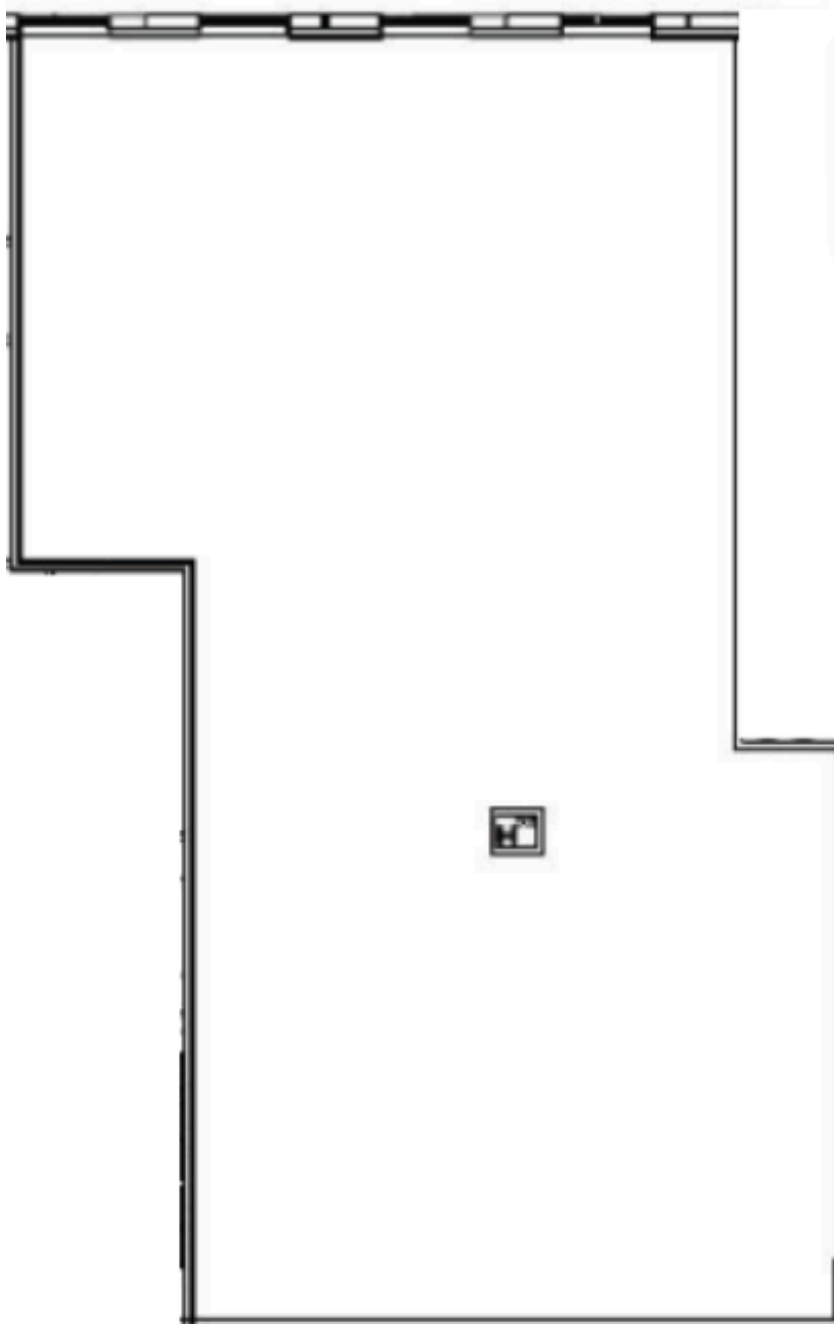



TRANSWESTERN
REAL ESTATE
SERVICES

AVAILABILITIES



SUITE 220
4,121- 6,991 RSF



SUITE 230

2,870 - 6,991 RSF



PROPERTY HIGHLIGHTS



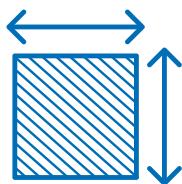
Attached to
Piedmont Eastside Hospital



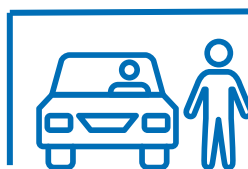
15,000 +/- SF Second Generation
Medical Space Available



1 Mile from Highway 124



2,870 –6,991 SF Contiguous
Space Available

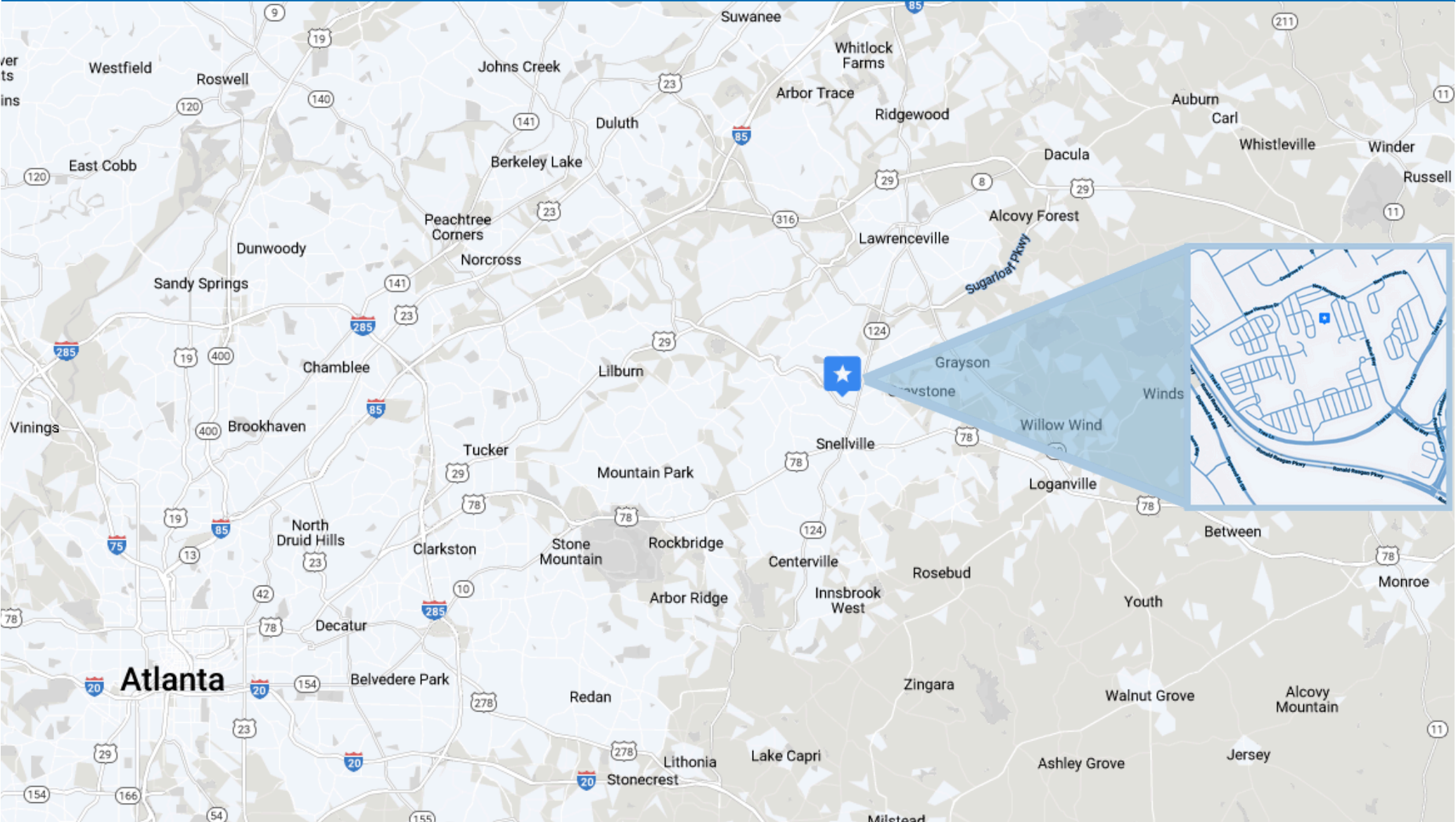


Covered Patient Drop-Off
Available



1.5 Miles from The Grove
at Towne Center

MAP LOCATION



Let's do this.



TRANSWESTERN

REAL ESTATE
SERVICES



SOUTHEAST HEALTHCARE ADVISORY SERVICES

STEVE HALL

Senior Managing Director,
Healthcare Advisory Services

404.842.6560

steve.hall@transwestern.com

JOHN V. LOPEZ, CCIM, RPA

Managing Director, Healthcare
Advisory Services

404.842.6562

john.lopez@transwestern.com

BO STUART

Vice President,
Healthcare Advisory Services

404.842.6556

bo.stuart@transwestern.com

MARSH HAZLEHURST

Associate,
Healthcare Advisory Services

404.842.6574

marsh.hazlehurst@transwestern.com