

**42,033 SF
FOR LEASE**

OFFICE &
WAREHOUSE

CLASS A
PROJECT

NORTH
SUBMARKET



TRANSWESTERN

REAL ESTATE
SERVICES

PINTO BUSINESS PARK PLAZA VERDE 1

545 Plaza Verde Drive - Houston, TX 77038

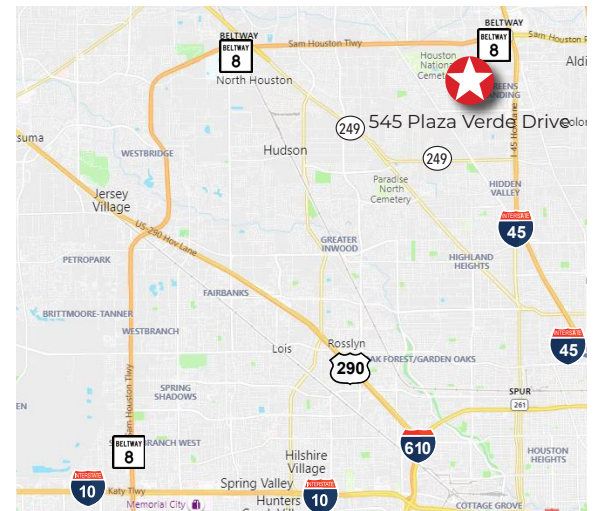


Availability:

- Office: 3,033 SF
- Warehouse: 39,000 SF
- Total: 42,033 SF

Building Features:

- The most preeminent business and industrial park in North Houston
- Strategically located at Beltway 8 and Interstate 45
- Master planned, deed restricted business park
- 971 total acres for future expansion or corporate campus
- Outstanding access with eleven (11) ingress/egress points
- Major tenants in the park include Amazon, Sysco, Coca Cola, Red Bull, HD Supply, The Reynolds Co.
- Numerous amenities in close proximity to park



Leasing Information:

Jude Filippone

713.270.3318

jude.filippone@transwestern.com

Darryl Noon

713.270.3325

darryl.noon@transwestern.com

Brian Gammill

713.270.3321

brian.gammill@transwestern.com

The information provided herein was obtained from sources believed reliable; however, Transwestern makes no guarantees, warranties or representations as to the completeness of accuracy thereof. The presentation of this property is submitted subject to errors, omissions, change of price or conditions, prior to sale or lease, or withdrawal without notice. Copyright © 2020 Transwestern.

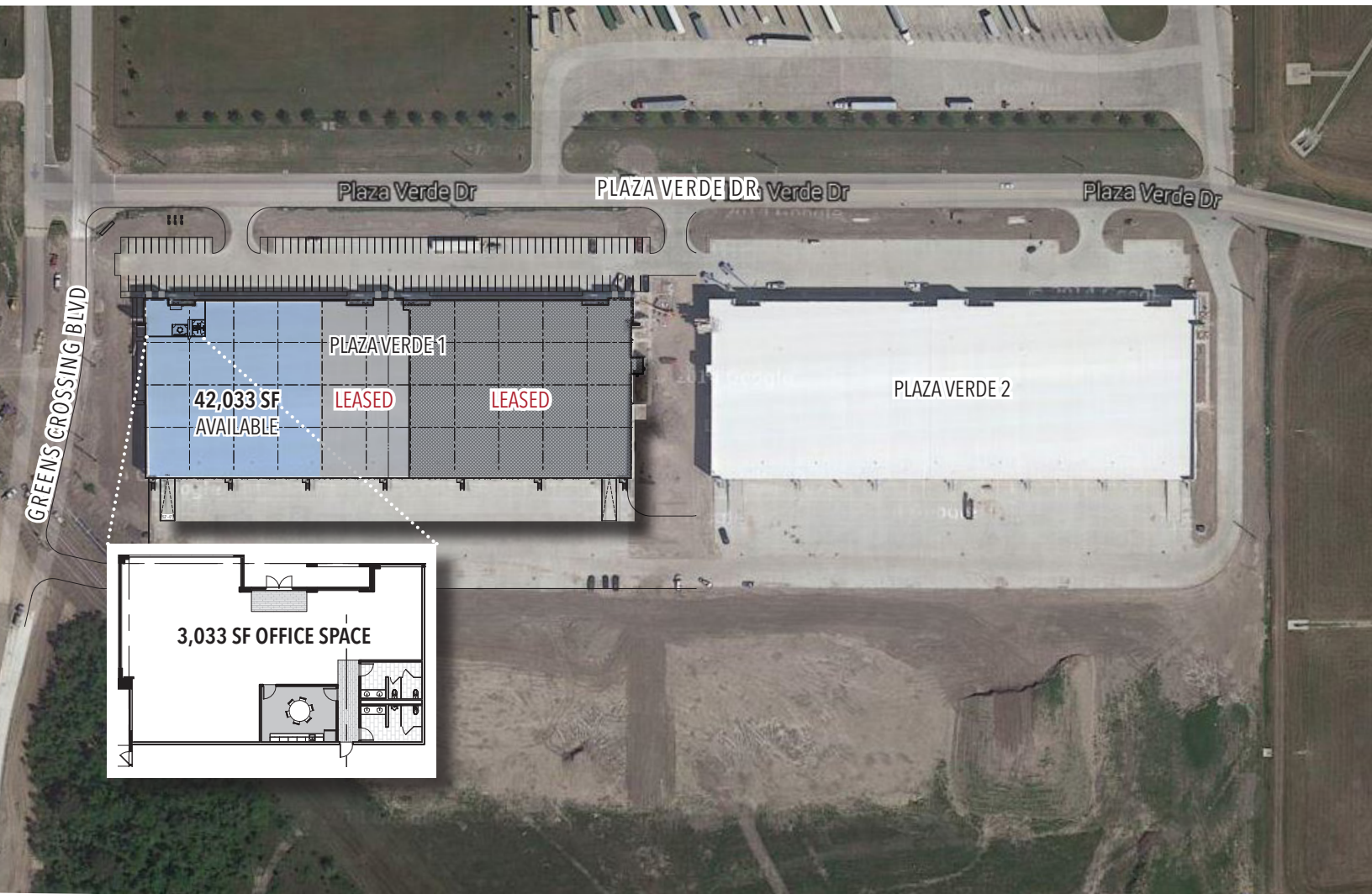
PINTO BUSINESS PARK PLAZA VERDE 1

545 Plaza Verde Drive - Houston, TX 77038



TRANSWESTERN

REAL ESTATE
SERVICES



3,033 SF OFFICE SPACE

Space Features:

- 28' Clear height
- ESFR Sprinklered
- Rear-load
- Corner space / move-in ready
- Secured truck court with controlled access
- Column spacing 52'x'50' (60' speed bay)
- 130' Truck court
- Eleven (11) dock-high doors
- One (1) drive-in ramp with 12'x16' overhead doors
- Two (2) LED Warehouse fixtures per bay
- Monument signage available

Leasing Information:

Jude Filippone

713.270.3318

jude.filippone@transwestern.com

Darryl Noon

713.270.3325

darryl.noon@transwestern.com

Brian Gammill

713.270.3321

brian.gammill@transwestern.com

The information provided herein was obtained from sources believed reliable; however, Transwestern makes no guarantees, warranties or representations as to the completeness of accuracy thereof. The presentation of this property is submitted subject to errors, omissions, change of price or conditions, prior to sale or lease, or withdrawal without notice. Copyright © 2020 Transwestern.

PINTO BUSINESS PARK PLAZA VERDE 1

545 Plaza Verde Drive - Houston, TX 77038



TRANSWESTERN

REAL ESTATE
SERVICES



Leasing Information:

Jude Filippone

713.270.3318

jude.filippone@transwestern.com

Darryl Noon

713.270.3325

darryl.noon@transwestern.com

Brian Gammill

713.270.3321

brian.gammill@transwestern.com

The information provided herein was obtained from sources believed reliable; however, Transwestern makes no guarantees, warranties or representations as to the completeness of accuracy thereof. The presentation of this property is submitted subject to errors, omissions, change of price or conditions, prior to sale or lease, or withdrawal without notice. Copyright © 2020 Transwestern.