

LOVETT

INDUSTRIAL

37,125 SF

FOR LEASE | CLASS A
PRIME END-CAP SPACE

CLAYMOORE

BUSINESS PARK

CLAYMOORE

BUSINESS PARK

37,125 SF WITH 4,920 SF OF OFFICE
3900 CLAYMOORE RD | SUITE 100 & 130 | HOUSTON, TX 77043

THE GALLERIA

MEMORIAL CITY



KATY FREEWAY



W. SAM HOUSTON PKWY N.

10801 MOSS RIDGE RD

3550 BRITTMOORE RD

3700 CLAYMOORE PARK DR

3900 CLAYMOORE RD
SUITE 100 & 130
37,125 SF AVAILABLE

11555 CLAY RD

KEMPWOOD

3600 BRITTMOORE RD



11711 CLAY RD

3800 BRITTMOORE PARK DR

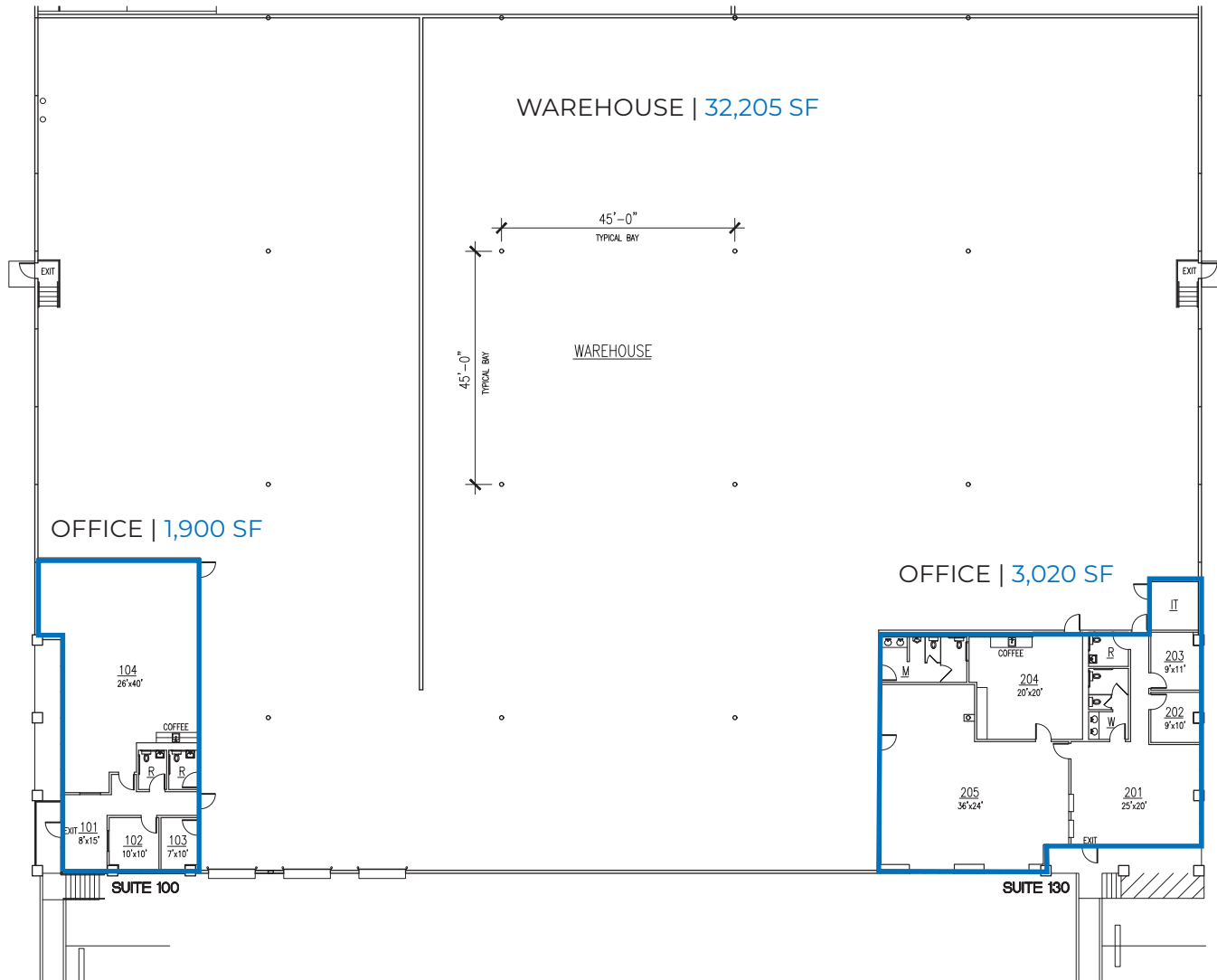
CLAYMOORE PARKWAY DR

CLAY ROAD

BRITTMOORE ROAD

AERIAL MAP

- Master-planned park with excellent accessibility
- Strategically located on Brittmoore Rd. just off Clay Rd. and Beltway 8
- Outstanding corporate identity
- Irreplaceable infill location



LOVETT

INDUSTRIAL

FLOOR PLAN

SPACE FEATURES:

- 37,125 SF Total
- 4,920 SF Office
- 32,205 SF Warehouse
- End-cap suite
- Front-load / Dock-high
- 24' Clear height
- Five (5) dock-high doors
- Two (2) semi-dock doors
- Two (2) drive-in ramps
- 165' Building depth
- Fully sprinklered

LOCAL AMENITIES

RESTAURANTS

- 1 Pappas BBQ
- 2 Pappadeaux Seafood
- 3 James Coney Island
- 4 Rudy's Bar-BQ
- 5 Taco Cabana
- 6 McDonald's
- 7 Starbucks
- 8 Chick-Fil-A
- 9 Niko Niko'shen
- 10 Kirby Ice House

HOTELS

- 11 Residence Inn by Marriott
- 12 Four Points by Sheraton
- 13 Comfort Suites
- 14 Staybridge Suites
- 15 The Westin Houston

SERVICES/RETAIL

- 16 Clay Road YMCA
- 17 Memorial City Mall
- 18 Life Time Fitness
- 19 CITYCENTRE
- 20 Town & Country Village
- 21 FedEx



LOVETT

INDUSTRIAL



T Transwestern
LEASING INFORMATION:

Darryl Noon
P: 713.270.3325
E: Darryl.Noon@transwestern.com

Jude Filippone
P: 713.270.3318
E: Jude.Filippone@transwestern.com

Brian Gammill
P: 713.270.3321
E: Brian.Gammill@transwestern.com

The information provided herein was obtained from sources believed reliable; however, Transwestern makes no guarantees, warranties or representations as to the completeness or accuracy thereof. The presentation of this property is submitted subject to errors, omissions, change of price or conditions, prior sale or lease, or withdrawal without notice. Copyright © 2023 Transwestern.