

FOR LEASE

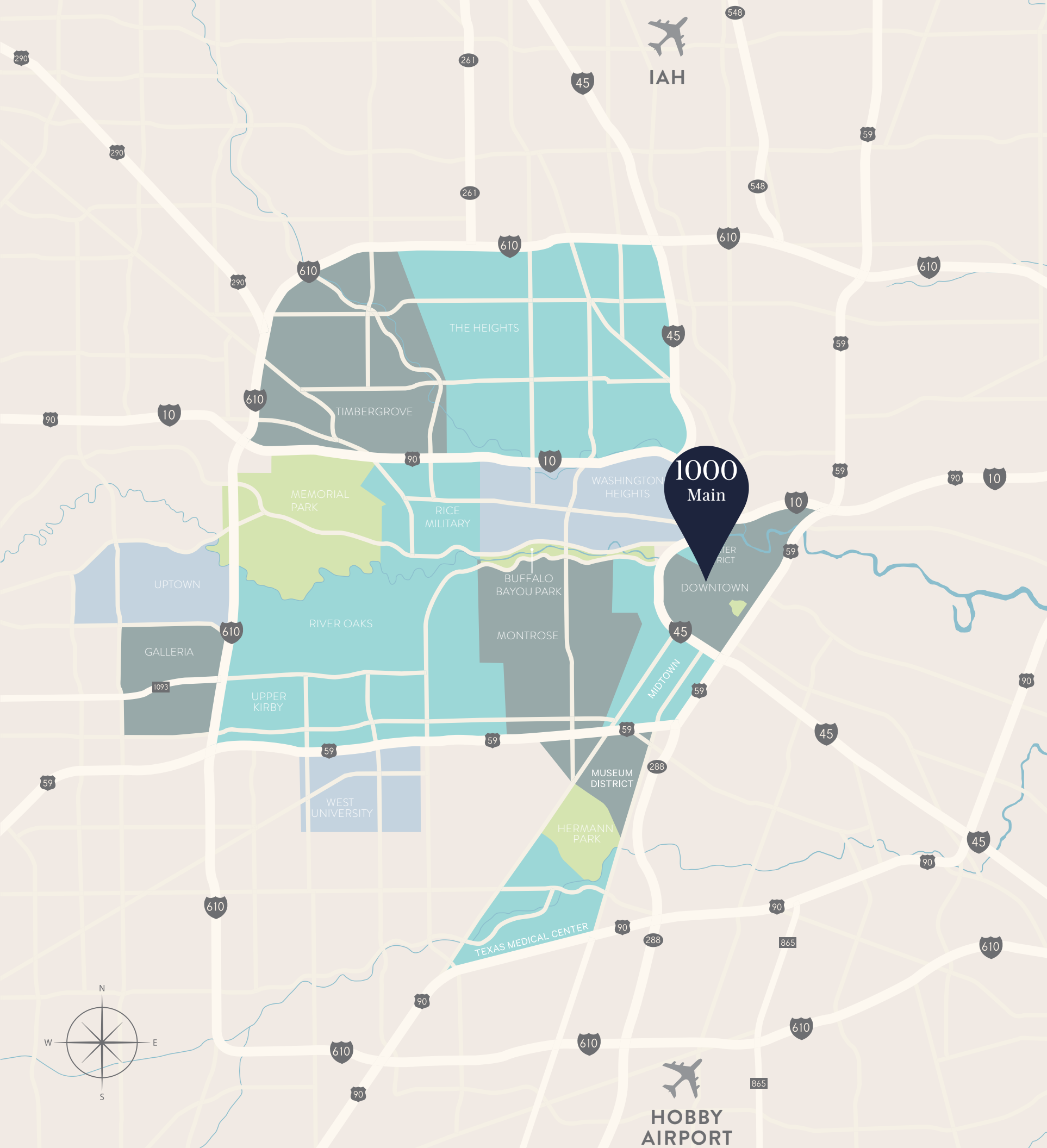
# Street Level and Tunnel Restaurant/Retail

1000 Main Street | Houston, TX 77002



**TRANSWESTERN RETAIL SERVICES**

 **Transwestern**



HOUSTON

# The Center of it All

## Drive Times

The Heights	9 mins
The Medical Center	10 mins
River Oaks	10 mins
Tanglewood	14 mins
West University Place	14 mins
Port of Houston	14 mins
The Galleria	16 mins
Hobby Airport	16 mins
Memorial	18 mins
Baybrook	22 mins
George Bush Intercontinental Airport (IAH)	22 mins
Sugar Land	24 mins
Cypress	28 mins
The Woodlands	30 mins
Katy	35 mins
Kingwood	35 mins

## OPPORTUNITY

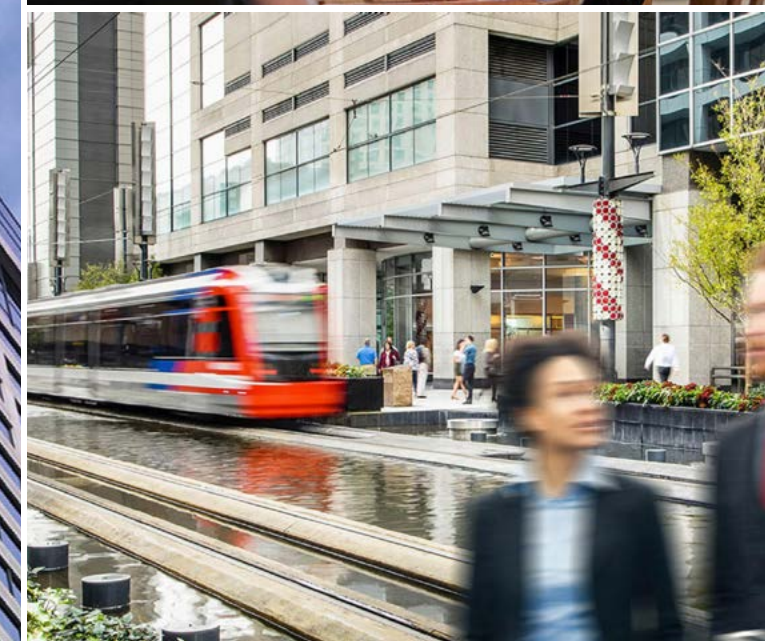
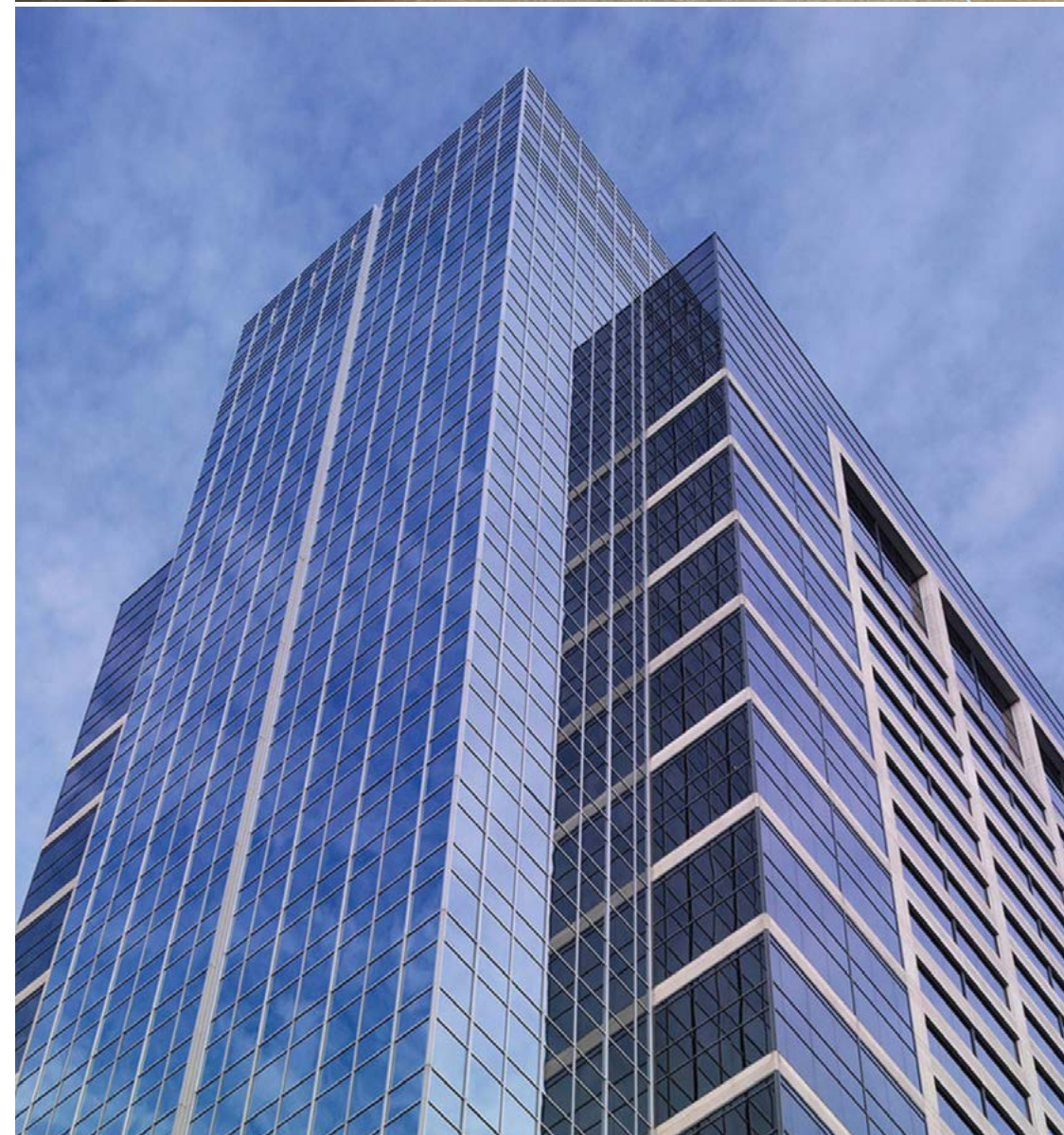
# The Heart of the CBD

Houston's climate-controlled tunnel system connects thousands of people across 95 city blocks of downtown. The tallest, widest and grandest entry in the system is The Main Rotunda – at 1000 Main. Providing easy access to a variety of shops and services, our Main Rotunda is also exclusive home to favorite food and dining.

787,260 SF Class A office space, with 49,901 SF of retail. The building will soon be at 74% occupancy, with three pedestrian tunnel connections.

Co-tenants include: Local Cuban, Potbelly, Wok & Roll, Sult'an Pepper Mediterranean Cuisine, Evolutionary Eye Care, Glamour's Sundries, Jodas Burgers, and Corner Bakery.

- Street Level - 1,994 SF
- Street Level - 7,126 SF
- Tunnel Level - 1,536 SF
- Tunnel Level - 1,991 SF
- Tunnel Level - 3,200 SF



THE NEIGHBORHOOD

# The CBD advantage

Second to none with a dynamic entertainment and business district, Downtown Houston boasts the largest concentration of employment in the region.

POPULATION

<b>28,355</b>	<b>198,979</b>	<b>443,928</b>
1 mile	3 mile	5 mile

DAYTIME POPULATION

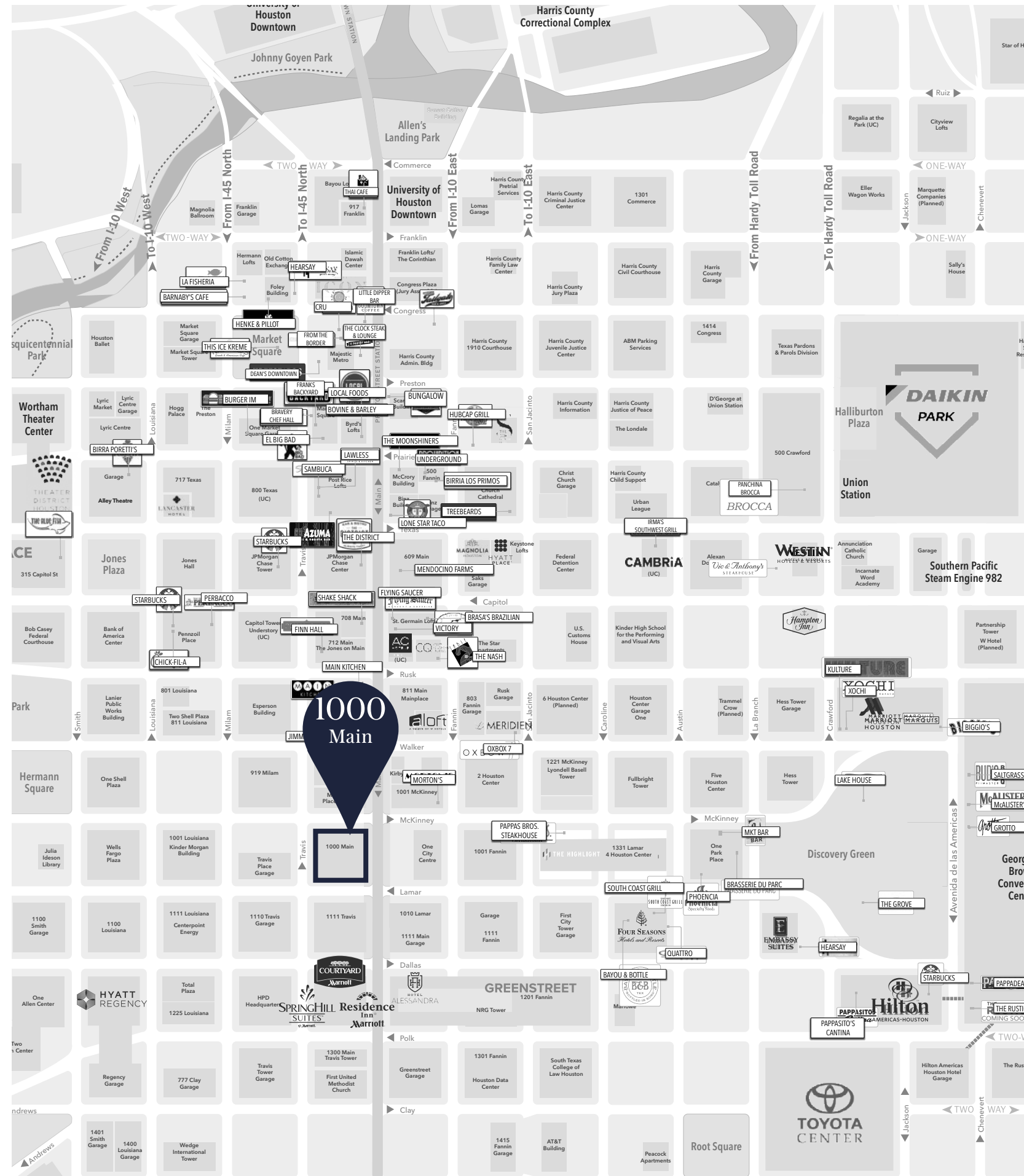
<b>149,906</b>	<b>342,110</b>	<b>784,633</b>
1 mile	3 mile	5 mile

AVERAGE HOUSEHOLD INCOME

<b>\$142,453</b>	<b>\$127,728</b>	<b>\$127,291</b>
1 mile	3 mile	5 mile

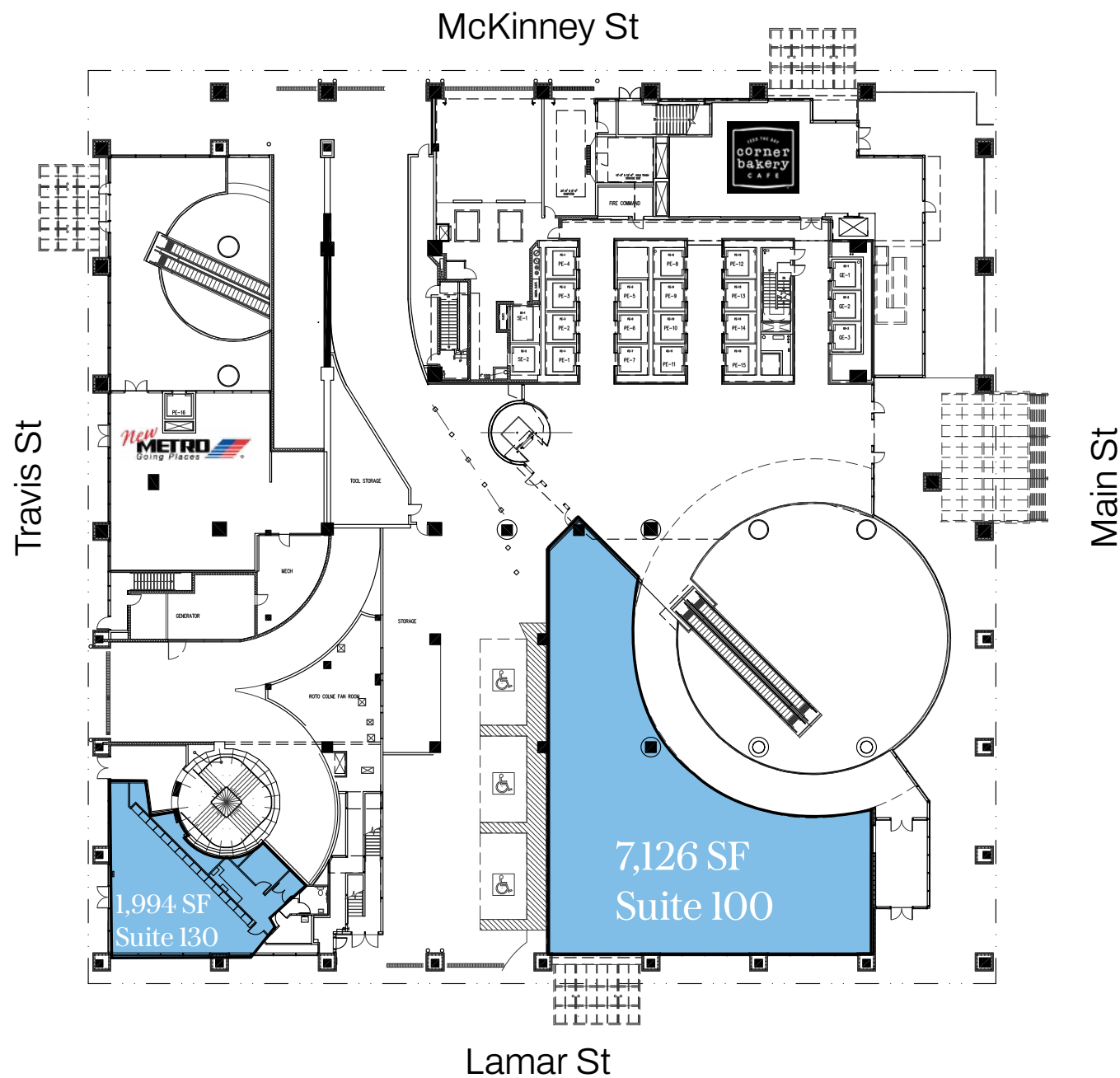
BACHELORS DEGREE OR HIGHER

<b>49.1%</b>	<b>57.3%</b>	<b>53.7%</b>
1 mile	3 mile	5 mile

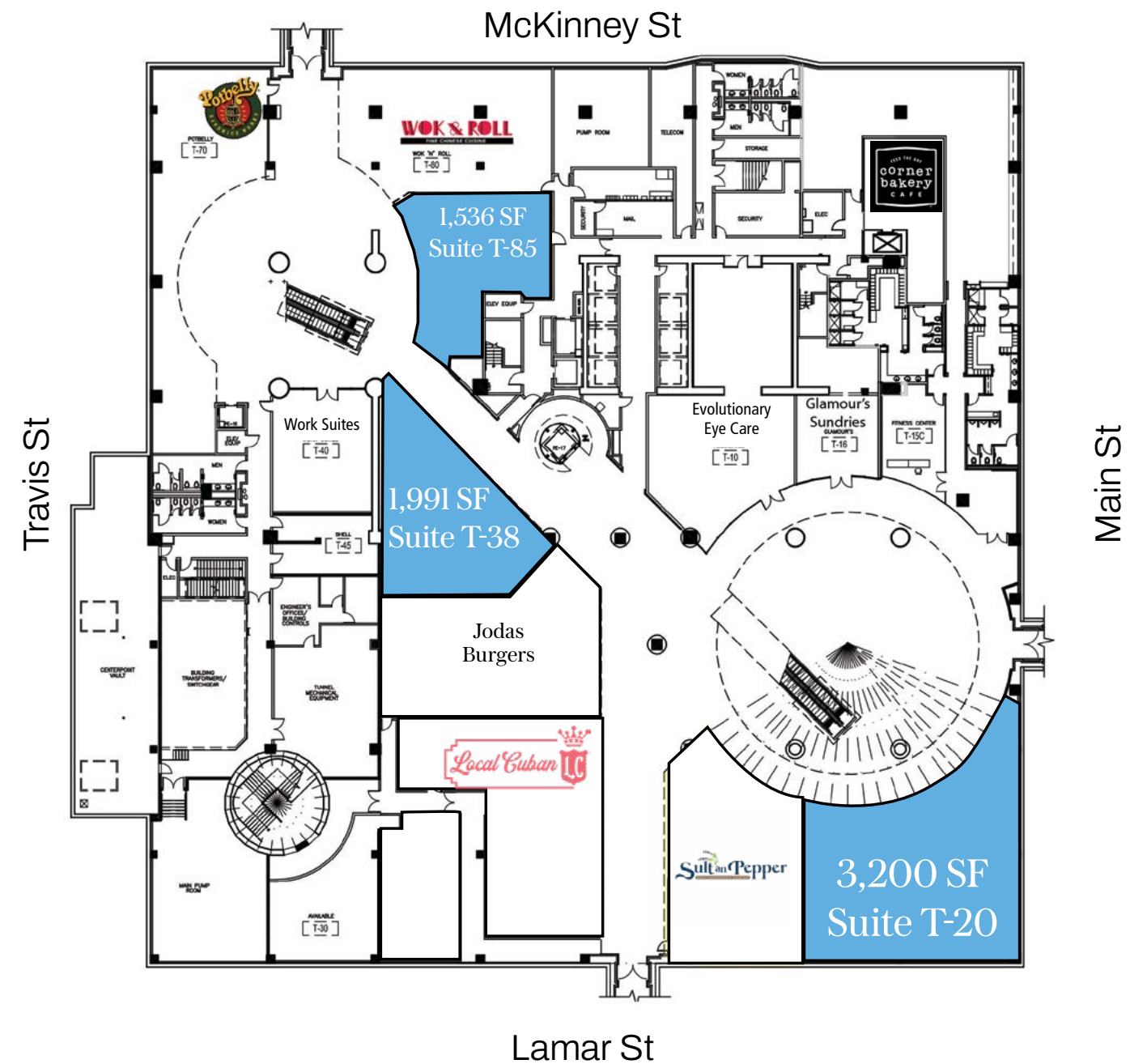


# Street Level and Tunnel Layout

**STREET PLAN**



**TUNNEL PLAN**



DOWNTOWN HOUSTON



**GREENSTREET**  
Guadalajara del Centro, House of Blues, McCormick & Schmick's, The Palm, Tom's Watch Bar, Lifetime, Pete's Piano Bar, Punch Line

**THE HIGHLIGHT**  
Central Mart, Aloha Poke, Orange Taco, Bullritos, Chick-fil-a, Doozo's, Otto's BBQ, Leaf & Grain, Pappa's Bros Steakhouse, Potbelly Sandwich, Salata, Simon's Cafe, Wok n' Roll, Puttshack

**UHD**  
University of Houston  
DOWNTOWN  
14,000 STUDENTS

**45**

213,000 CPD

**69**

205,000 CPD

15,000 CPD

1000 Main

**59**

**DDVA Compass**

**THE RUSTIC**

**TOYOTA CENTER**

**GRB HOUSTON**

**PAPPASITOS**

**PAPPADEAUX**

**McALISTER'S DELI**

**SALTGRASS**

**BIGGIO'S**

**THE GROVE**

**HEARSAY**

**Lake House**

**XOCHI**

**CUEVA**

**CULTURE**

**Vic & Anthony's STEAKHOUSE**

**OSO KRISTALLA**

**HUBCAP**

**BRavery**

**LOCAL**

**batanga**

**BARNABY'S CAFE**

**PRESTON ST**

**LEAF & GRAIN**

**PHB**

**PERBACCO**

**ADAIR CONCEPTS**

**PAPPAS**

**UNDERSTORY**

**COMMON BOND**

**MENDOCINO FARMS sandwich market**

**BENIHANA THE JAPANESE STEAKHOUSE**

**RUSSOS PIZZERIA**

**island grill**

**sweetgreen**

**SHAKE SHACK**

**MORTON'S**

**PAPPAS BROS.**

**SHAKE SHACK**

**LA BRANCH ST**

**LA BRANCH ST**

**LA BRANCH ST**

**LA BRANCH ST**

**LA BRANCH ST**

**LA BRANCH ST**

**LA BRANCH ST**

**LA BRANCH ST**

**LA BRANCH ST**

**LA BRANCH ST**

**LA BRANCH ST**

**LA BRANCH ST**

**LA BRANCH ST**

**LA BRANCH ST**

**LA BRANCH ST**

**LA BRANCH ST**

**LA BRANCH ST**

**LA BRANCH ST**



EXPERIENCED RETAIL EXPERTS  
TRANSWESTERN  
RETAIL SERVICES  
SERVING UP SOLUTIONS

 Transwestern

## TRANSWESTERN RETAIL SERVICES

**Paula Musa**

Vice President

713.231.1630

[Paula.Musa@transwestern.com](mailto:Paula.Musa@transwestern.com)

**Crystal Allen**

Managing Director

713.270.3360

[Crystal.Allen@transwestern.com](mailto:Crystal.Allen@transwestern.com)