

OFFICE & WAREHOUSE FOR LEASE!

32,760 SQ FT OFFICE &
WAREHOUSE



FEATURES & AMENITIES

- 32,760 SF total | 5,372 SF office
- End-cap space
- The most preeminent business and industrial park in North Houston
- Strategically located at Beltway 8 and Interstate 45
- Master planned, deed restricted business park
- 971 total acres for future expansion or corporate campus
- Outstanding access with eleven (11) ingress/egress points
- Major tenants in the park include Amazon, Sysco, Coca Cola, BNSF Logistics, HD Supply, The Reynolds Co.
- Numerous amenities in close proximity to park

LOCATION MAP



LEASING INFORMATION

Jude Filippone

713.270.3318

Jude.Filippone@transwestern.com

Darryl Noon

713.270.3325

Darryl.Noon@transwestern.com

Brian Gammill

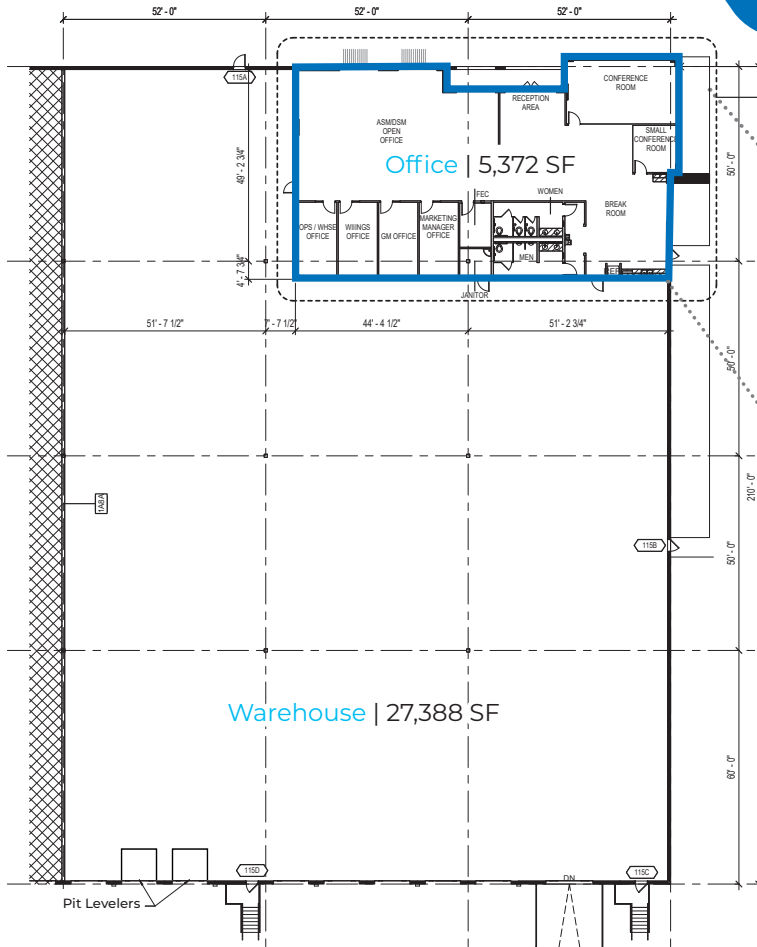
713.270.3321

Brian.Gammill@transwestern.com

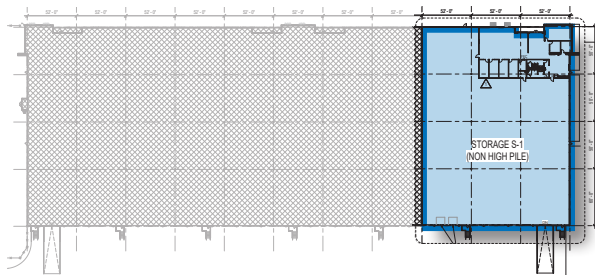
T Transwestern

FLOOR PLAN

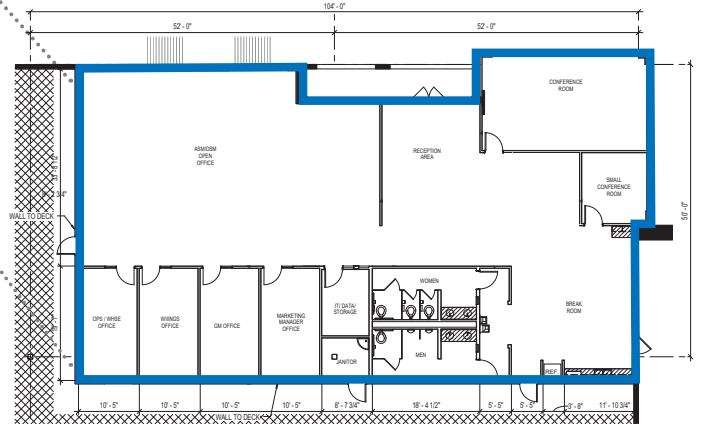
32,760 SQ FT OFFICE & WAREHOUSE



SITE PLAN



OFFICE PLAN



SPACE FEATURES

- 32,760 SF total | 5,372 SF office
- 28' Clear height
- ESRF Sprinklered
- Eight (8) Dock high doors with 2 pit-levelers
- One (1) oversized door with drive-in ramp
- T-5 lighting - two (2) per bay
- 400 Amps of Service
- Column spacing 52' x 50' (60' speed bay)
- Fenced truck court area with controlled access

LEASING INFORMATION

Jude Filippone
713.270.3318
Jude.Filippone@transwestern.com

Darryl Noon
713.270.3325
Darryl.Noon@transwestern.com

Brian Gammill
713.270.3321
Brian.Gammill@transwestern.com



SITE PLAN

32,760 SQ FT

**OFFICE &
WAREHOUSE**



LEASING INFORMATION

Jude Filippone
713.270.3318
Jude.Filippone@transwestern.com

Darryl Noon
713.270.3325
Darryl.Noon@transwestern.com

Brian Gammill
713.270.3321
Brian.Gammill@transwestern.com





HOUSTON GALLERIA 20 MILES

DOWNTOWN 15 MILES

PORT OF HOUSTON 22 MILES

MEDICAL CENTER 20 MILES

HOBBY AIRPORT 25 MILES

IAH BUSH AIRPORT 10 MILES

LEASING INFORMATION

Jude Filippone
713.270.3318
Jude.Filippone@transwestern.com

Darryl Noon
713.270.3325
Darryl.Noon@transwestern.com

Brian Gammill
713.270.3321
Brian.Gammill@transwestern.com

