



4800 Overton Plaza

CLASS A STATE OF THE ART FITNESS FOR LEASE

4800 Overton Plaza
Fort Worth, TX 76109

 Transwestern

About the Building

A 150,000 SF Class A office building in Southwest Fort Worth, just north of I-20 off Hulen Street, offering tenants free surface and structured parking at a 3:1,000 ratio, along with amenities such as a modern fitness center, 24/7 card key access, and on-site security.

BUILDING FEATURES

- 150,000 SF Class A office building located in
- Southwest Fort Worth
- Located just north of I-20 off Hulen St
- Free Unreserved Surface and Structured Parking
- 3:1,000 SF Parking Ratio
- State of the Art Fitness Center
- 24/7 Card Key Access & Onsite Security free for tenants

LEASE INFORMATION

- Available Suites:
 - o Suite 450: 8,336 RSF (Divisible)
 - o Suite 350: 1,579 RSF

Kirk Kelly

Principal, Office
(817) 259-3533
Kirk.Kelly@transwestern.com

Blake Grable

Senior Associate, Office
(817)259-3502
Blake.Grable@transwestern.com

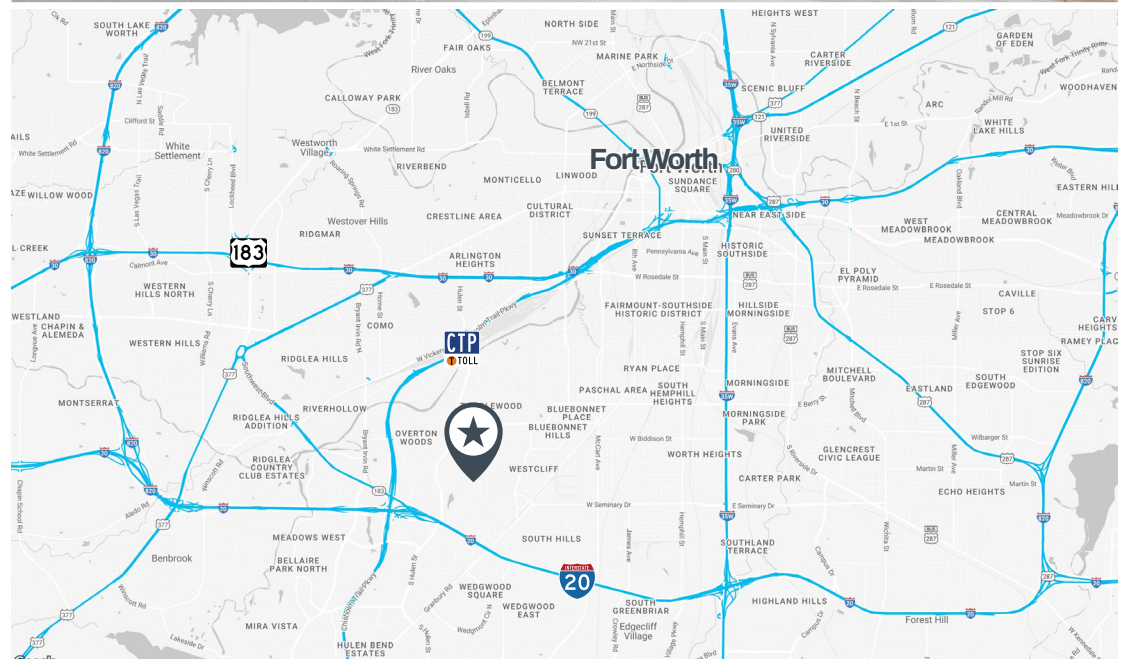
Property Information:

- 150,000 SF Class A office building located in
- Southwest Fort Worth
- Located just north of I-20 off Hulen St
- Free Unreserved Surface and Structured Parking
- 3:1,000 SF Parking Ratio
- State of the Art Fitness Center
- 24/7 Card Key Access & Onsite Security free for tenants



Lease Information:

- Available Suites:
 - o Suite 450: 8,336 RSF (Divisible)
 - o Suite 350: 1,579 RSF
- Rate: \$30.00 PSF Full Service



Kirk Kelly

Principal, Office
(817) 259-3533
Kirk.Kelly@transwestern.com

Blake Grable

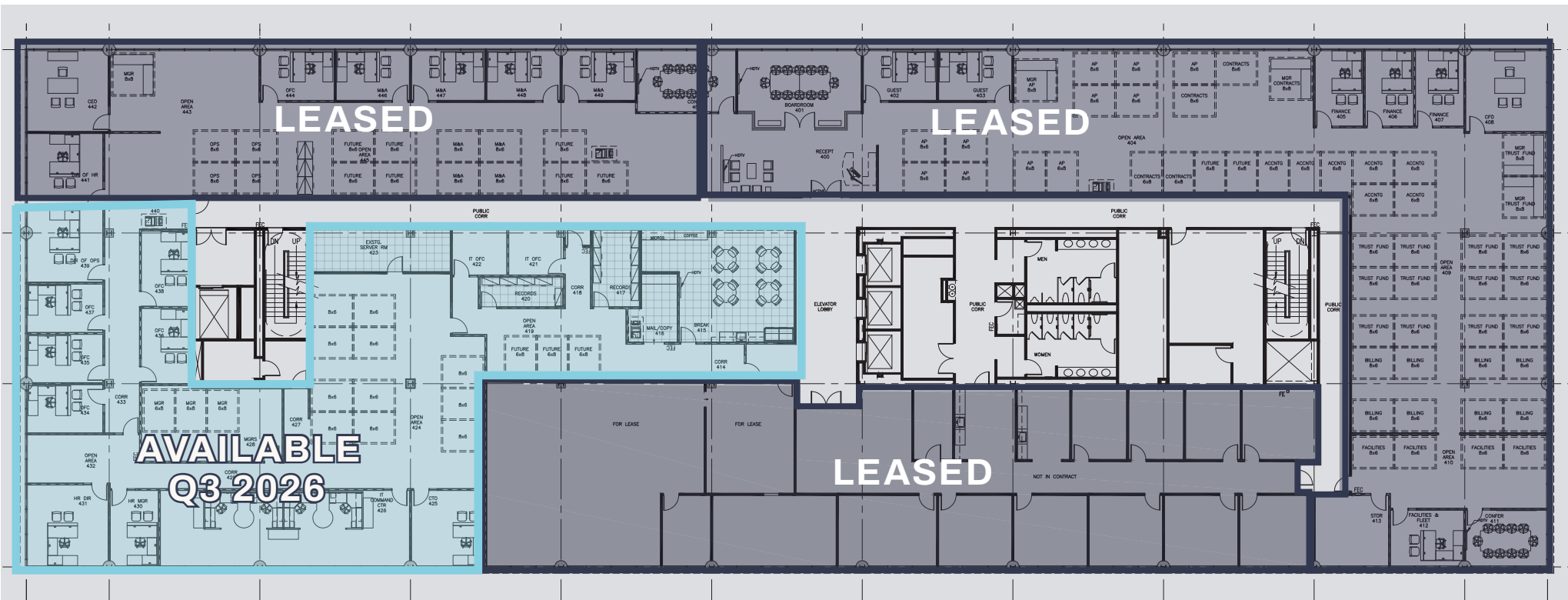
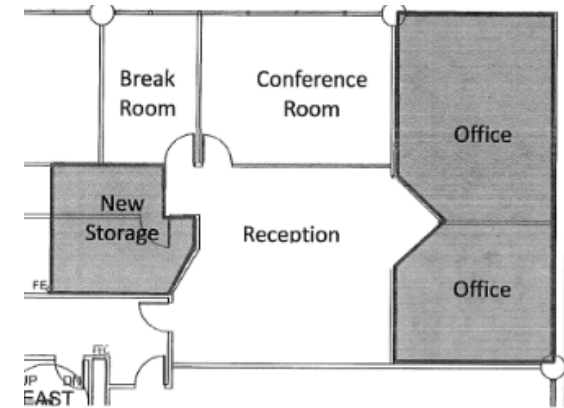
Senior Associate, Office
(817)259-3502
Blake.Grable@transwestern.com



Floor Plan

SUITE # 450 • 8,336 RSF (Divisible)

SUITE # 350 • 1,579 RSF



Kirk Kelly
Principal, Office
(817) 259-3533
Kirk.Kelly@transwestern.com

Blake Grable
Senior Associate, Office
(817)259-3502
Blake.Grable@transwestern.com

TENANT AMENITIES

4800 Overton Plaza Fort Worth, TX 76109



Kirk Kelly

Principal, Office
(817) 259-3533
Kirk.Kelly@transwestern.com

Blake Grable

Senior Associate, Office
(817)259-3502
Blake.Grable@transwestern.com



Get in Touch

Kirk Kelly

Principal, Office
(817) 259-3533
Kirk.Kelly@transwestern.com

Blake Grable

Senior Associate, Office
(817)259-3502
Blake.Grable@transwestern.com