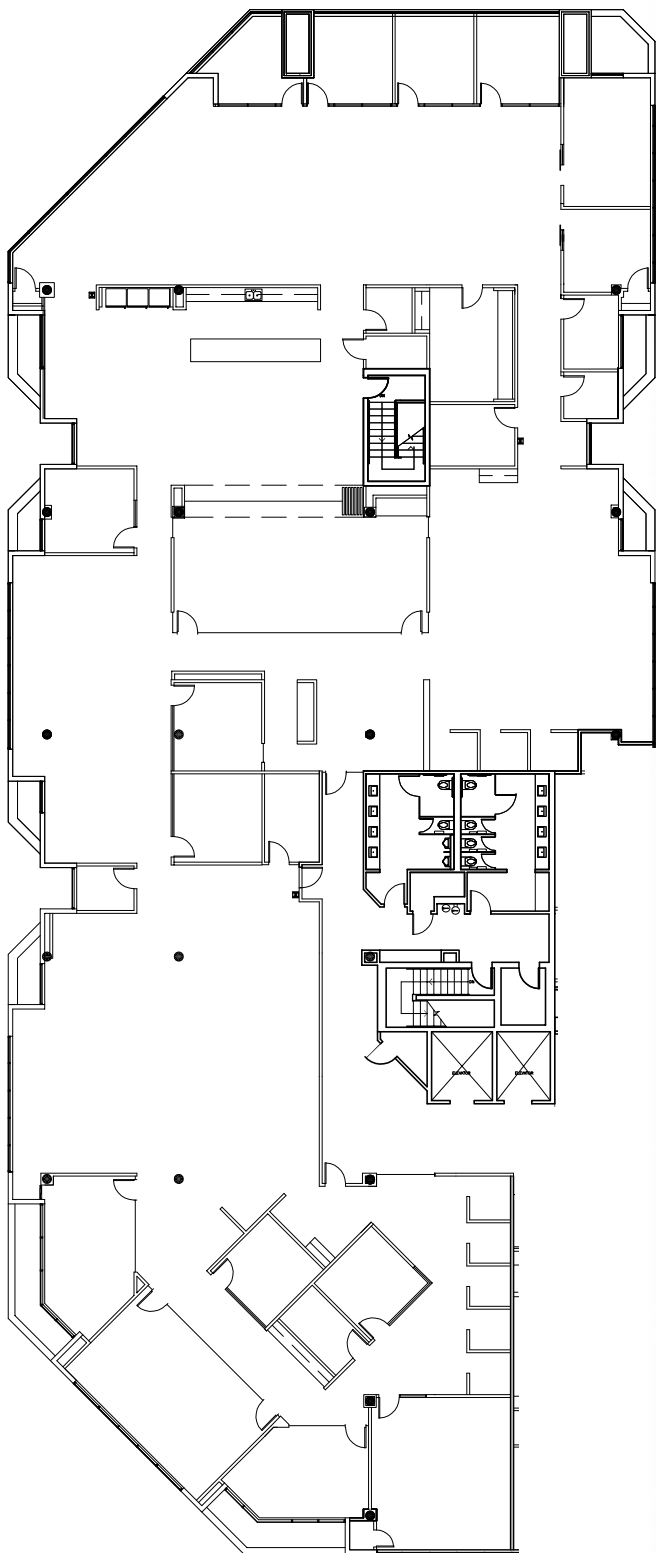


# 4110 N SCOTTSDALE ROAD

**Plug & Play Sublease: Suite 300 ±18,491 SF**  
**Divisible to ±5,000 SF**





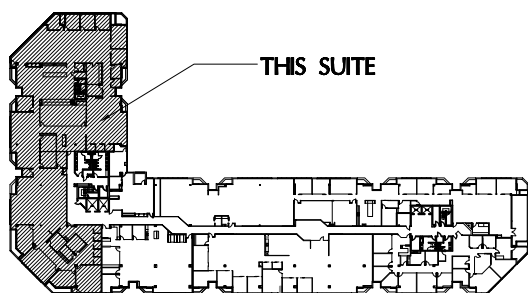


**SUITE 300: ±18,491 SF**

**\$38 PSF Full Service**

### SUITE HIGHLIGHTS

- ±18,491 SF: Divisible to ±5,000 SF
- 107 cubicles
- 5 “focus” cubes
- 4 furnished offices
- 12 furnished conference rooms
- 1 large kitchen/break room with open seating space
- 1 “quiet room” with a couch and small desk
- Game room with game equipment
- Whiskey room with seating
- Prominent Building Signage Potential
- Availability: Immediate



**KEY PLAN-THIRD FLOOR**

N.T.S.



**VIRTUAL  
TOUR**

**WEST  
SIDE**

**EAST  
SIDE**



# 4110 N SCOTTSDALE ROAD

FASHION SQUARE

THE WATERFRONT

ARTS DISTRICT  
(5th Avenue Area)

ENTERTAINMENT  
DISTRICT

SCOTTSDALE ROAD

## OLD TOWN SCOTTSDALE AMENITIES

- More than 90 restaurants, bars and nightlife venues within walking distance

4110 N SCOTTSDALE ROAD

INDIAN SCHOOL ROAD







**SCOTT BAUMGARTEN**

Senior Vice President

602 386 1187

[scott.baumgarten@transwestern.com](mailto:scott.baumgarten@transwestern.com)

**JUSTIN HIMELSTEIN**

Senior Vice President

602 695 4262

[justin.himelstein@transwestern.com](mailto:justin.himelstein@transwestern.com)



**TRANSWESTERN<sup>®</sup>**

2501 E. Camelback Rd, Suite 1  
Phoenix, AZ 85016