



TRANSWESTERN

REAL ESTATE
SERVICES



ARBOR LAKES BUILDING 11

MAPLE GROVE | OFFICE SPACE FOR LEASE

BRYAN BELTRAND CCIM | 612.359.1616
bryan.beltrand@transwestern.com

PROPERTY OVERVIEW

Arbor Lakes - Building 11

TRANSWESTERN

REAL ESTATE
SERVICES



PROPERTY DETAILS

Address: 7835 Main Street | Maple Grove, MN

Building Size: 18,982 sf

of Floors: 2

Year Built: 1999

Parking: Ample surface space



FOR LEASE

Suite 215: 1,164 rsf **Suite 240:** 2,323 rsf

Gross Rental Rates: \$29.00 psf



HIGHLIGHTS

- Class A finishes
- Building signage opportunity
- Entire building can be made available
- Located near many retail amenities



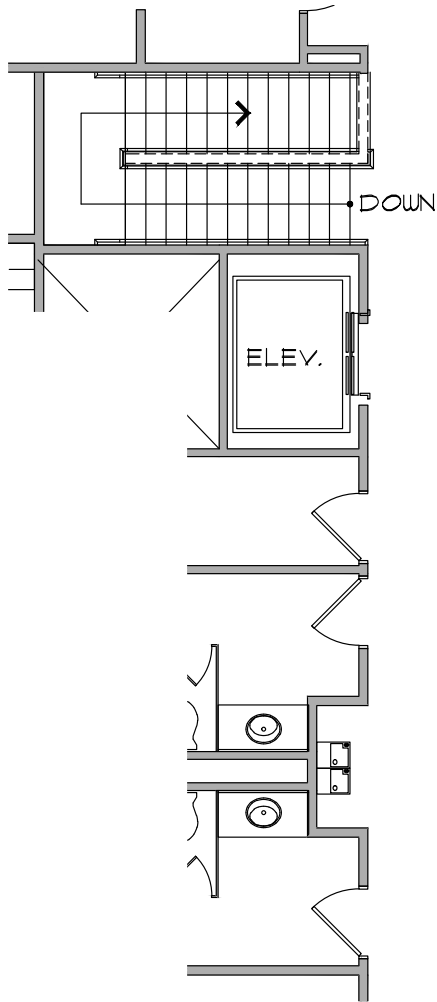
LEASING INFORMATION:

Bryan Beltrand | 612.359.1616 | bryan.beltrand@transwestern.com

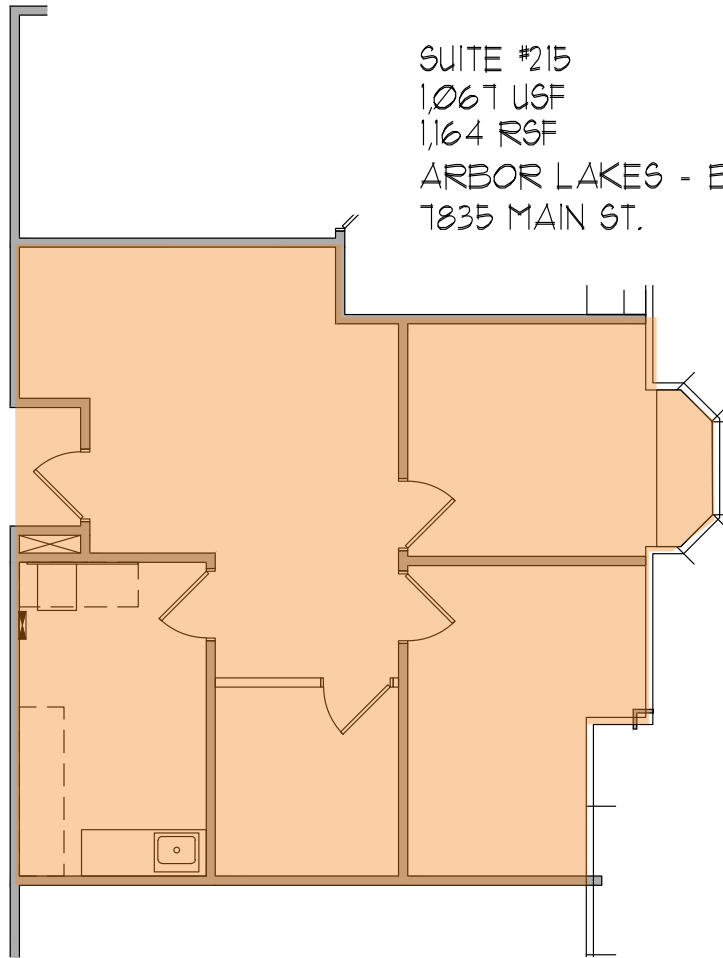
The information provided herein was obtained from sources believed reliable; however, Transwestern makes no guarantees, warranties or representations as to the completeness of accuracy thereof. The presentation of this property is submitted subject to errors, omissions, change of price or conditions, prior to sale or lease, or withdrawal without notice. Copyright © 2020 Transwestern.

SECOND FLOOR PLAN | 215

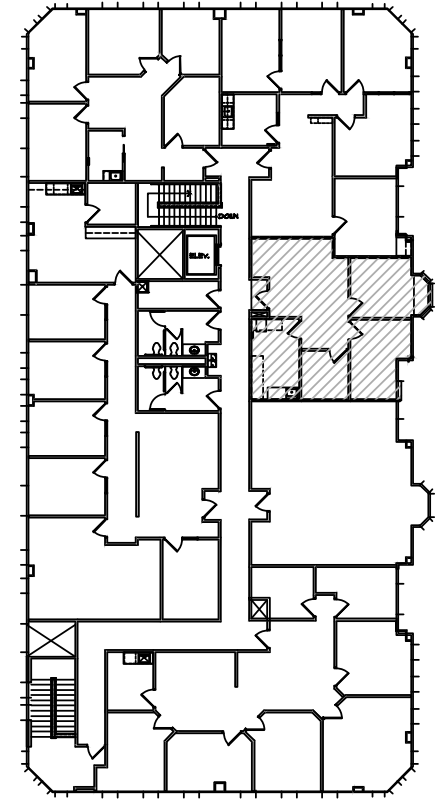
Arbor Lakes - 7835 Main Street



SUITE #215
1,067 USF
1,164 RSF
ARBOR LAKES - BLDG 11
7835 MAIN ST.



SECOND FLOOR
KEY PLAN

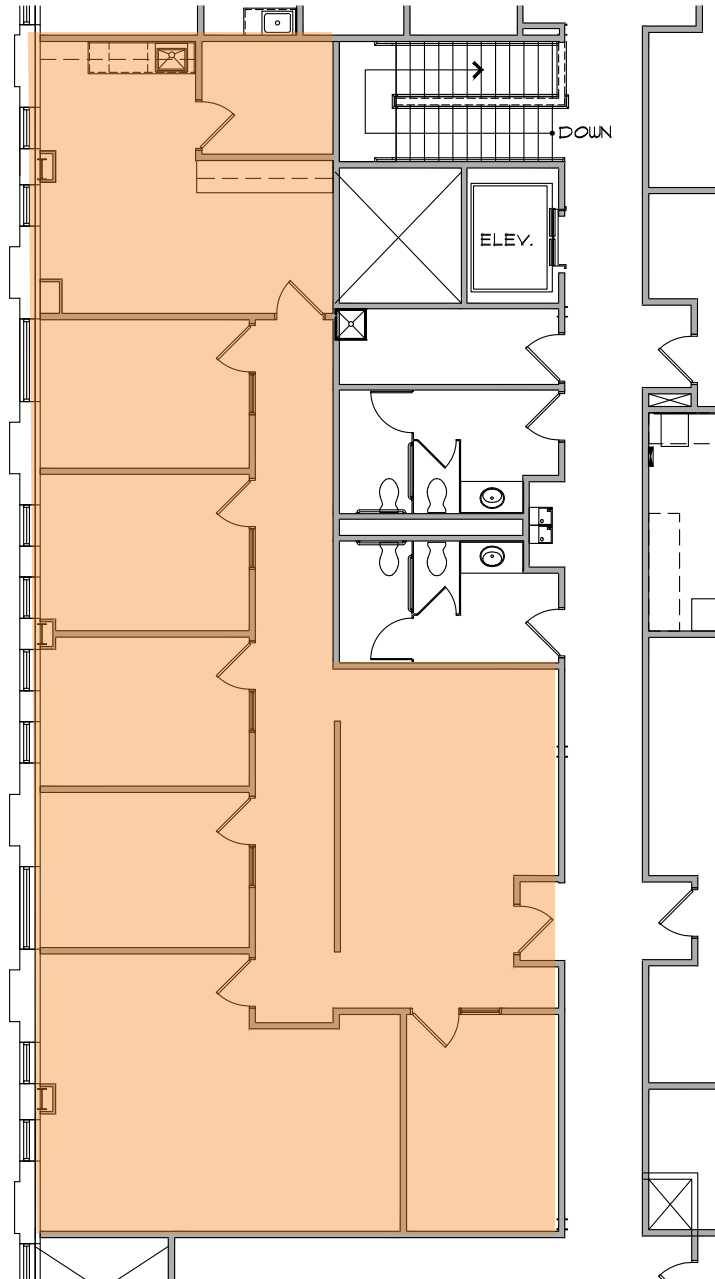


SUITE 215
1,164 rsf

Bryan Beltrand | 612.359.1616
bryan.beltrand@transwestern.com

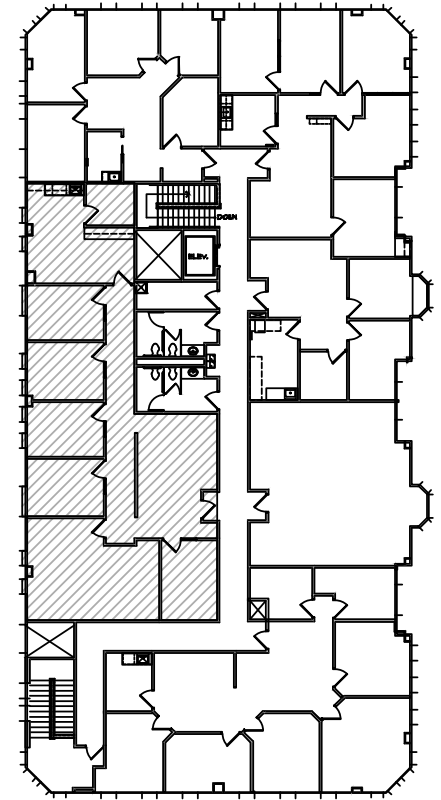
SECOND FLOOR PLAN | 240

Arbor Lakes - 7835 Main Street



SUITE #240
2,010 USF
2,323 RSF
ARBOR LAKES - BLDG 11
7835 MAIN ST.

SECOND FLOOR
KEY PLAN



SUITE 240
2,323 rsf

Bryan Beltrand | 612.359.1616
bryan.beltrand@transwestern.com