



TRANSWESTERN

REAL ESTATE
SERVICES

PLYMOUTH PROFESSIONAL II

MEDICAL/OFFICE SPACE FOR LEASE

CHAD ANVARY | 612.359.1642 - BRYAN BELTRAND | 612.359.1616

PROPERTY OVERVIEW

Plymouth Professional II



PROPERTY DETAILS

Address:	9800 Rockford Rd Plymouth, MN 55442
Size:	7,700 sf
# of Floors	1
Year Built:	1993
Parking:	40 surface spaces



FOR LEASE

Suite 100:	5,212 rsf
Suite 200:	769 rsf
Asking Rent:	\$16.00 psf Net
2022 Ops & Taxes:	\$11.50 psf Total (\$6.22 psf Ops + \$5.28 psf Taxes)



HIGHLIGHTS

- Building exterior and pylon signage available
- Great exposure and easy access to Rockford Rd & Hwy 169
- Located on highly visible corner
- Medical/Office building with ample surface parking



LEASING INFORMATION:

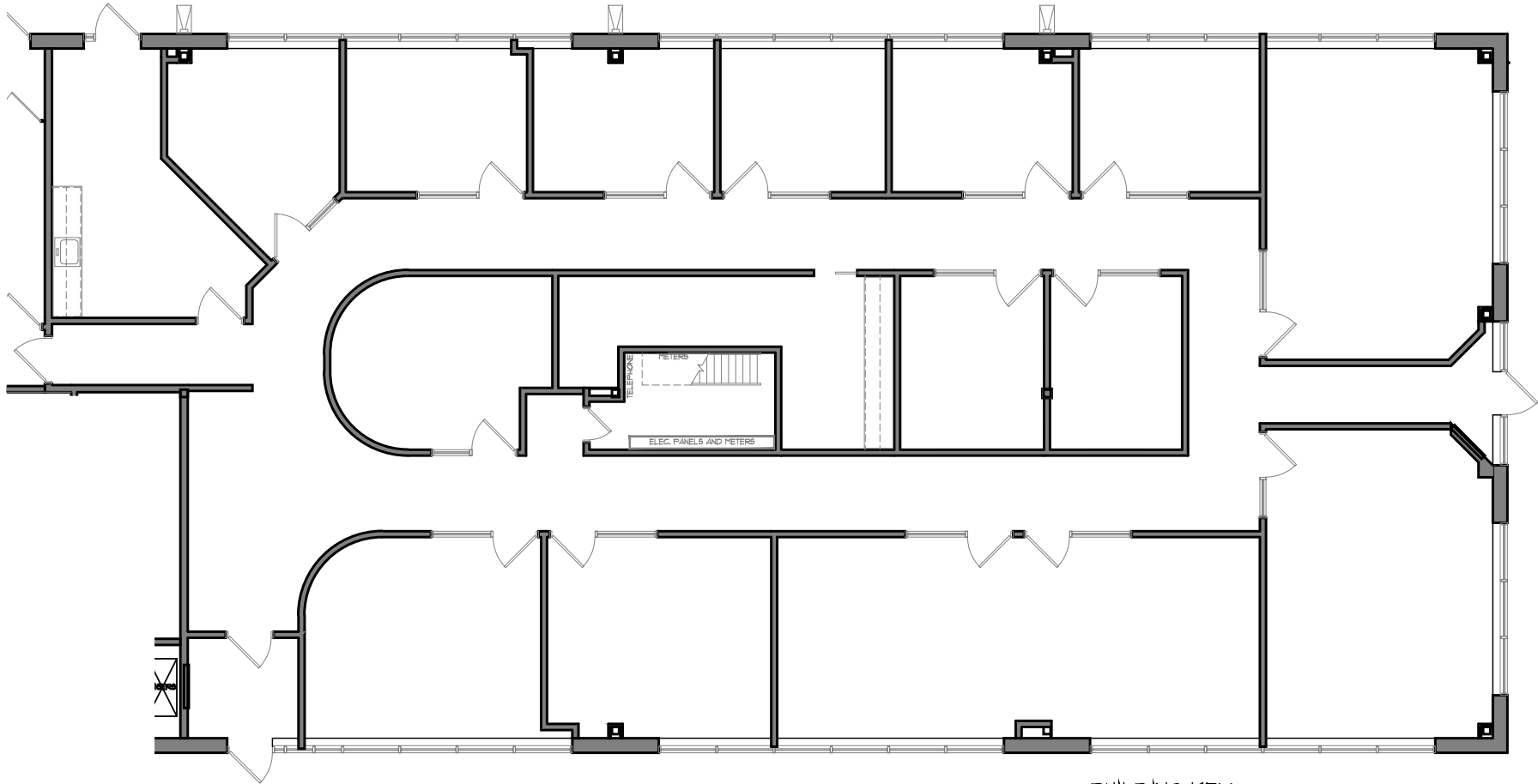
Chad Anvary | 612.359.1642 | chad.anvary@transwestern.com

Bryan Beltrand | 612.359.1616 | bryan.beltrand@transwestern.com

The information provided herein was obtained from sources believed reliable; however, Transwestern makes no guarantees, warranties or representations as to the completeness of accuracy thereof. The presentation of this property is submitted subject to errors, omissions, change of price or conditions, prior to sale or lease, or withdrawal without notice.
Copyright © 2020 Transwestern.

FLOOR PLAN | SUITE 100

Plymouth Professional II



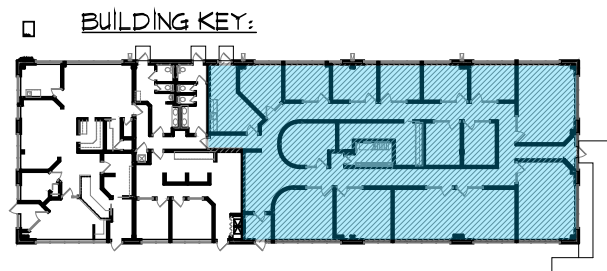
SUITE 100

5,212 rsf

LEASING INFORMATION:

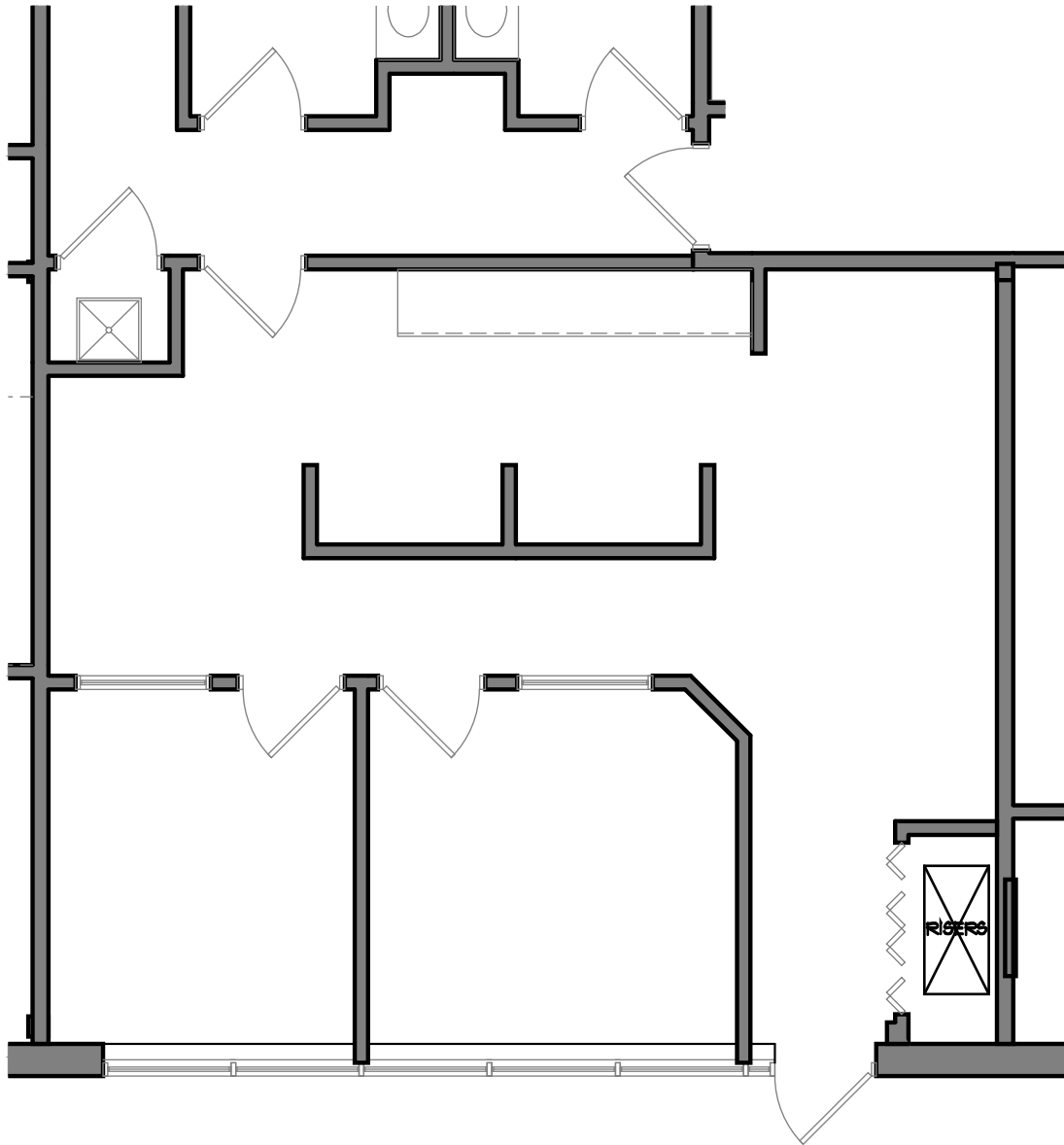
Chad Anvary | 612.359.1642
chad.anvary@transwestern.com

Bryan Beltrand | 612.359.1616
bryan.beltrand@transwestern.com

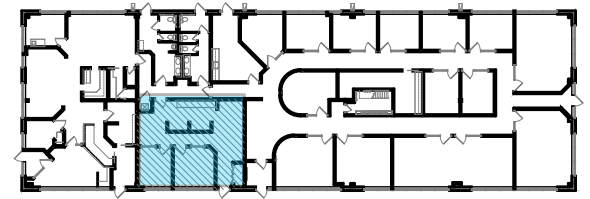


FLOOR PLAN | SUITE 200

Plymouth Professional II



BUILDING KEY:



SUITE 200

769 rsf

LEASING INFORMATION:

Chad Anvary | 612.359.1642
chad.anvary@transwestern.com

Bryan Beltrand | 612.359.1616
bryan.beltrand@transwestern.com