

**FOR LEASE 18,900 SF OFFICE / WAREHOUSE**

 **TRANSWESTERN**

5365 W. Sam Houston Parkway N | **Suite 490** | Houston, TX 77041

# PARK 8 PLACE

E I G H T



## CONTACTS

**JUDE FILIPPONE**

+1 713 270 3318

[jude.filippone@transwestern.com](mailto:jude.filippone@transwestern.com)

**BRIAN GAMMILL**

+1 713 270 3321

[brian.gammill@transwestern.com](mailto:brian.gammill@transwestern.com)

Owned by

**BUCHANAN STREET**  
PARTNERS, L.P.

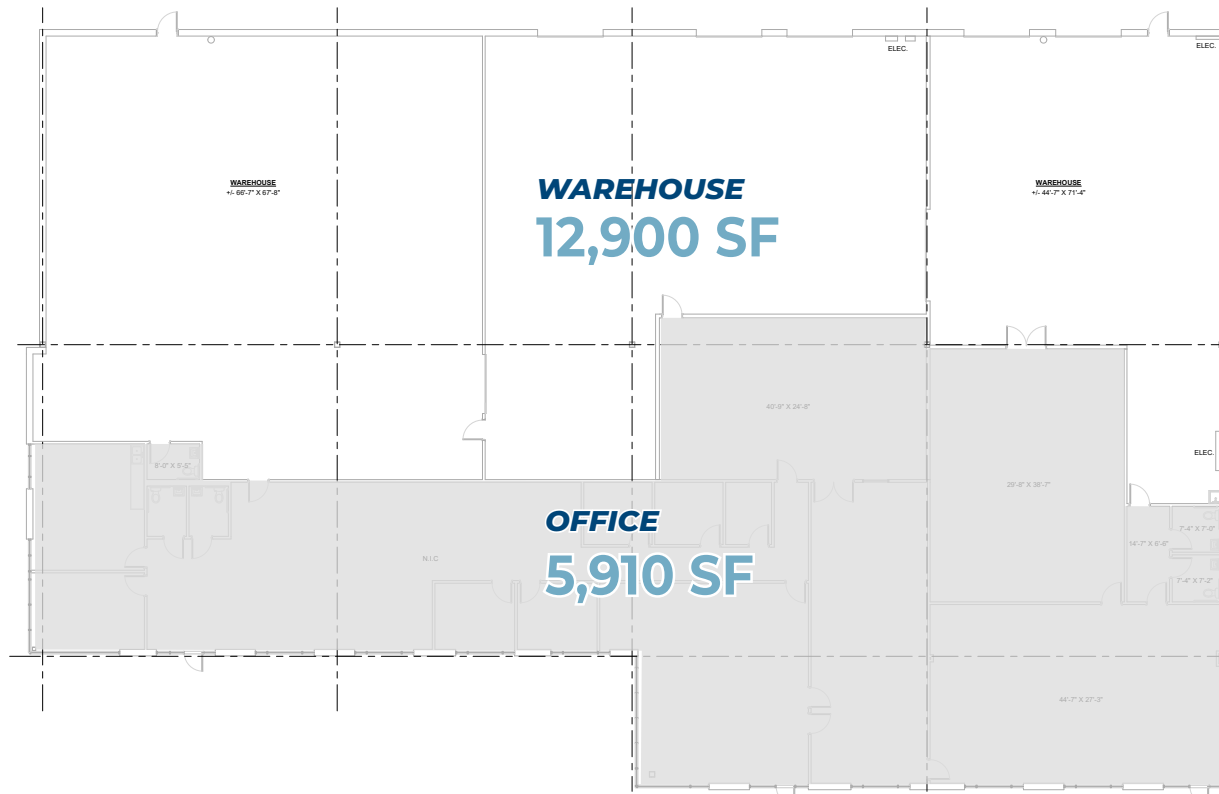


## FLOOR PLAN - Option 1 | 18,900 SF

# PARK 8 PLACE

## E I G H T

5365 W. Sam Houston Parkway N | Suite 490 | Houston, TX 77041



### PREMIUM END CAP SPACE

19'↑

Clear Height



Master Planned  
Environment



Two (2) Ramps



Excellent Beltway  
Visibility



One (1)  
Semi-Dock Door  
(1 Dock High Well)



Outstanding Visibility  
and Corporate Identity



Rear Load  
Configuration



Concrete Tiltwall  
Construction



Fully  
Sprinklered



Institutional  
Ownership

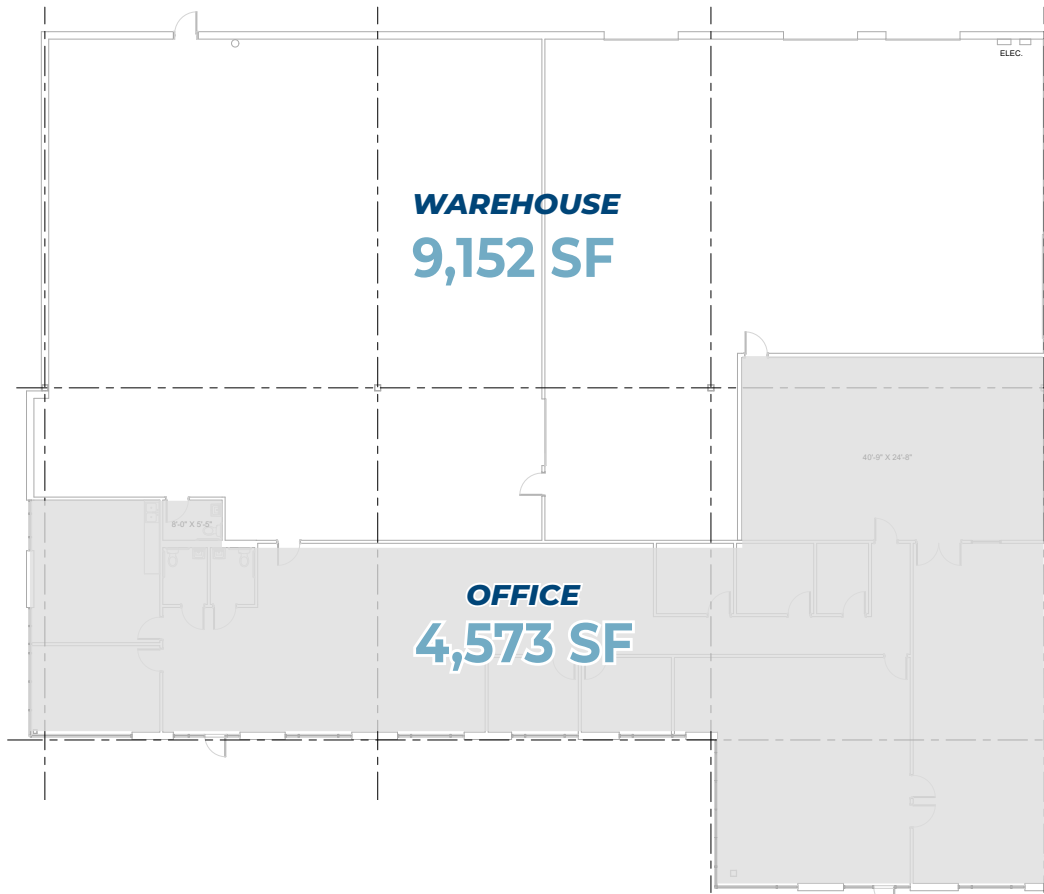


## FLOOR PLAN - Option 2 | 13,725 SF

# PARK 8 PLACE

## E I G H T

5365 W. Sam Houston Parkway N | Suite 490 | Houston, TX 77041



### PREMIUM END CAP SPACE

19'

Clear Height



Master Planned  
Environment



One (1) Ramp



Excellent Beltway  
Visibility



One (1)  
Semi-Dock Door  
(1 Dock High Well)



Outstanding Visibility  
and Corporate Identity



Rear Load  
Configuration



Concrete Tiltwall  
Construction



Fully  
Sprinklered



Institutional  
Ownership

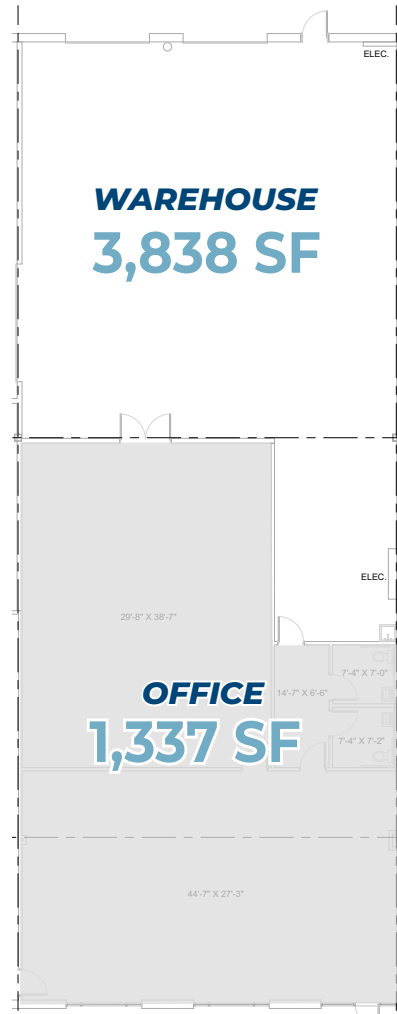


## FLOOR PLAN - Option 3 | 5,175 SF

# PARK 8 PLACE

## EIGHT

5365 W. Sam Houston Parkway N | Suite 490 | Houston, TX 77041



### PREMIUM END CAP SPACE

**19'**  
Clear Height

  
Master Planned  
Environment

  
One (1) Ramp


  
Excellent Beltway  
Visibility

  
One (1)  
Dock High Well

  
Outstanding Visibility  
and Corporate Identity

  
Rear Load  
Configuration

  
Concrete Tiltwall  
Construction

  
Fully  
Sprinklered

  
Institutional  
Ownership



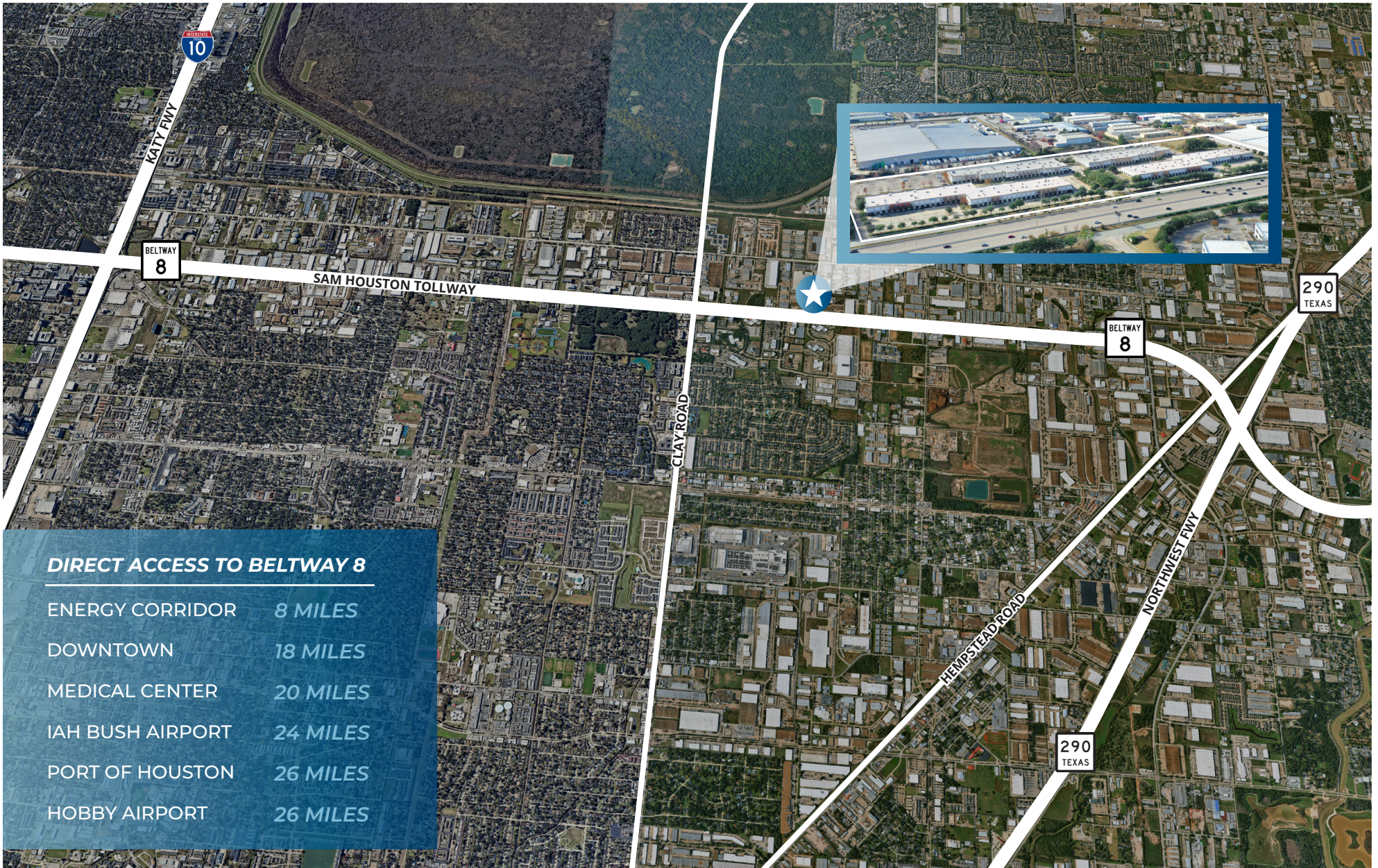
## AERIAL MAP

# PARK 8 PLACE

## EIGHT

### Prime West Houston Location

5365 W. Sam Houston Parkway N | Suite 490 | Houston, TX 77041



#### **DIRECT ACCESS TO BELTWAY 8**

ENERGY CORRIDOR	8 MILES
DOWNTOWN	18 MILES
MEDICAL CENTER	20 MILES
IAH BUSH AIRPORT	24 MILES
PORT OF HOUSTON	26 MILES
HOBBY AIRPORT	26 MILES

# PARK 8 PLACE

EIGHT

SUITE 490 | 18,900 SF

BELTWAY  
8

 **TRANSWESTERN**  
**LEASING CONTACTS**

**JUDE FILIPPONE**  
+1 713 270 3318  
[jude.filippone@transwestern.com](mailto:jude.filippone@transwestern.com)

**BRIAN GAMMILL**  
+1 713 270 3321  
[brian.gammill@transwestern.com](mailto:brian.gammill@transwestern.com)

OWNED BY  
**BUCHANAN STREET**  
PARTNERS, L.P.

The information provided herein was obtained from sources believed reliable; however, Transwestern makes no guarantees, warranties or representations as to the completeness or accuracy thereof. The presentation of this property is submitted subject to errors, omissions, change of price or conditions, prior sale or lease, or withdrawal without notice. Copyright © 2025 Transwestern.