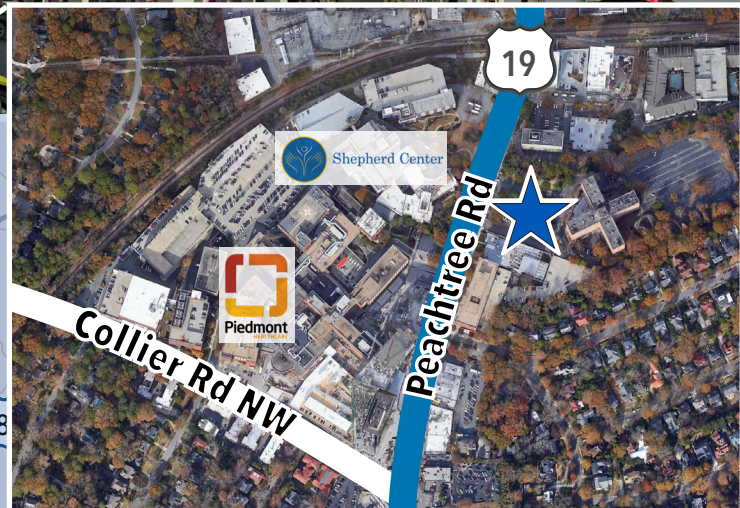


# DARLINGTON MEDICAL CENTER

2021 Peachtree Rd  
Atlanta, GA 30309



## HIGHLIGHTS

- New 75,000 +/- SF Class "A" Medical Office Building
- Directly Across from Piedmont Atlanta Hospital
- No Use Restrictions
- Efficient 15,000 SF Floorplates
- Equity Participation Available for Anchor Tenant
- Signage Opportunities on Peachtree Rd, One of the Busiest Streets in Atlanta
- Covered Drop-Off and Parking with Parking Deck

## FOR MORE INFORMATION, CONTACT:

### STEVE HALL

Senior Managing Director, Transwestern

 404.842.6560

 [steve.hall@transwestern.com](mailto:steve.hall@transwestern.com)

### JOHN V. LOPEZ, CCIM, RPA

Senior Vice President, Transwestern

 404.842.6562

 [john.lopez@transwestern.com](mailto:john.lopez@transwestern.com)

## HEALTHCARE ADVISORY SERVICES



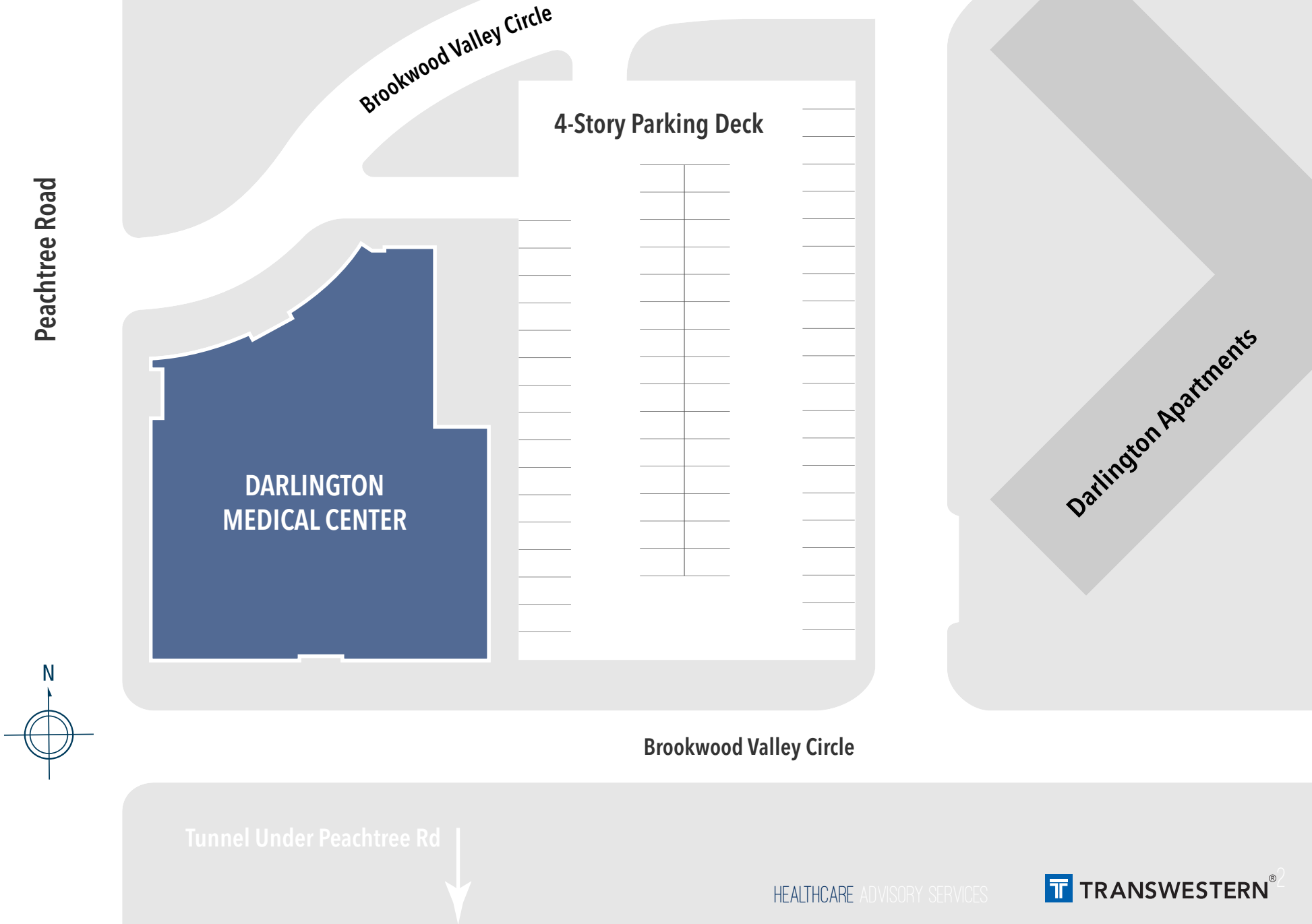
3340 Peachtree Road NE  
Suite 1000  
Atlanta, GA 30326

P: 404.842.6600  
F: 404.842.6601  
[www.transwestern.com](http://www.transwestern.com)



# SITE PLAN

DARLINGTON MEDICAL CENTER  
2021 Peachtree Road NE, Atlanta, GA 30309

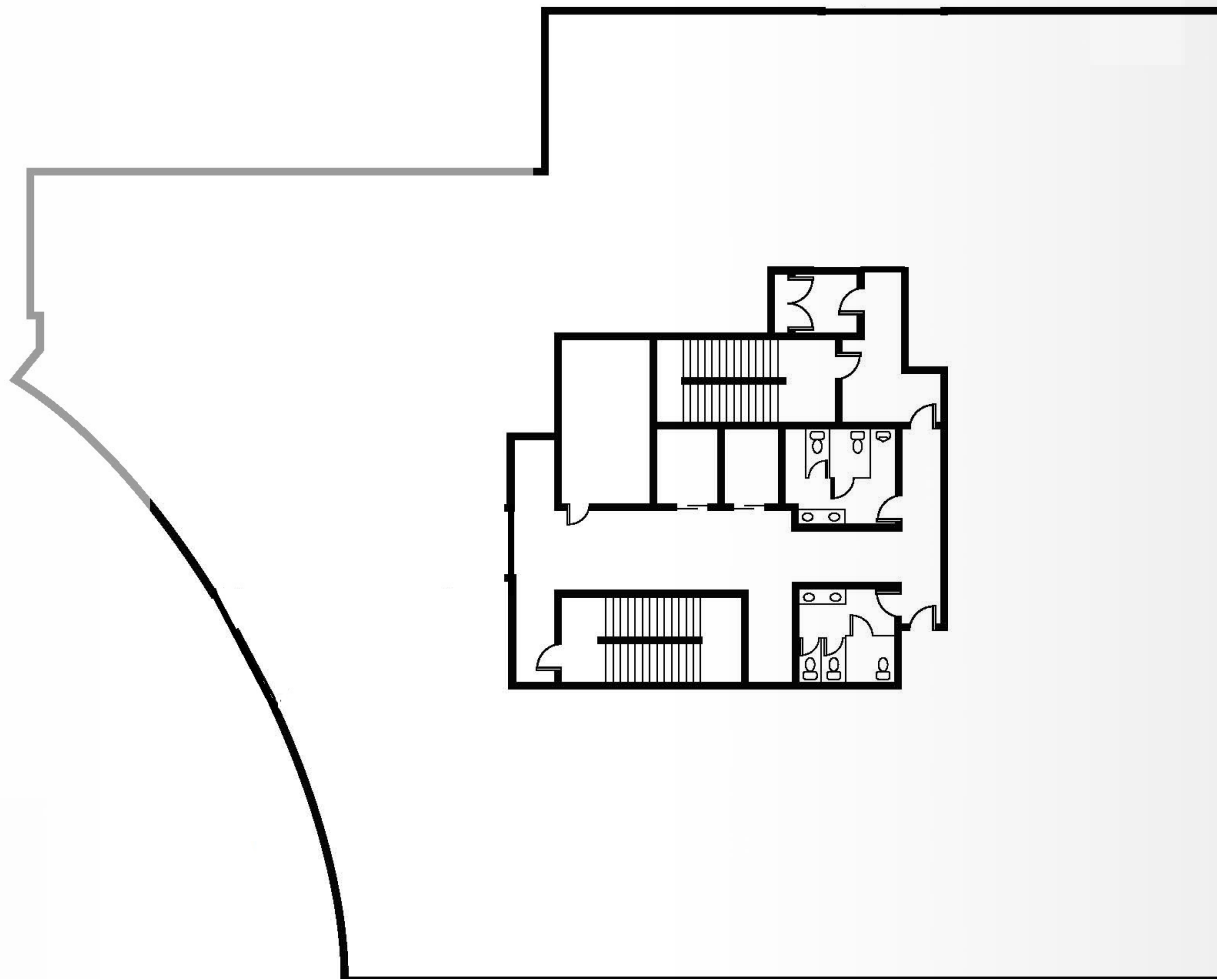


# DARLINGTON MEDICAL CENTER

2021 Peachtree Rd., Atlanta, GA 30309

## TYPICAL FLOORPLATE

5,000 RSF



### JOHN V. LOPEZ, CCIM, RPA

*Senior Vice President, Transwestern*

404.842.6562

[john.lopez@transwestern.com](mailto:john.lopez@transwestern.com)

### STEVE HALL

*Senior Managing Director, Transwestern*

404.842.6560

[steve.hall@transwestern.com](mailto:steve.hall@transwestern.com)

