

MEDLOCK MEDICAL CENTER

11459 Johns Creek Pkwy Johns Creek, GA 30097



**SOUTHEAST
HEALTHCARE
ADVISORY
SERVICES**

STEVE HALL
Senior Managing Director,
Healthcare Advisory Services
404.842.6560
steve.hall@transwestern.com

JOHN V. LOPEZ, CCIM, RPA
Managing Director,
Healthcare Advisory Services
404.842.6562
john.lopez@transwestern.com

BO STUART
Vice President,
Healthcare Advisory Services
404.842.6556
bo.stuart@transwestern.com

MARSH HAZLEHURST
Senior Associate,
Healthcare Advisory Services
404.842.6574
marsh.hazlehurst@transwestern.com





EXECUTIVE SUMMARY



Medical Office Building
3,566 RSF - 1st Floor Suite
Available for Lease



Built in
2008



Abundant Free Parking
Available

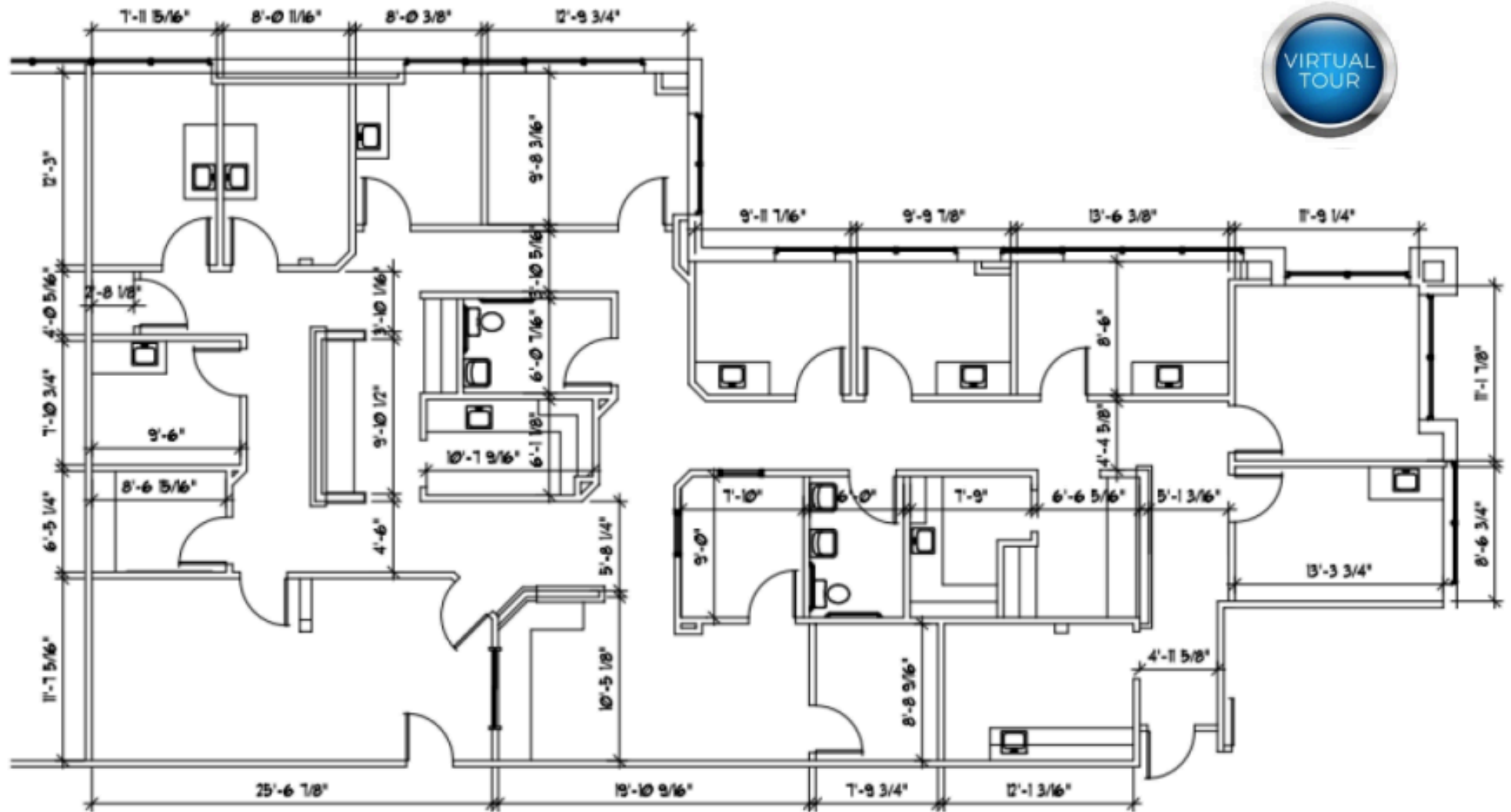


Established Medical
Ecosystem



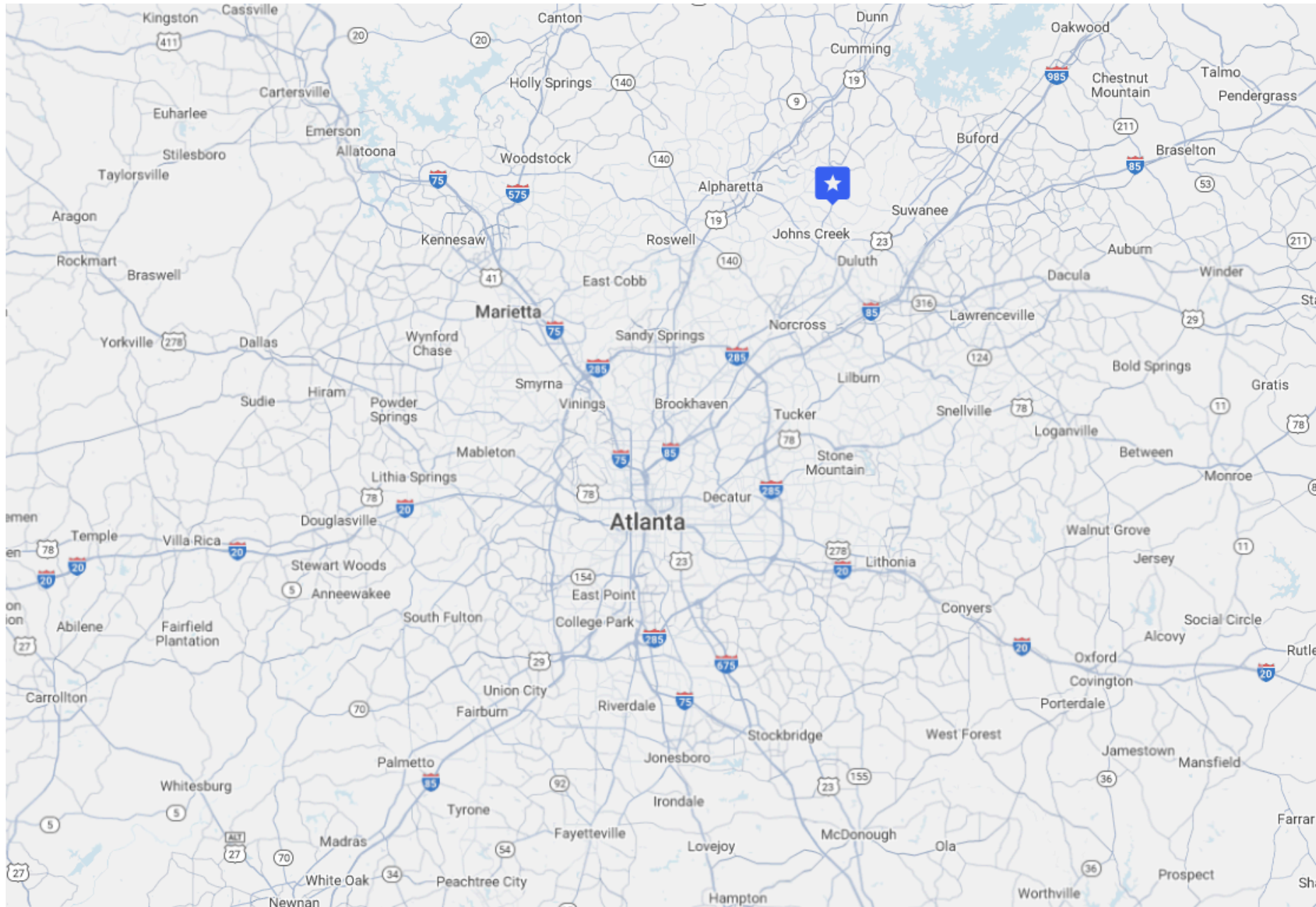
Excellent Access
and Visibility

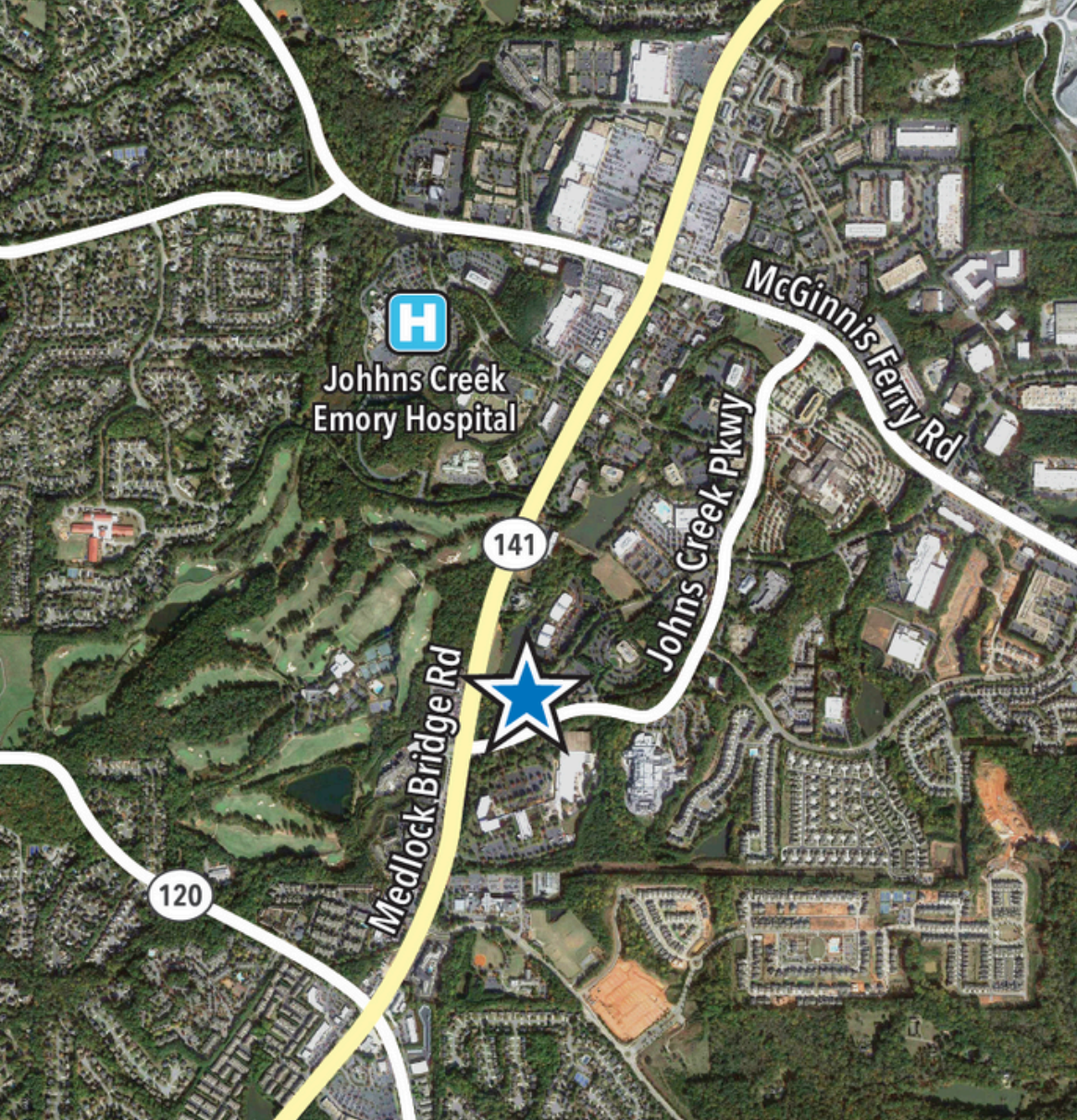
1st Floor - Suite 170 - 3,566RSF





LOCATION MAP





PROXIMITY TO KEY DESTINATIONS



Emory Johns Creek Hospital

3 min | 0.8 mi

Northside Hospital Duluth

12 min | 4.8 mi

Northside Forsyth Hospital

20 min | 10.2 mi

Northside Hospital Gwinnett

28 min | 13.9 mi

Wellstar North Fulton

25 min | 10 mi

Hartsfield-Jackson Atlanta International Airport

50 min | 40.7 mi

Let's do this.



TRANSWESTERN

REAL ESTATE
SERVICES



SOUTHEAST HEALTHCARE ADVISORY SERVICES

STEVE HALL

Senior Managing Director,
Healthcare Advisory Services

404.842.6560

steve.hall@transwestern.com

JOHN V. LOPEZ, CCIM, RPA

Managing Director,
Healthcare Advisory Services

404.842.6562

john.lopez@transwestern.com

BO STUART

Vice President,
Healthcare Advisory Services

404.842.6556

bo.stuart@transwestern.com

MARSH HAZLEHURST

Senior Associate,
Healthcare Advisory Services

404.842.6574

marsh.hazlehurst@transwestern.com