

**MEDICAL
OFFICE**

12,556
TOTAL SF

6,278 RSF
AVAILABLE



TRANSWESTERN

REAL ESTATE
SERVICES

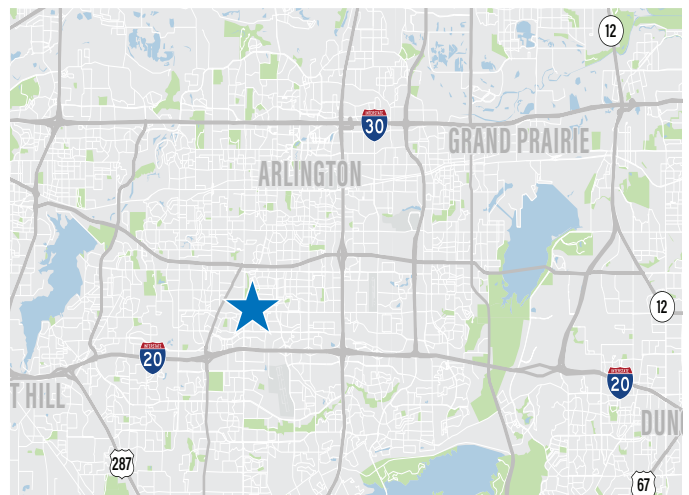
501 RITA LANE

Arlington, Texas 76014



Building Information:

- Adjacent to Medical City of Arlington
- Common area restrooms and waiting area
- Covered patient drop off
- Building signage available
- Convenient surface parking



Leasing Information:

Chris Lipscomb

214.237.5022

chris.lipscomb@transwestern.com

Elliott Newsom

972.361.1118

elliott.newsom@transwestern.com

The information provided herein was obtained from sources believed reliable; however, Transwestern makes no guarantees, warranties or representations as to the completeness of accuracy thereof. The presentation of this property is submitted subject to errors, omissions, change of price or conditions, prior to sale or lease, or withdrawal without notice. Copyright © 2025 Transwestern.

501 RITA LANE

Arlington, Texas 76014

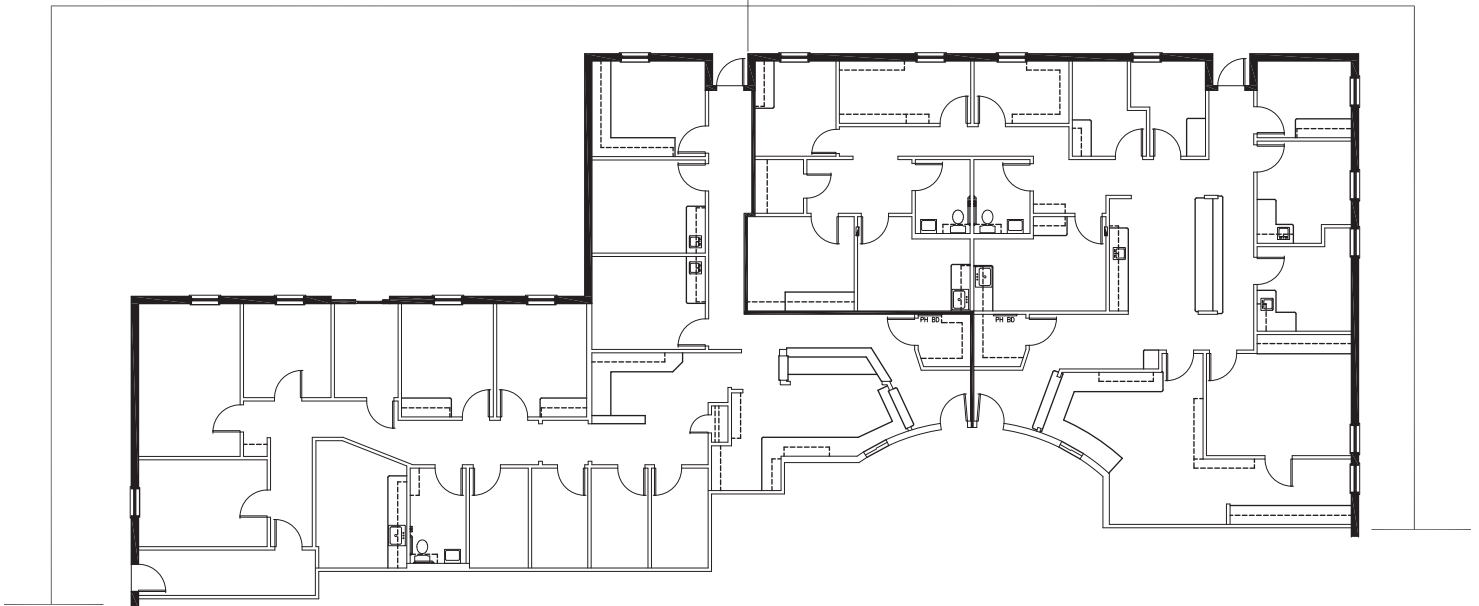


TRANSWESTERN

REAL ESTATE
SERVICES

AVAILABLE
Suite 113
3,238 RSF +/-

AVAILABLE
Suite 105
3,040 RSF +/-



Leasing Information:

Chris Lipscomb

214.237.5022

chris.lipscomb@transwestern.com

Elliott Newsom

972.361.1118

elliott.newsom@transwestern.com

The information provided herein was obtained from sources believed reliable; however, Transwestern makes no guarantees, warranties or representations as to the completeness of accuracy thereof. The presentation of this property is submitted subject to errors, omissions, change of price or conditions, prior to sale or lease, or withdrawal without notice. Copyright © 2025 Transwestern.