

**MEDICAL  
OFFICE  
FOR LEASE**

60,000 SF

CLASS A  
MEDICAL  
OFFICE SPACE

EXCELLENT  
TENANT MIX



# KINGWOOD MEDICAL ARTS

350 KINGWOOD MEDICAL DRIVE | KINGWOOD, TX 77339



**Leasing Information:**

**Sarah Carter | VP**

713.231.1629

[Sarah.Carter@transwestern.com](mailto:Sarah.Carter@transwestern.com)

**Elise Pantazis | Associate**

713.231.1580

[Elise.Pantazis@transwestern.com](mailto:Elise.Pantazis@transwestern.com)

The information provided herein was obtained from sources believed reliable; however, Transwestern makes no guarantees, warranties or representations as to the completeness of accuracy thereof. The presentation of this property is submitted subject to errors, omissions, change of price or conditions, prior to sale or lease, or withdrawal without notice.  
Copyright © 2023 Transwestern.



**MEDICAL  
OFFICE  
FOR LEASE**

60,000 SF

CLASS A  
MEDICAL  
OFFICE SPACE

EXCELLENT  
TENANT MIX



# KINGWOOD MEDICAL ARTS

350 KINGWOOD MEDICAL DRIVE | KINGWOOD, TX 77339



## About the Property:

- Located at the corner of Kingwood Medical Dr. and Professional Dr. across from Kingwood Medical Center
- Owned by Healthpeak, Inc.
- Excellent Tenant Mix including:
  - Memorial Hermann Surgical Hospital
  - TOPS Comprehensive Breast Center
  - Care for Women
  - Retina Consultants of Houston
  - Northwoods Urology
  - Houston Fertility Institute

## Building Specs:

- Class A Medical Office Building
- 60,000 Square Feet, 3 Story
- Parking Ratio: 3.58:1,000
- Free Parking
- Dedicated Patient Parking Near Entrance

## Availability:

- 1,441 SF - 2,741 SF suites available
- Please Call for Rates

### Leasing Information:

**Sarah Carter | VP**

713.231.1629

[Sarah.Carter@transwestern.com](mailto:Sarah.Carter@transwestern.com)

**Elise Pantazis | Associate**

713.231.1580

[Elise.Pantazis@transwestern.com](mailto:Elise.Pantazis@transwestern.com)

The information provided herein was obtained from sources believed reliable; however, Transwestern makes no guarantees, warranties or representations as to the completeness of accuracy thereof. The presentation of this property is submitted subject to errors, omissions, change of price or conditions, prior to sale or lease, or withdrawal without notice. Copyright © 2023 Transwestern.

# KINGWOOD MEDICAL ARTS

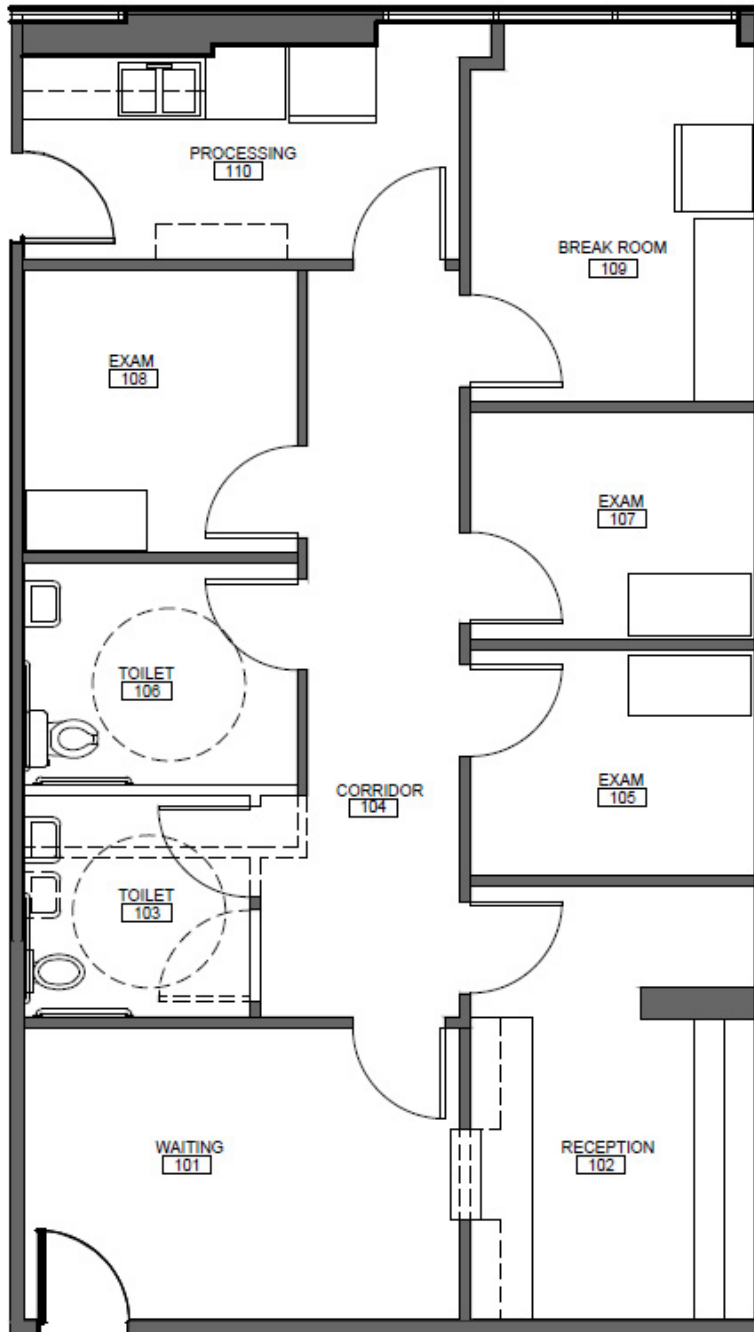
350 KINGWOOD MEDICAL DRIVE | KINGWOOD, TX 77339

Floor Plan | Suite 130 | 1,441 SF



TRANSWESTERN

REAL ESTATE  
SERVICES



## Leasing Information:

**Sarah Carter | VP**

713.231.1629

Sarah.Carter@transwestern.com

The information provided herein was obtained from sources believed reliable; however, Transwestern makes no guarantees, warranties or representations as to the completeness of accuracy thereof. The presentation of this property is submitted subject to errors, omissions, change of price or conditions, prior to sale or lease, or withdrawal without notice. Copyright © 2023 Transwestern.



# KINGWOOD MEDICAL ARTS

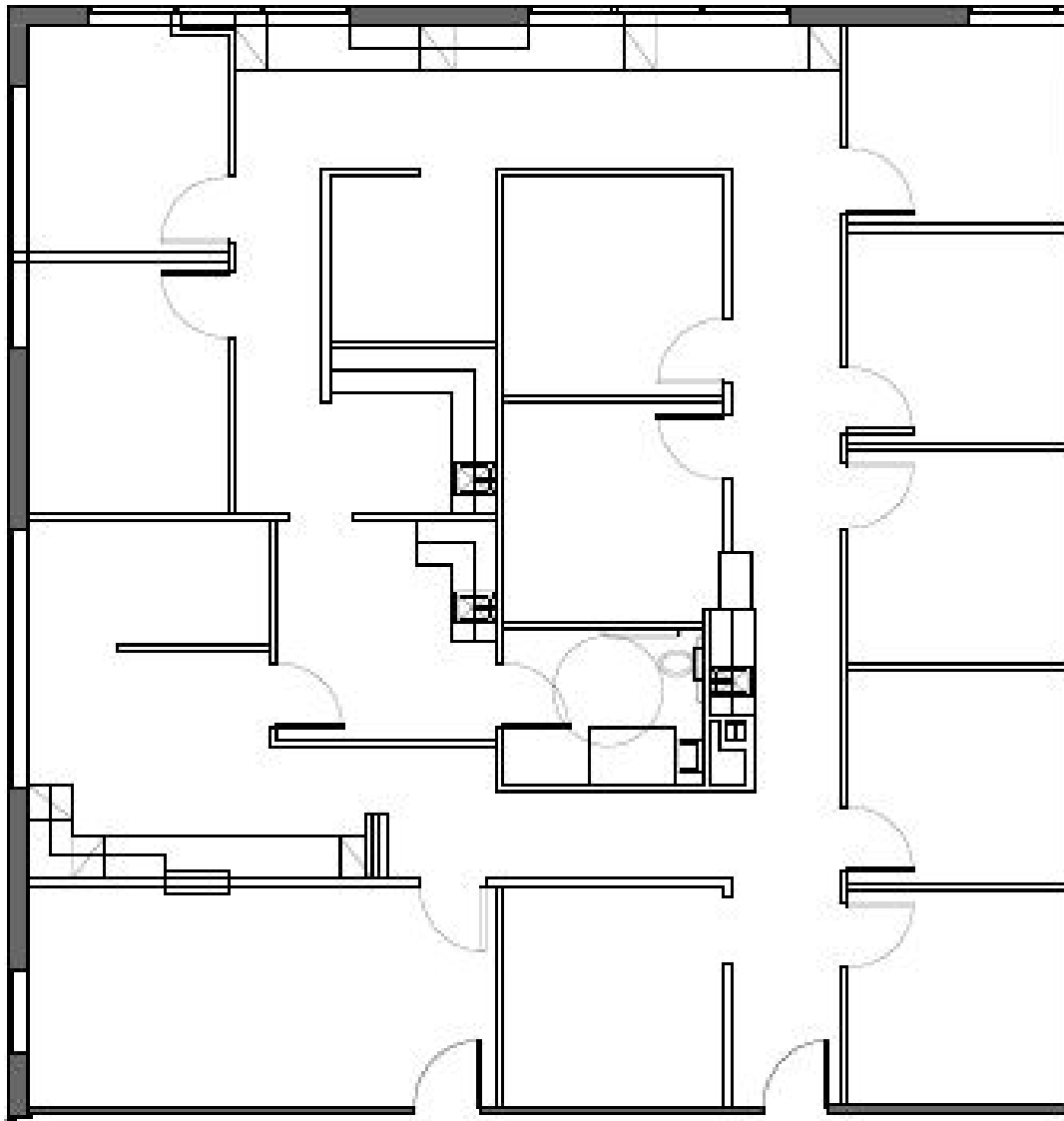
350 KINGWOOD MEDICAL DRIVE | KINGWOOD, TX 77339

Floor Plan | Suite 150 | 2,741 SF



TRANSWESTERN

REAL ESTATE  
SERVICES



## Leasing Information:

**Sarah Carter | VP**

713.231.1629

Sarah.Carter@transwestern.com

The information provided herein was obtained from sources believed reliable; however, Transwestern makes no guarantees, warranties or representations as to the completeness of accuracy thereof. The presentation of this property is submitted subject to errors, omissions, change of price or conditions, prior to sale or lease, or withdrawal without notice. Copyright © 2023 Transwestern.



# KINGWOOD MEDICAL ARTS

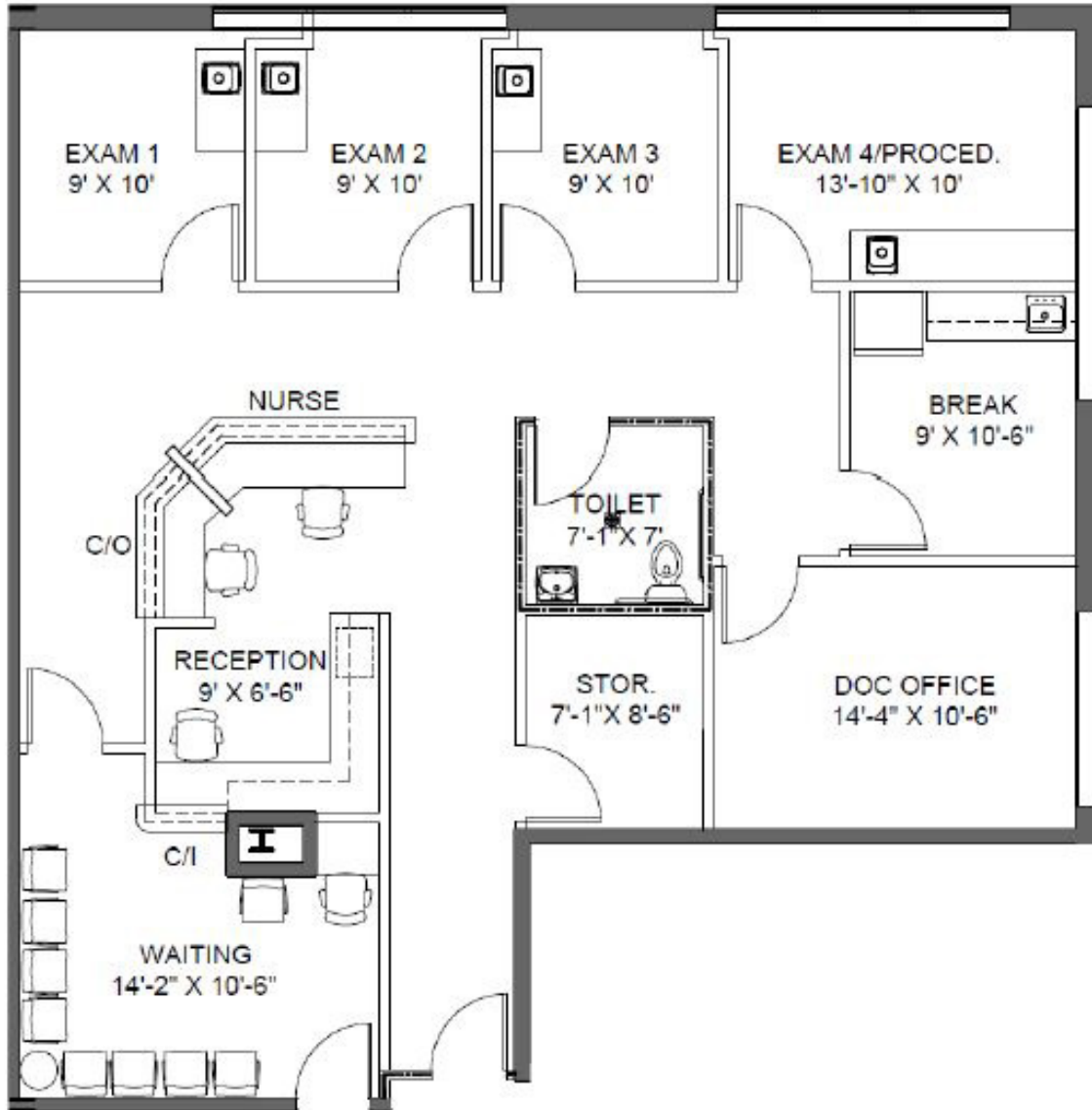
350 KINGWOOD MEDICAL DRIVE | KINGWOOD, TX 77339

Floor Plan | Suite 230 | 1,927 SF



TRANSWESTERN

REAL ESTATE  
SERVICES



## Leasing Information:

**Sarah Carter** | VP

713.231.1629

Sarah.Carter@transwestern.com

The information provided herein was obtained from sources believed reliable; however, Transwestern makes no guarantees, warranties or representations as to the completeness of accuracy thereof. The presentation of this property is submitted subject to errors, omissions, change of price or conditions, prior to sale or lease, or withdrawal without notice. Copyright © 2023 Transwestern.

