

OFFICE  
LEASE

133,874 SF

CLASS A  
OFFICE SPACE



  
TRANSWESTERN  
REAL ESTATE  
SERVICES

# TIMBERLANDS III

5445 CORPORATE DRIVE | TROY, MI 48098

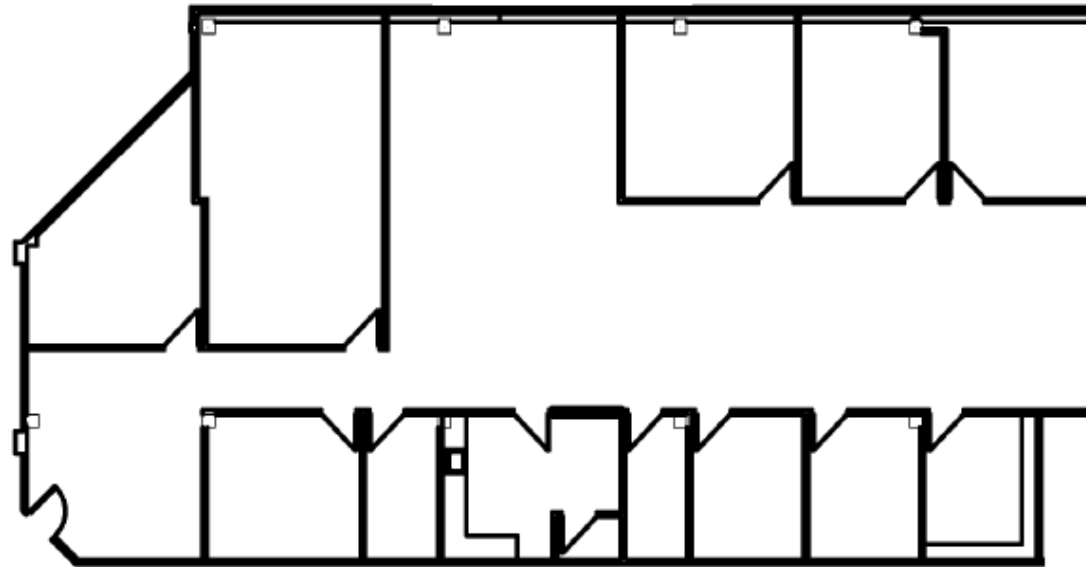
## FLOOR PLAN

SUITE 100 | 4,515 SF

### Leasing Information:

**Bill  
Harvey**  
248.797.9455  
bill.harvey@transwestern.com

**Chuck  
Howard**  
248.821.7772  
charles.howard@transwestern.com



The information provided herein was obtained from sources believed reliable; however, Transwestern makes no guarantees, warranties or representations as to the completeness of accuracy thereof. The presentation of this property is submitted subject to errors, omissions, change of price or conditions, prior to sale or lease, or withdrawal without notice. Copyright © 2020 Transwestern.



NORTH