

# SUITE 1600

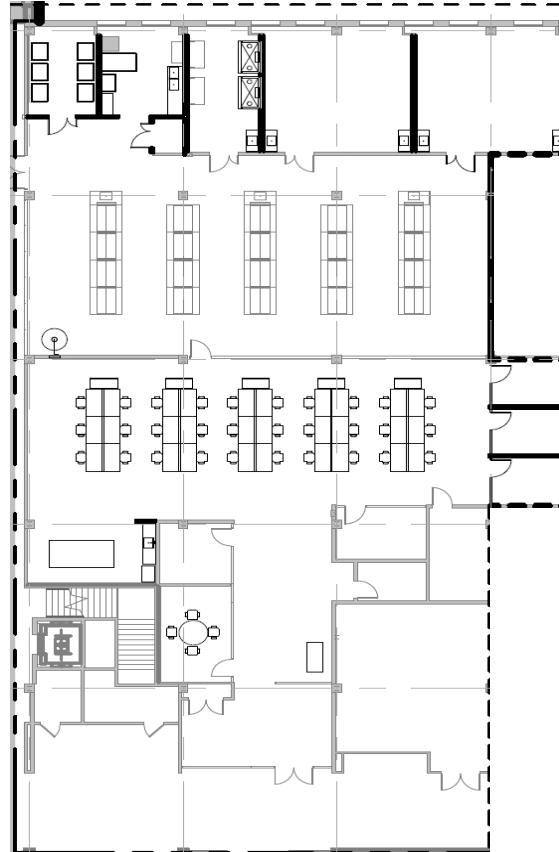
11,005 RSF

TMC | INNOVATION FACTORY



## SPACE FEATURES

- **# of Offices:** 5
- **# of Vent Hoods:** 2 Fume Hoods
- **# of Autoclaves/Specs:** 1
- **# of Open Workstations:** TBD
- **# of Biosafety Cabinets:** 2 deducted 2 recirculating



## LEASING INFORMATION:



Lisa Bovermann  
Senior Vice President  
(832) 443-1282  
Lisa.Bovermann@transwestern.com

Kaitlyn Harp  
Associate  
(409) 673-1022  
Kaitlyn.Harp@transwestern.com

## TMC REAL ESTATE LEASING

2450 Holcombe Blvd, Suite 1700  
Houston, TX 77006  
Leasing@tmc.edu

\* Virtual Tour reflects Suite 1600 & 1610 combined. Ready Q1 2026