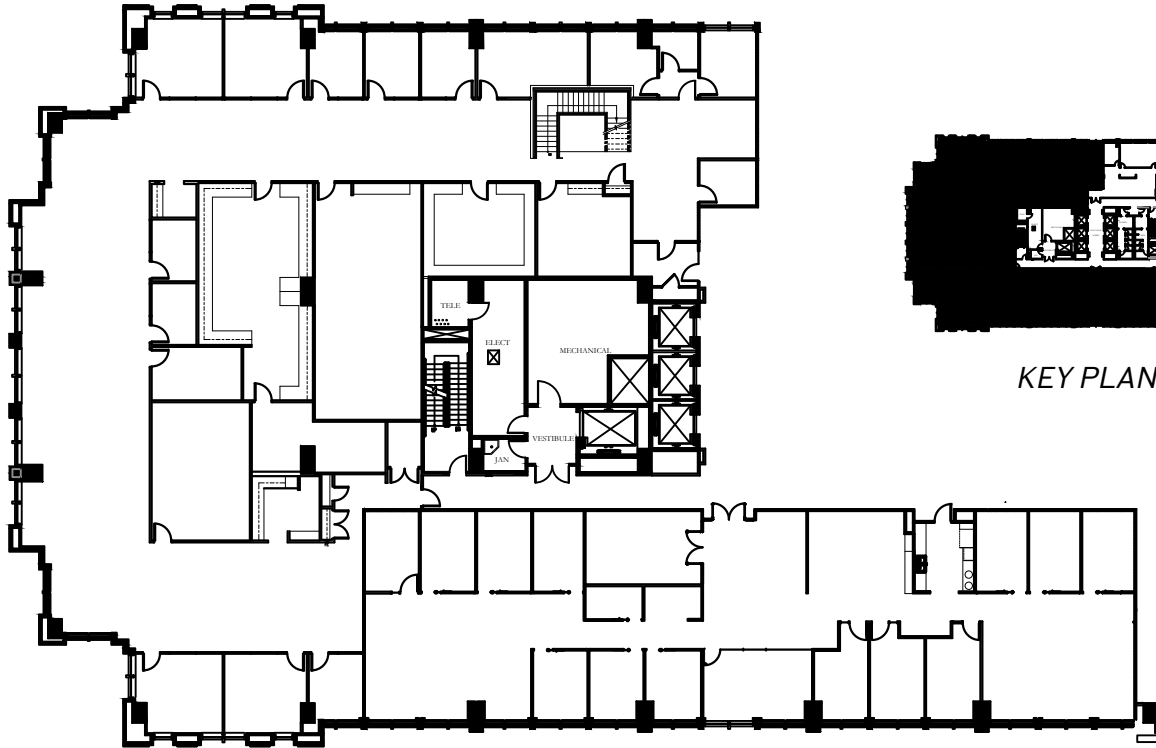




ROSEWOOD | COURT

Suite 1030/1050

18,964 RSF



KEY PLAN



For leasing information contact:

Kim Brooks
(972) 361-1122
kim.brooks@transwestern.com

Scott Walker
(972) 774-2504
scott.walker@transwestern.com

Laney Delin
(214) 237-5020
laney.delin@transwestern.com