

575 Professional Drive, Lawrenceville, GA 30046

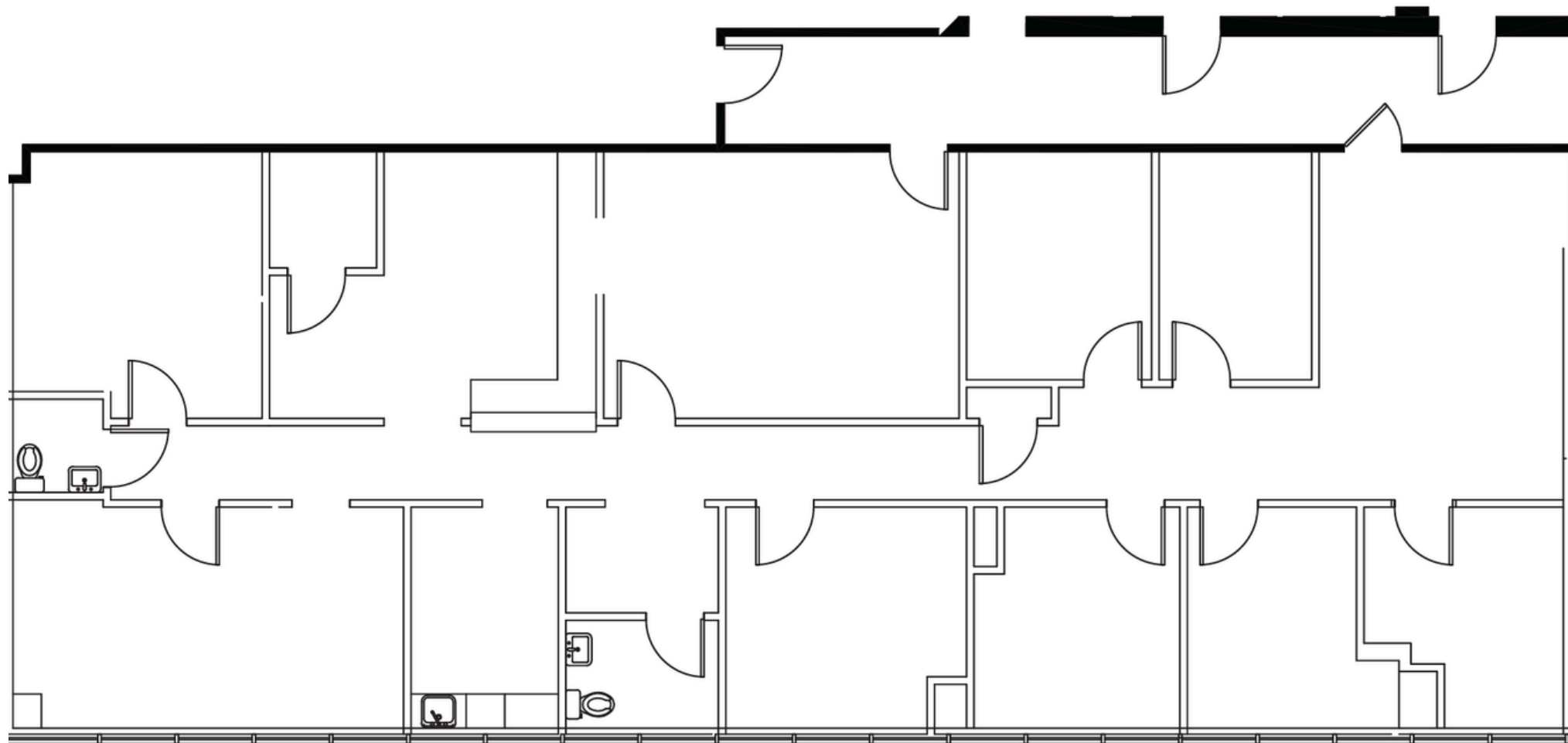
Gwinnett Medical Building

SUITE 580 • 2,791 RSF AVAILABLE

2,791 RSF Available

5th Floor

Full Medical Build-Out



 Transwestern

STEVE HALL
Healthcare Advisory Services
404.842.6560
steve.hall@transwestern.com

JOHN V. LOPEZ, CCIM, RPA
Healthcare Advisory Services
404.842.6562
john.lopez@transwestern.com
