



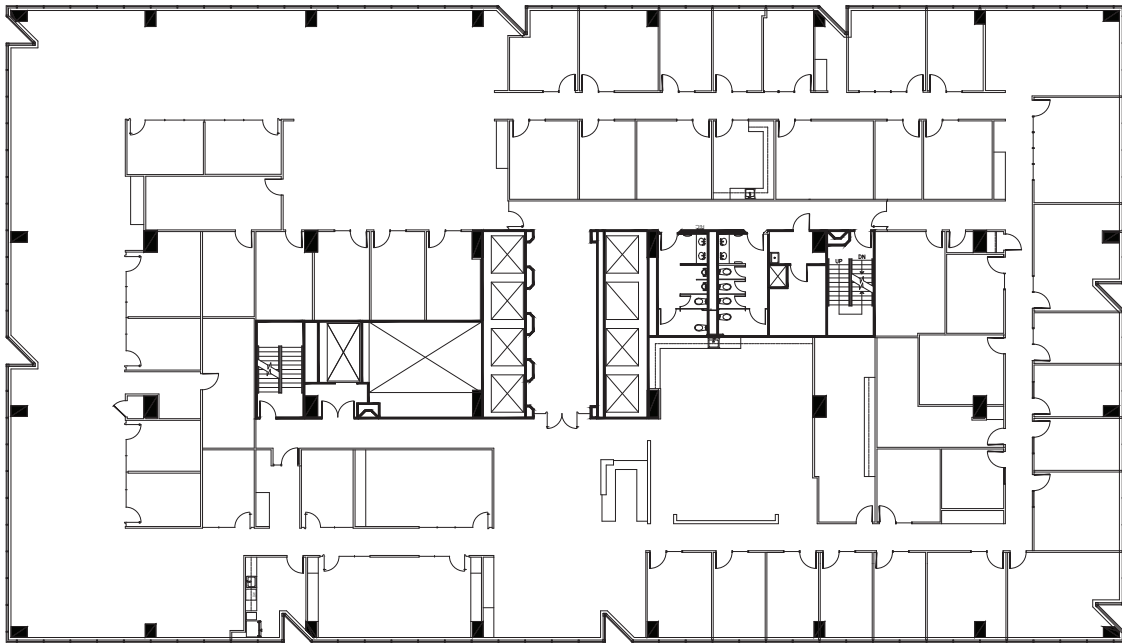
PACIFIC OAK

ONE TWENTY FIVE East John Carpenter

125 EAST JOHN CARPENTER FWY, IRVING, TX 75062

6TH FLOOR

25,701 RSF



FOR LEASING INFORMATION:

[Chris Lipscomb](#) | 214.237.5022 | chris.lipscomb@transwestern.com

[Laney Delin](#) | 214.237.5020 | laney.delin@transwestern.com

 TRANSWESTERN

www.transwestern.com