

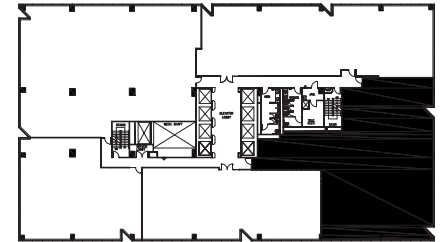
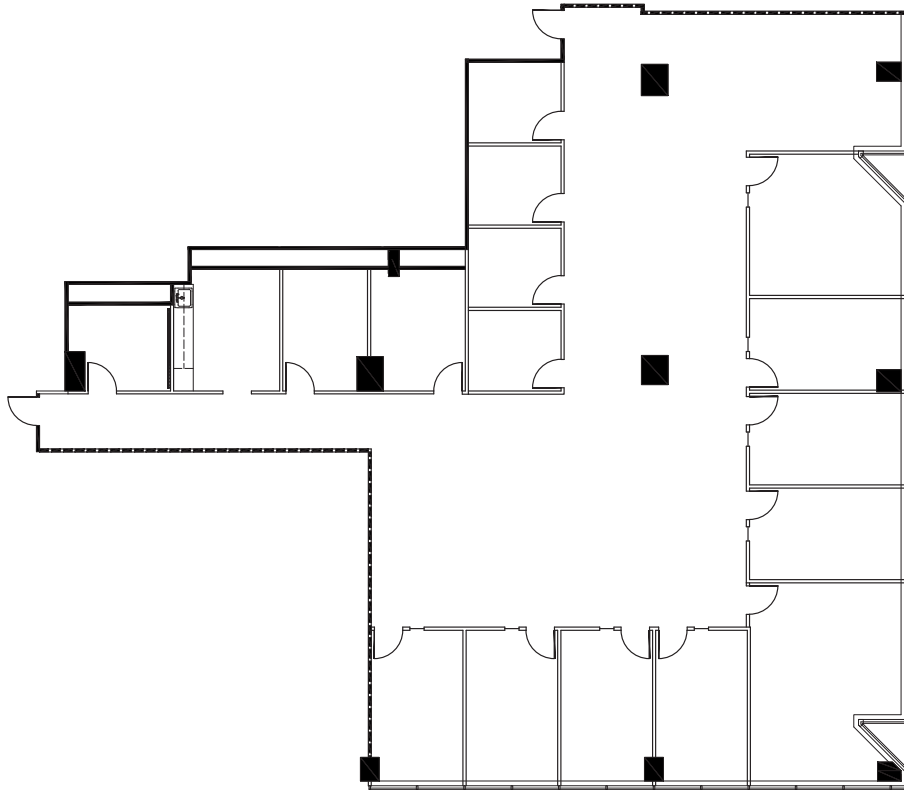
# ONE TWENTY FIVE

## East John Carpenter

125 EAST JOHN CARPENTER FWY, IRVING, TX 75062

### Suite 925

6,117 RSF



KEY PLAN



FOR LEASING INFORMATION:

**Chris Lipscomb** | 214.237.5022 | [chris.lipscomb@transwestern.com](mailto:chris.lipscomb@transwestern.com)

**Laney Delin** | 214.237.5020 | [laney.delin@transwestern.com](mailto:laney.delin@transwestern.com)