

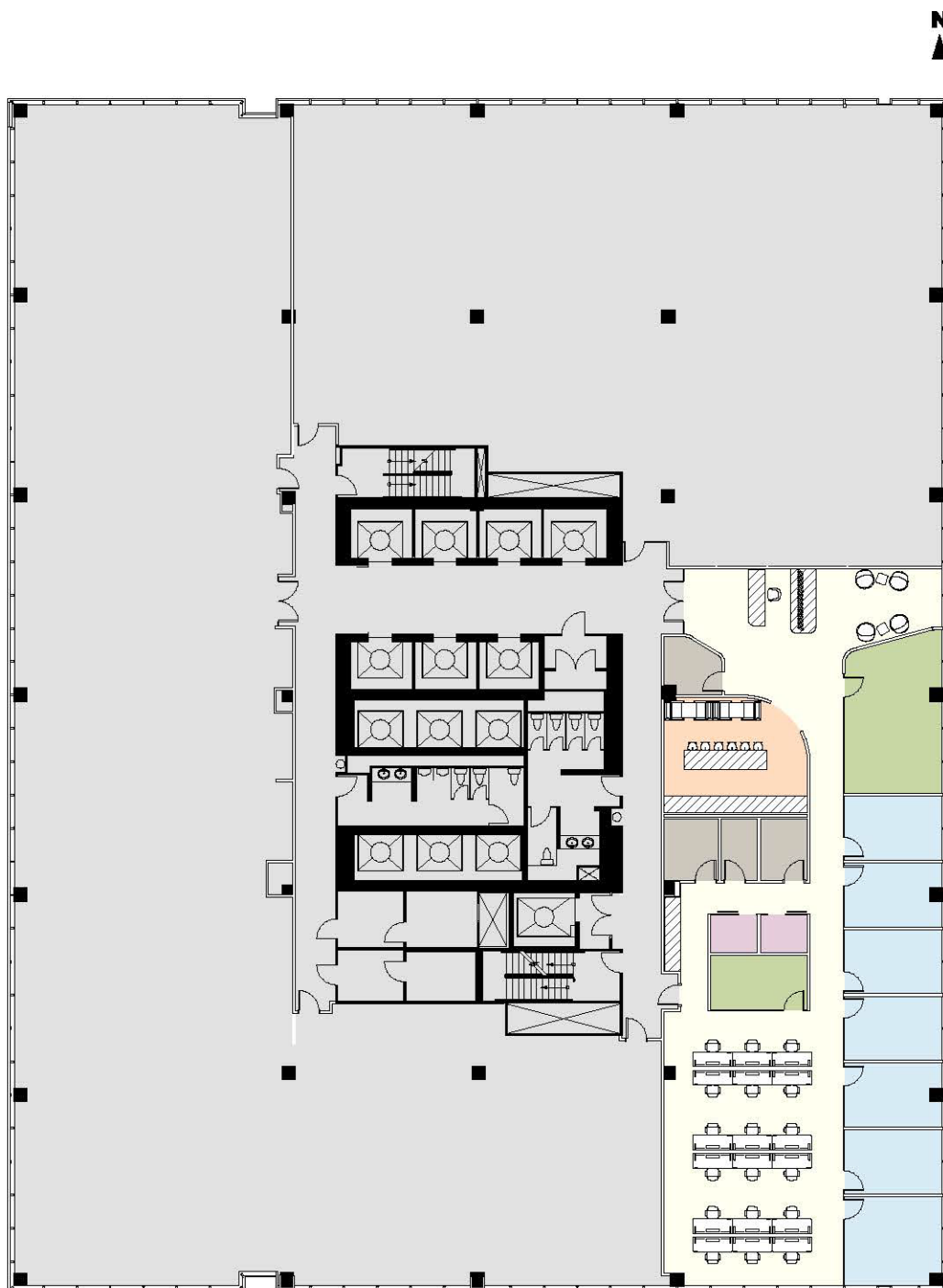
# STE 2050

5,764 SF /// Spec Suite

## Suite Notes

- 7 Private Offices
- 18 Workstations
- 2 Meeting Rooms
- 2 Phone Rooms
- Mail Room
- Storage
- Pantry
- Copy/Print Stations
- Reception

Click here to take a tour with  
 **VTS | Marketplace**



**KATIE STEELE**

312.881.7062

**KATHLEEN BERTRAND**

312.881.7046

**ERIC MYERS**

312.881.7017