

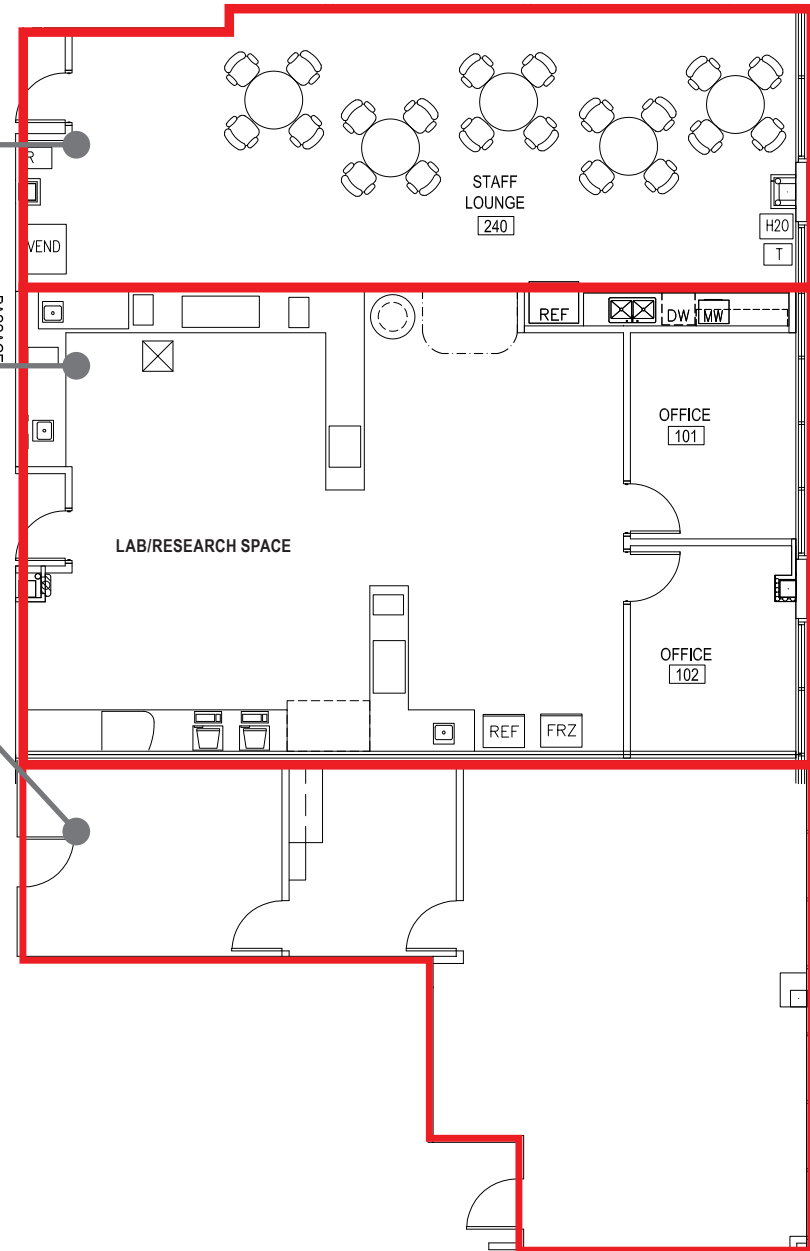
# BILTMORE MEDICAL MALL

2222 E HIGHLAND AVE | PHOENIX, AZ

**STAFF LOUNGE: ±895 SF**

**SUITE 415: ±1,509 SF**  
**CONTIGUOUS UP TO ±3,445 SF**

**SUITE 425A: ±1,041 SF**  
**CONTIGUOUS UP TO ±3,445 SF**



**TRANSWESTERN** REAL ESTATE SERVICES

2501 East Camelback Road, Suite 1  
Phoenix, Arizona 85016  
T 602.956.5000 F 602.956.5333  
[transwestern.com](http://transwestern.com)

## LEASING INFORMATION:

### Vince Femiano

Senior Vice President

602.954.7559

[vince.femiano@transwestern.com](mailto:vince.femiano@transwestern.com)

### Kate Morris

Senior Vice President

602.296.6369

[kate.morris@transwestern.com](mailto:kate.morris@transwestern.com)

### Kevin Smigiel

Senior Associate

602.265.5502

[kevin.smigiel@transwestern.com](mailto:kevin.smigiel@transwestern.com)

THE INFORMATION PROVIDED HEREIN WAS OBTAINED FROM SOURCES BELIEVED RELIABLE; HOWEVER, TRANSWESTERN MAKES NO GUARANTEES, WARRANTIES OR REPRESENTATIONS AS TO THE COMPLETENESS OF ACCURACY THEREOF. THE PRESENTATION OF THIS PROPERTY IS SUBMITTED SUBJECT TO ERRORS, OMISSIONS, CHANGE OF PRICE OR CONDITIONS, PRIOR TO SALE OR LEASE, OR WITHDRAWAL WITHOUT NOTICE. COPYRIGHT © 2022 TRANSWESTERN.