

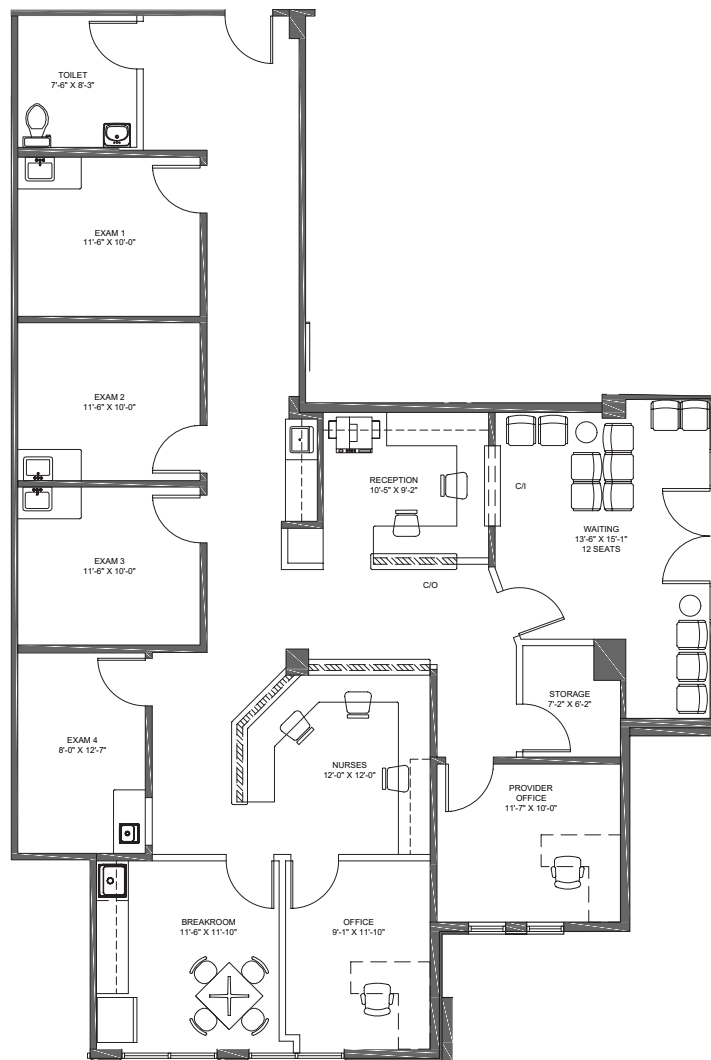
**MEDICAL OFFICE SPACE FOR LEASE**

# MAINLAND MEDICAL PLAZA

6807 EMMETT F. LOWRY EXPWY | TEXAS CITY, TEXAS 77591

1900 West Loop S  
Suite 1300  
Houston, TX 77027  
T 713.270.7700  
F 713.270.6285  
transwestern.com

## FLOOR PLAN

**SUITE 101: 1,962 SF****CONTACT****ASHLEY BYRD, EVP**

713.490.3785

ashley.cassel@transwestern.com

**CONTACT****Ashley Wensrich, Associate Broker**

713.272.1204

ashley.wensrich@transwestern.com

The information provided herein was obtained from sources believed reliable; however, Transwestern makes no guarantees, warranties or representations as to the completeness or accuracy thereof. The presentation of this property is submitted subject to errors, omissions, change of price or conditions, prior sale or lease, or withdrawal without notice. Copyright © 2025 Transwestern.