

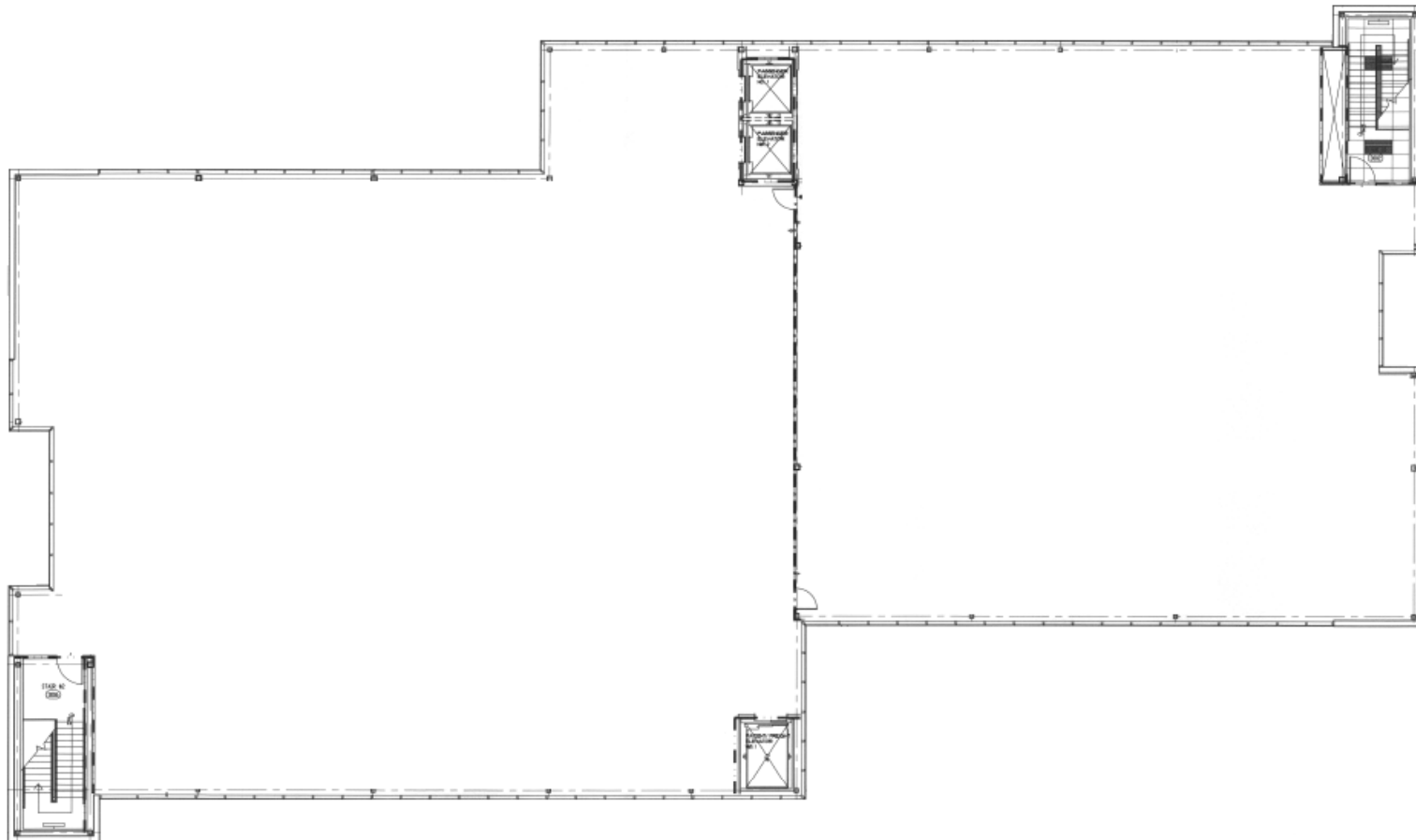
CLASS A MEDICAL OFFICE SPACE FOR LEASE

KINGWOOD EMERGENCY HOSPITAL

23330 US-59 | KINGWOOD, TEXAS 77339

FLOOR PLAN

SECOND - THIRD FLOOR: 20,000 SF



EMILY GWALTNEY

832.408.4029

emily.gwaltney@transwestern.com

SARAH CARTER

713.231.1629

sarah.carter@transwestern.com

CONTACT

LISA BOVERMANN

713.270.0457

lisa.bovermann@transwestern.com



The information provided herein was obtained from sources believed reliable; however, Transwestern makes no guarantees, warranties or representations as to the completeness or accuracy thereof. The presentation of this property is submitted subject to errors, omissions, change of price or conditions, prior sale or lease, or withdrawal without notice. Copyright © 2019 Transwestern.