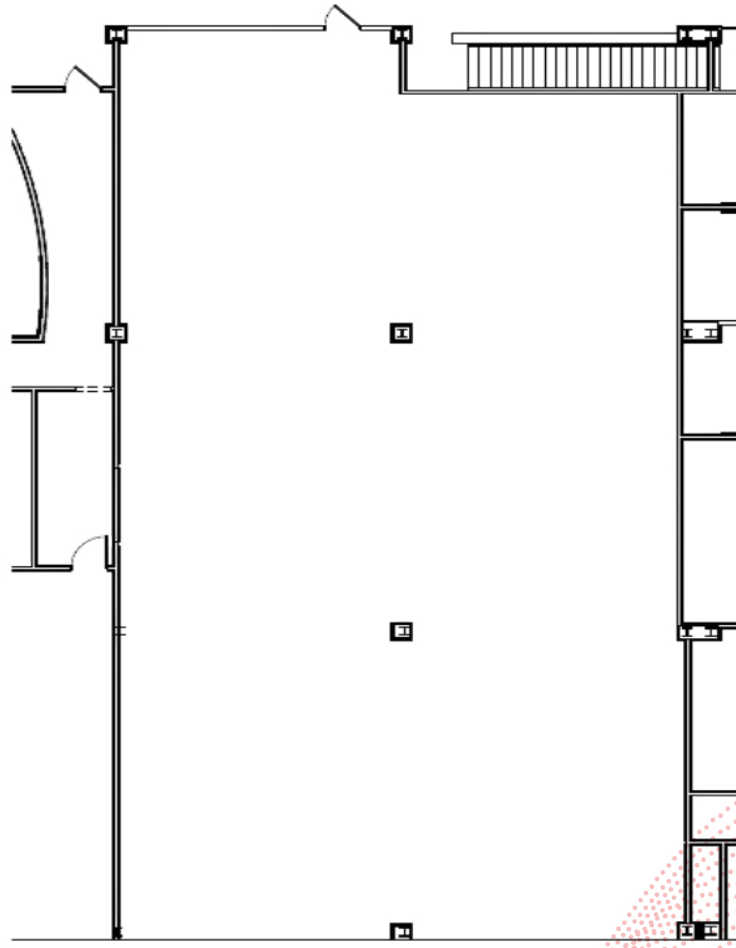


# SUITE 2220

4,920 RSF

TMC | INNOVATION FACTORY



## LEASING INFORMATION:



Lisa Bovermann  
Senior Vice President  
(832) 443-1282  
[Lisa.Bovermann@transwestern.com](mailto:Lisa.Bovermann@transwestern.com)

Kaitlyn Harp  
Associate  
(409) 673-1022  
[Kaitlyn.Harp@transwestern.com](mailto:Kaitlyn.Harp@transwestern.com)

## TMC REAL ESTATE LEASING

2450 Holcombe Blvd, Suite 1700  
Houston, TX 77006  
[Leasing@tmc.edu](mailto:Leasing@tmc.edu)