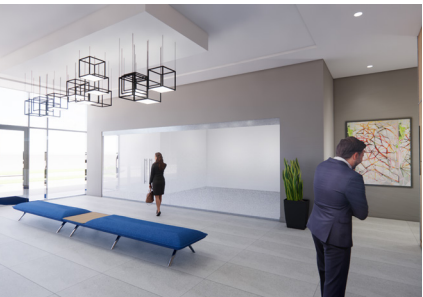


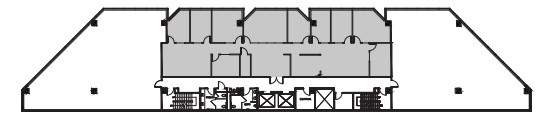
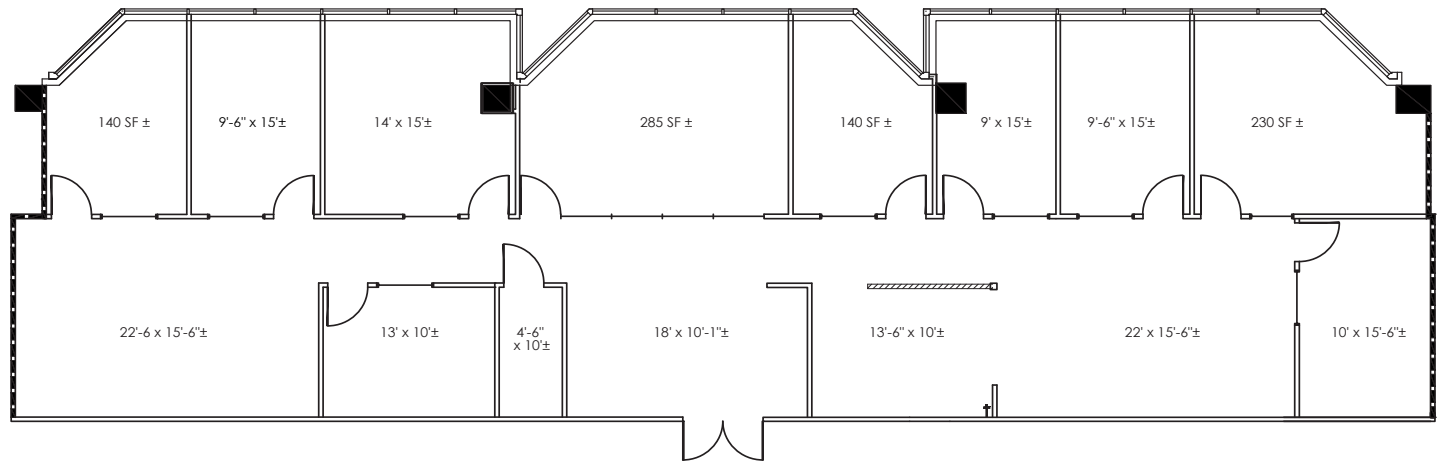
5100

N. O'CONNOR BLVD



SUITE 325

RSF: 4,045



FOR LEASING INFORMATION

CHRIS LIPSCOMB

214.237.5022

chris.lipscomb@transwestern.com

LANEY DELIN

214.237.5022

laney.delin@transwestern.com



PACIFIC OAK



TRANSWESTERN