

CONROE 500

500 Medical Center Blvd - Conroe, TX 77304

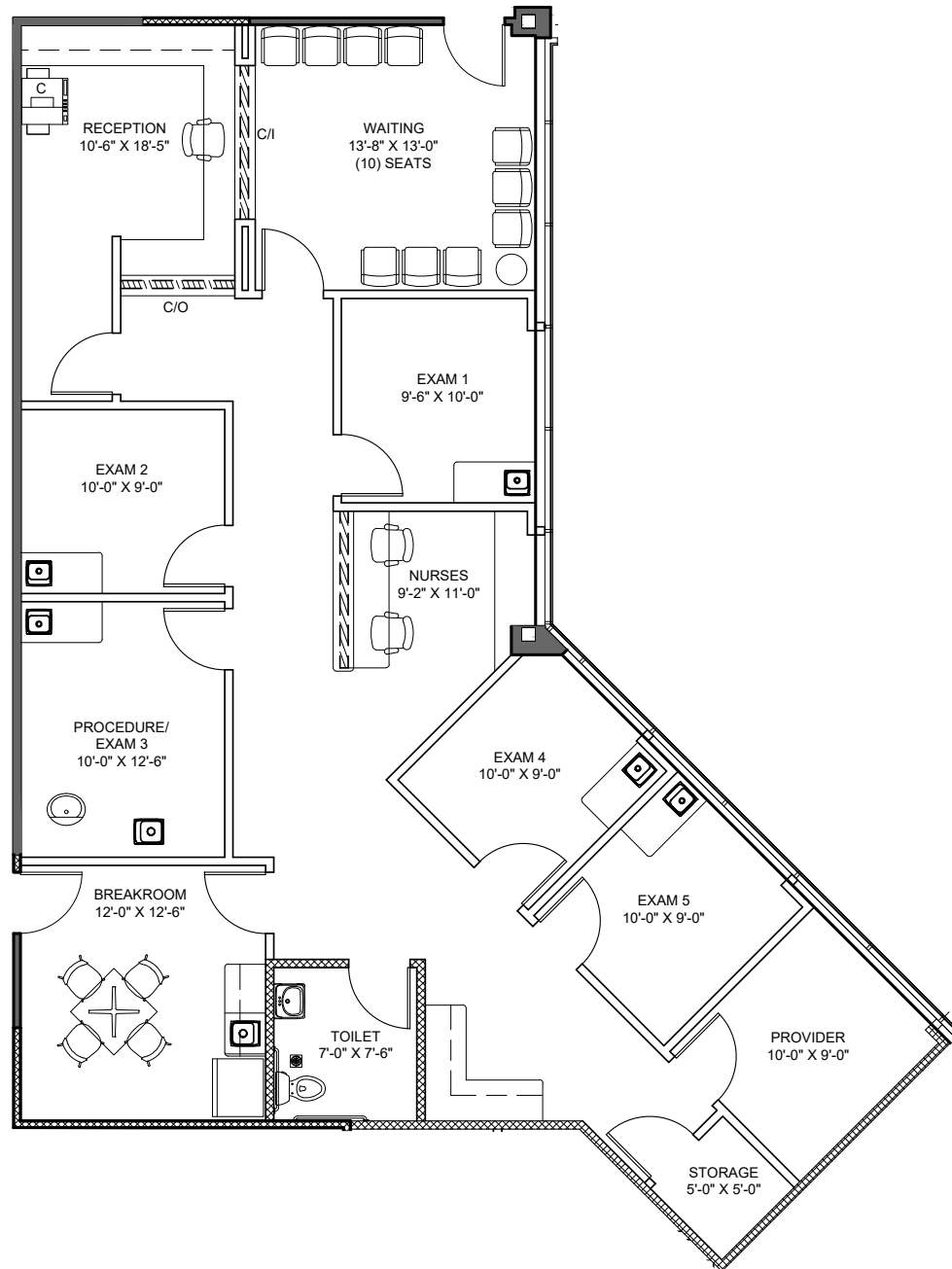


TRANSWESTERN

REAL ESTATE
SERVICES

Floor Plan | Suite 365 | 2,047 SF

Planned Spec Suite - Estimated delivery Q2 2024



Leasing Information:

Sarah Carter | VP

713.231.1629

Sarah.Carter@transwestern.com

Elise Pantazis | Associate

713.231.1580

Elise.Pantazis@transwestern.com

The information provided herein was obtained from sources believed reliable; however, Transwestern makes no guarantees, warranties or representations as to the completeness or accuracy thereof. The presentation of this property is submitted subject to errors, omissions, change of price or conditions, prior sale or lease, or withdrawal without notice. Copyright © 2023 Transwestern.

CONROE 500

500 Medical Center Blvd - Conroe, TX 77304

Floor Plan | Suite 365 | 2,047 SF

Spec Suite Finishes - Estimated delivery Q2 2024



TRANSWESTERN

REAL ESTATE
SERVICES



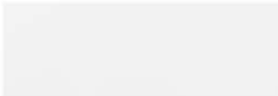
VF1: MOHAWK GROUP
PREMIUM WOOD |
939 BAY LEAF
(LUXURY VINYL TILE)



VF1: ARMSTRONG
51810 WASHED LINEN
(VINYL COMPOSITION TILE)



T1: CAESAR
WAVES | MALIBU
(PORCELAIN TILE)



T2: DAL TILE
ANNAPOLIS REMIX | AP06 SAIL
(PORCELAIN TILE)



SS1: CORIAN QUARTZ
CALACATTA NATURA
(SOLID SURFACE)



WC1: MOMENTUM
TOWER | SHADES OF OMBRE
T2-SR-02 ZEPHYR
(WALL COVERING)



PT1: SHERWIN WILLIAMS
SW 7004 SNOWBOUND
(FIELD PAINT)



PT2: SHERWIN WILLIAMS
SW 6072 VERSATILE GREY
(ACCENT PAINT)



PL2: WILSONART (COUNTERTOP)
4943-38 CLASSIC LINEN
(PLASTIC LAMINATE)



PL3: WILSONART
(MILLWORK)
8231K-79 VALLEY FORGE ELM
(PLASTIC LAMINATE)



PL4: WILSONART (UPPERS)
5012K-19 MAGNOLIA
(PLASTIC LAMINATE)



PL5: FORMICA (PANELS/
INTERIOR DOORS)
5793-NG BUFF ELM
(PLASTIC LAMINATE)

Leasing Information:

Sarah Carter | VP

713.231.1629

Sarah.Carter@transwestern.com

Elise Pantazis | Associate

713.231.1580

Elise.Pantazis@transwestern.com

The information provided herein was obtained from sources believed reliable; however, Transwestern makes no guarantees, warranties or representations as to the completeness or accuracy thereof. The presentation of this property is submitted subject to errors, omissions, change of price or conditions, prior sale or lease, or withdrawal without notice. Copyright © 2023 Transwestern.