

OFFICE
LEASE

133,874 SF

CLASS A
OFFICE SPACE



 **TRANSWESTERN**
REAL ESTATE
SERVICES

TIMBERLANDS III

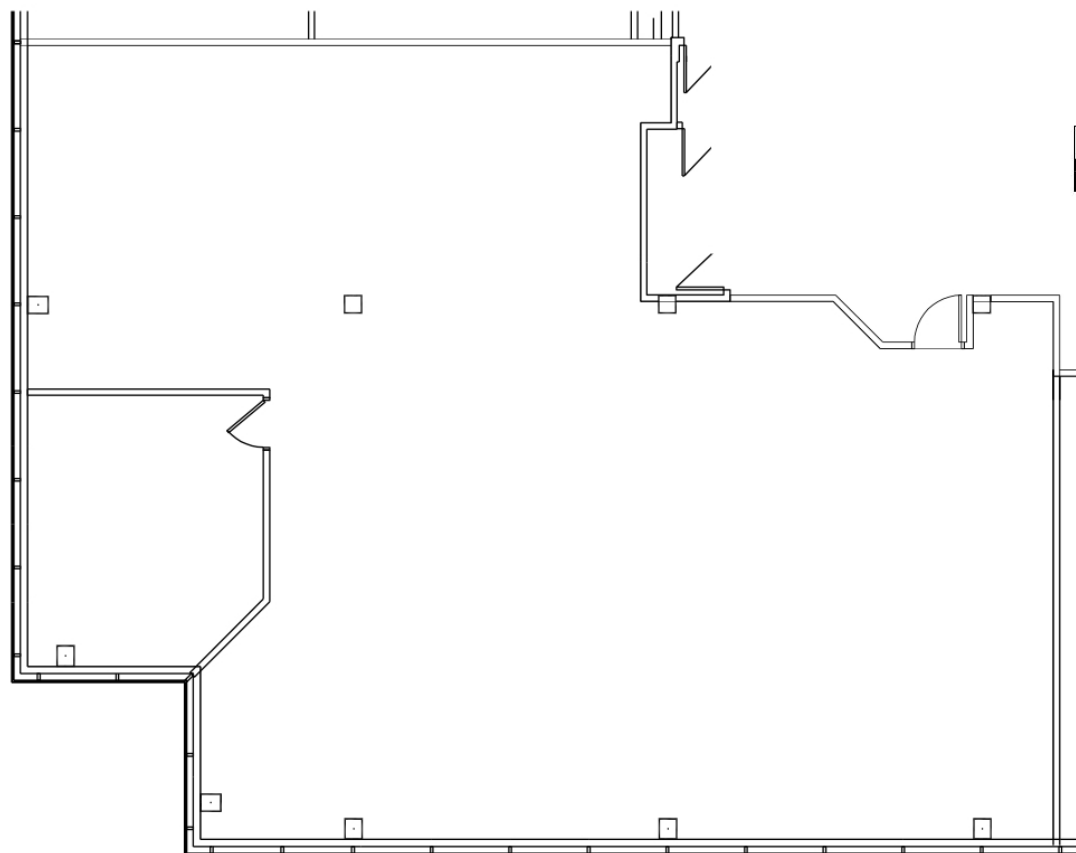
5445 CORPORATE DRIVE | TROY, MI 48098

FLOOR PLAN

SUITE 310 | 3,271 SF



NORTH



Leasing Information:

**Bill
Harvey**
248.797.9455
bill.harvey@transwestern.com

**Chuck
Howard**
248.821.7772
charles.howard@transwestern.com

The information provided herein was obtained from sources believed reliable; however, Transwestern makes no guarantees, warranties or representations as to the completeness of accuracy thereof. The presentation of this property is submitted subject to errors, omissions, change of price or conditions, prior to sale or lease, or withdrawal without notice. Copyright © 2020 Transwestern.