

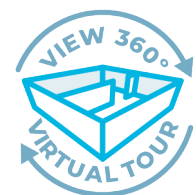
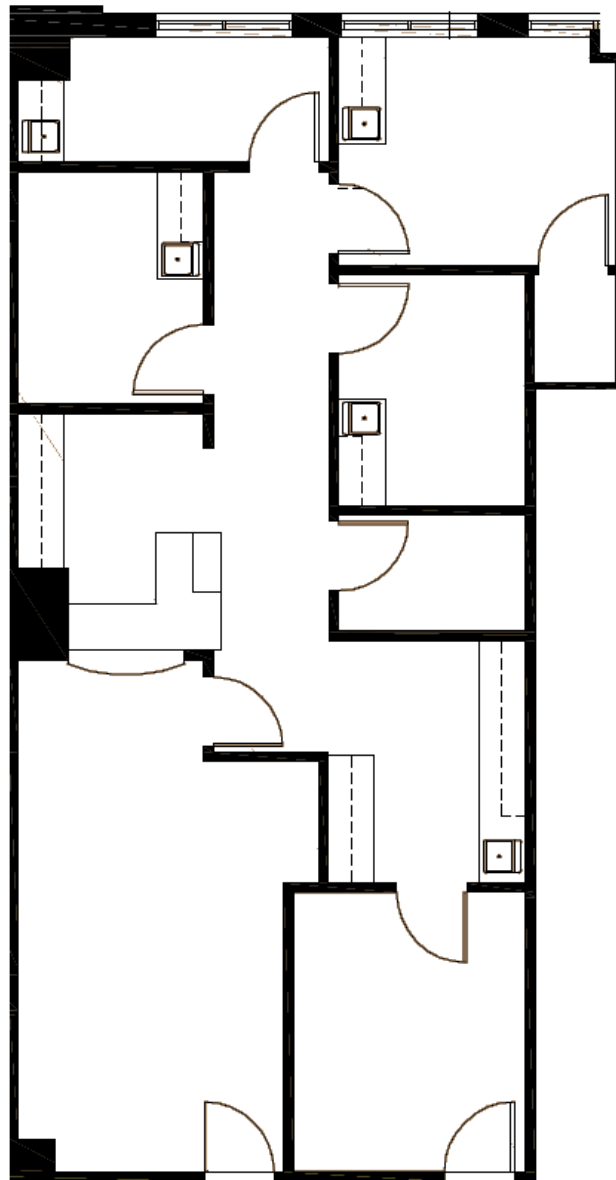
MEDICAL OFFICE SPACE FOR LEASE

MAINLAND MEDICAL PLAZA

6807 EMMETT F. LOWRY EXPWY | TEXAS CITY, TEXAS 77591

FLOOR PLAN

SUITE 306: 1,240 SF



CONTACT

ASHLEY CASSEL, SVP

713.490.3785

ashley.cassel@transwestern.com

The information provided herein was obtained from sources believed reliable; however, Transwestern makes no guarantees, warranties or representations as to the completeness or accuracy thereof. The presentation of this property is submitted subject to errors, omissions, change of price or conditions, prior sale or lease, or withdrawal without notice. Copyright © 2018 Transwestern.