

GREENHOUSE MEDICAL PLAZA

2051 Greenhouse Road | Houston, Texas 77084

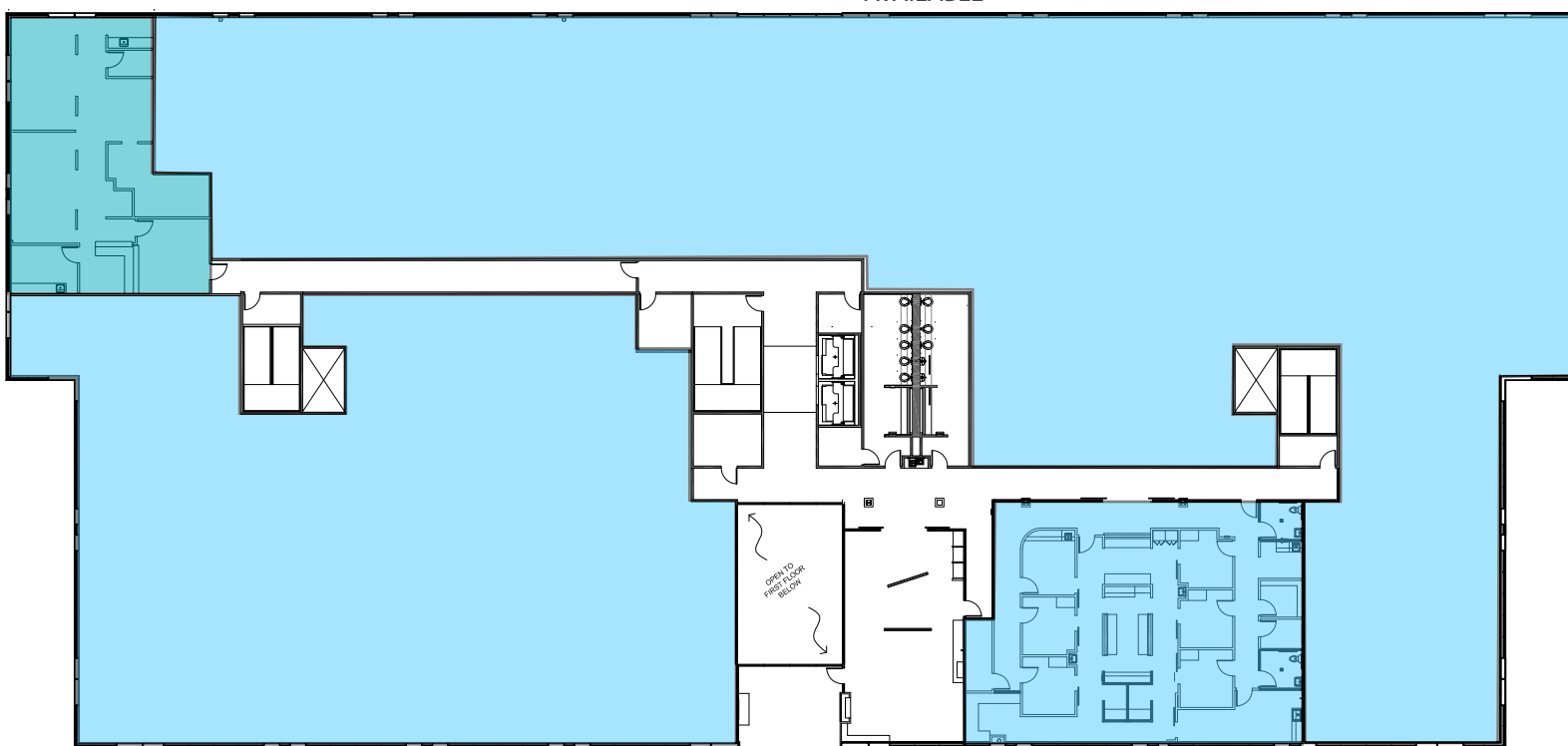


TRANSWESTERN

REAL ESTATE
SERVICES

Second Floor
36,220 SF
Available

SUITE 210
21,196 SF
AVAILABLE



SUITE 280
11,709 SF
AVAILABLE

LOUNGE AND
CONFERENCE CENTER

SUITE 270
3,315 SF
AVAILABLE



Leasing Information:

Justin Brasell
713.231.1595
Justin.Brasell@transwestern.com

Heinrich Cronje
832.408.4067
Heinrich.Cronje@transwestern.com

The information provided herein was obtained from sources believed reliable; however, Transwestern makes no guarantees, warranties or representations as to the completeness of accuracy thereof. The presentation of this property is submitted subject to errors, omissions, change of price or conditions, prior to sale or lease, or withdrawal without notice. Copyright © 2020 Transwestern.