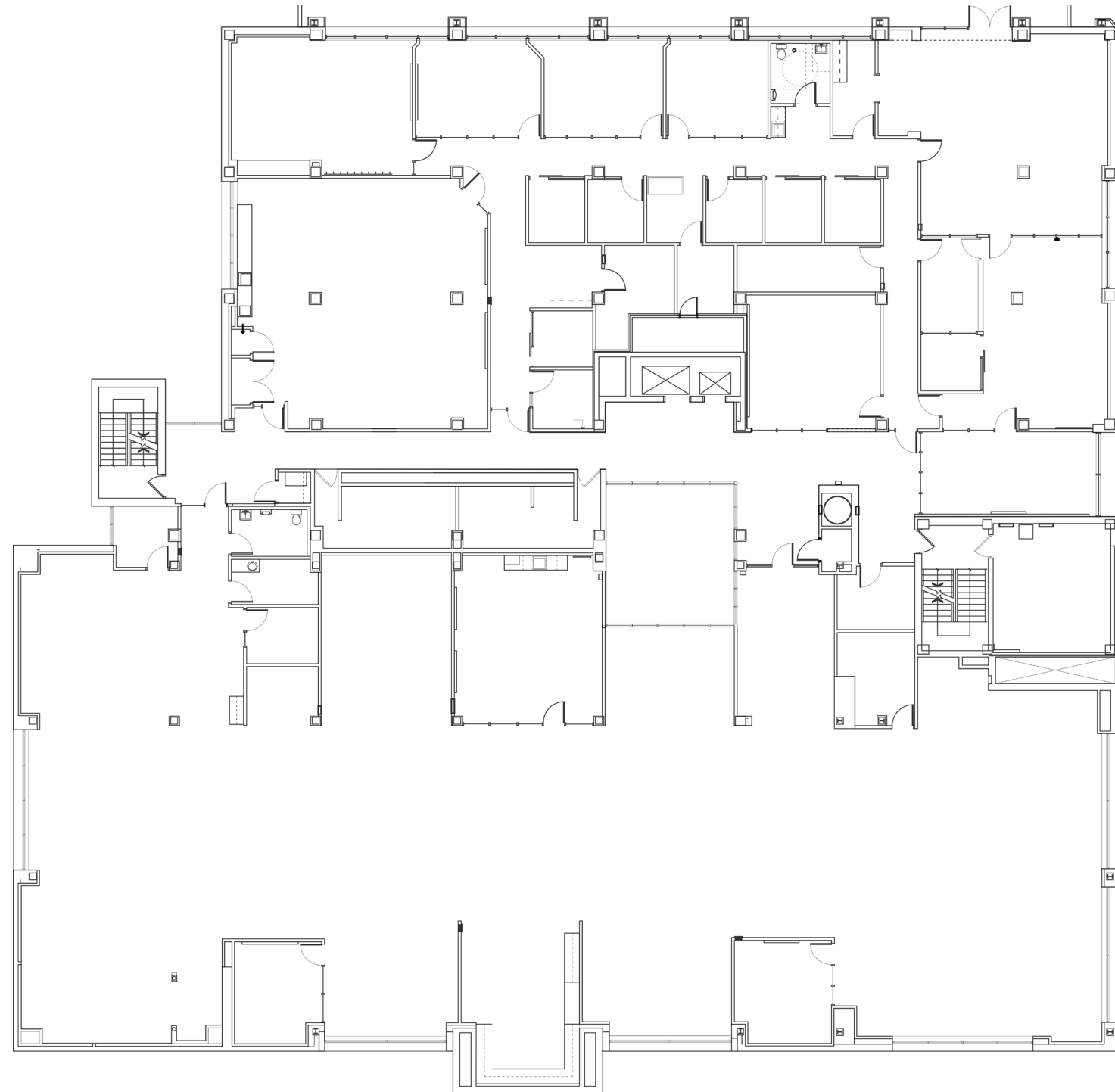


Woodlake Health and Office Centre

Suite 200 | 20,188 SF



MEDICAL / OFFICE LEASING

FRANK RICHIE

Senior Vice President
612.359.1674

frank.richie@transwestern.com

TRINETTE WACKER

Vice President
612.372.1230

trinette.wacker@transwestern.com

MAX STEWART

Associate
612.268.5314

max.stewart@transwestern.com