

# WEST MEDICAL ONE

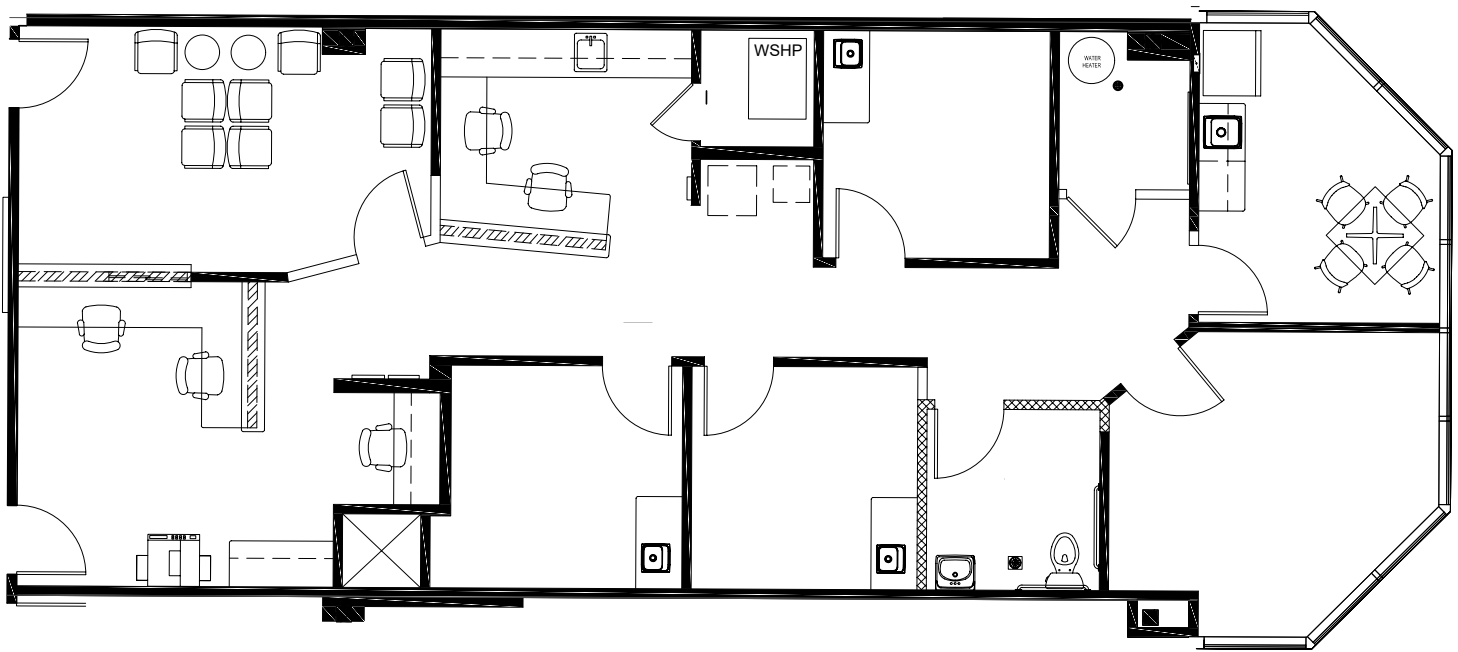
12121 Richmond Ave. | Houston, TX 77082



TRANSWESTERN

REAL ESTATE  
SERVICES

Floor Plan | Suite 217 | 1,760 SF



## Leasing Information:

**Ashley Byrd - EVP**

713.490.3785

[ashley.byrd@transwestern.com](mailto:ashley.byrd@transwestern.com)

**Sara Kelly - Associate**

713.231.1620

[Sara.Kelly@transwestern.com](mailto:Sara.Kelly@transwestern.com)

Healthpeak®

DOC  
LISTED  
NYSE

The information provided herein was obtained from sources believed reliable; however, Transwestern makes no guarantees, warranties or representations as to the completeness of accuracy thereof. The presentation of this property is submitted subject to errors, omissions, change of price or conditions, prior to sale or lease, or withdrawal without notice. Copyright © 2023 Transwestern.

# WEST MEDICAL ONE

12121 Richmond Ave. | Houston, TX 77082



TRANSWESTERN

REAL ESTATE  
SERVICES

Floor Plan | Spec Suite Finishes 217 | 1,760 SF



VF1: MOHAWK | SECOYA 2.5  
C2103 848 HAZELNUT OAK  
(LUXURY VINYL TILE)



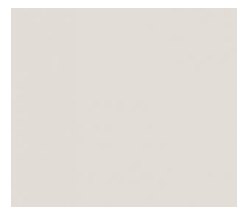
SS1: CORIAN | TRANS. TOPS  
CALACATTA NATURA (SOLID  
SURFACE)



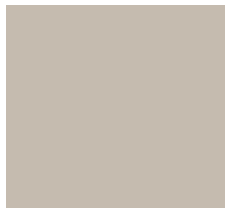
PL3: PIONITE | INTERIOR DOORS,  
LOWER PANELS & LOWER CABI-  
NETS) WW160FL PRALINE & CREAM  
(PLASTIC LAMINATE)



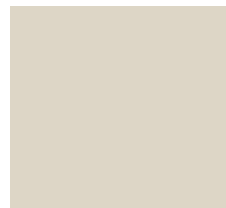
ACCENT WALL PANELS



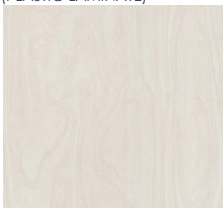
PT1: SHERWIN WILLIAMS  
SW 7035 AESTHETIC WHITE  
(FIELD PAINT)



BS1: JOHNSONITE 31  
ZEPHYR CB (RUBBER  
WALL BASE)



PL2: ARBORITE | COUNTERTOPS  
S431 WILLOW GREY (PLASTIC  
LAMINATE)



PL4: FORMICA | (UPPER PANELS &  
UPPER CABINETS) 6372NG WHITE  
WASHED (PLASTIC LAMINATE)



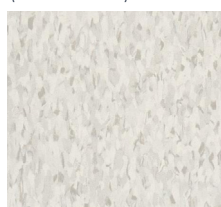
PT3: SHERWIN WILLIAMS  
SW 7603 POOLHOUSE  
(ACCENT PAINT)



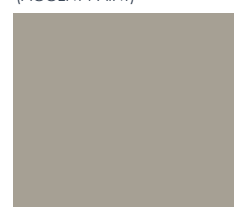
PT2: SHERWIN WILLIAMS  
SW 7037 BALANCED BEIGE  
(ACCENT PAINT)



T1: ARIZONA | FLOOR & WALL TILE  
METALWOOD PLANTINO  
(PORCELAIN TILE)



VT1: ARMSTRONG  
59234 SILK  
(VINYL COMPOSITION TILE)



BS2: JOHNSONITE  
121 CEMENT  
(RUBBER WALL BASE)

## Leasing Information:

**Ashley Byrd - EVP**

713.490.3785

Ashley.Byrd@transwestern.com

**Sara Kelly - Associate**

713.231.1620

Sara.Kelly@transwestern.com

The information provided herein was obtained from sources believed reliable; however, Transwestern makes no guarantees, warranties or representations as to the completeness of accuracy thereof. The presentation of this property is submitted subject to errors, omissions, change of price or conditions, prior to sale or lease, or withdrawal without notice. Copyright © 2023 Transwestern.