

OFFICE  
LEASE

129,562 SF

CLASS A  
OFFICE SPACE



  
TRANSWESTERN  
REAL ESTATE  
SERVICES

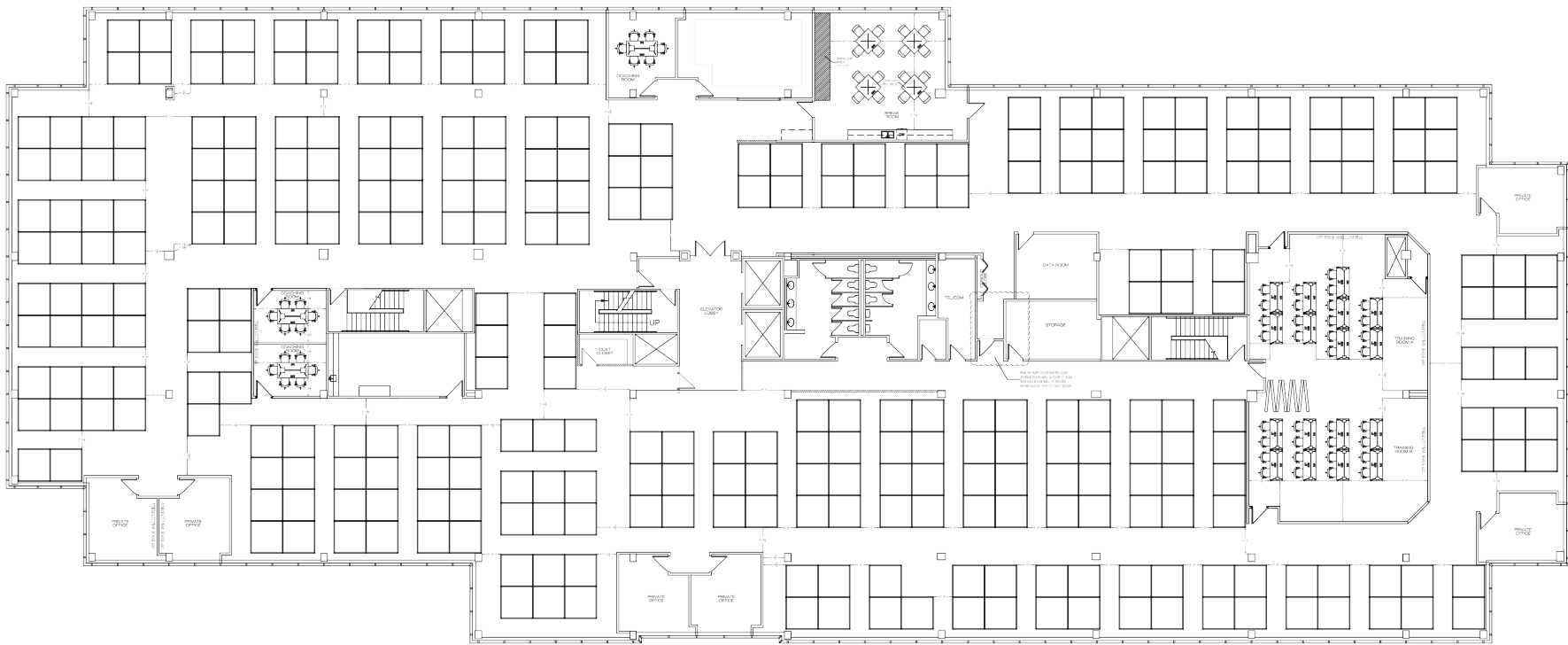
# TIMBERLANDS IV

1450 W LONG LAKE RD | TROY, MI 48098

## FLOOR PLAN

SUBLEASE | 4TH FLOOR | 34,473 SF

311 TOTAL WORKSTATIONS | 6X6



### Leasing Information:

**Bill  
Harvey**  
248.797.9455  
bill.harvey@transwestern.com

**Chuck  
Howard**  
248.821.7722  
charles.howard@transwestern.com

The information provided herein was obtained from sources believed reliable; however, Transwestern makes no guarantees, warranties or representations as to the completeness of accuracy thereof. The presentation of this property is submitted subject to errors, omissions, change of price or conditions, prior to sale or lease, or withdrawal without notice. Copyright © 2020 Transwestern.

OFFICE  
LEASE

129,562 SF

CLASS A  
OFFICE SPACE



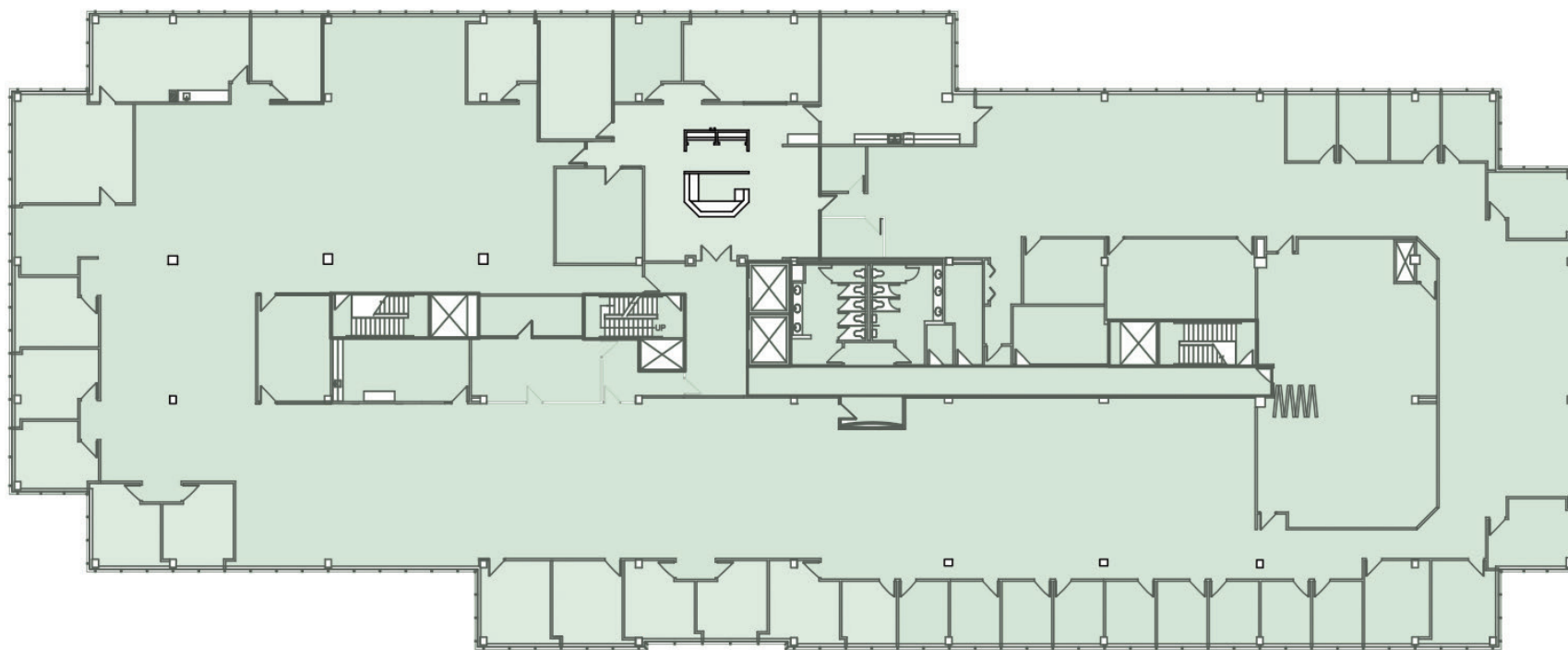
 **TRANSWESTERN**  
REAL ESTATE  
SERVICES

# TIMBERLANDS IV

1450 W LONG LAKE RD | TROY, MI 48098

FLOOR PLAN

SUBLEASE | 4TH FLOOR | 34,473 SF



## Leasing Information:

**Bill  
Harvey**  
248.797.9455  
bill.harvey@transwestern.com

**Chuck  
Howard**  
248.821.7722  
charles.howard@transwestern.com

The information provided herein was obtained from sources believed reliable; however, Transwestern makes no guarantees, warranties or representations as to the completeness of accuracy thereof. The presentation of this property is submitted subject to errors, omissions, change of price or conditions, prior to sale or lease, or withdrawal without notice. Copyright © 2020 Transwestern.