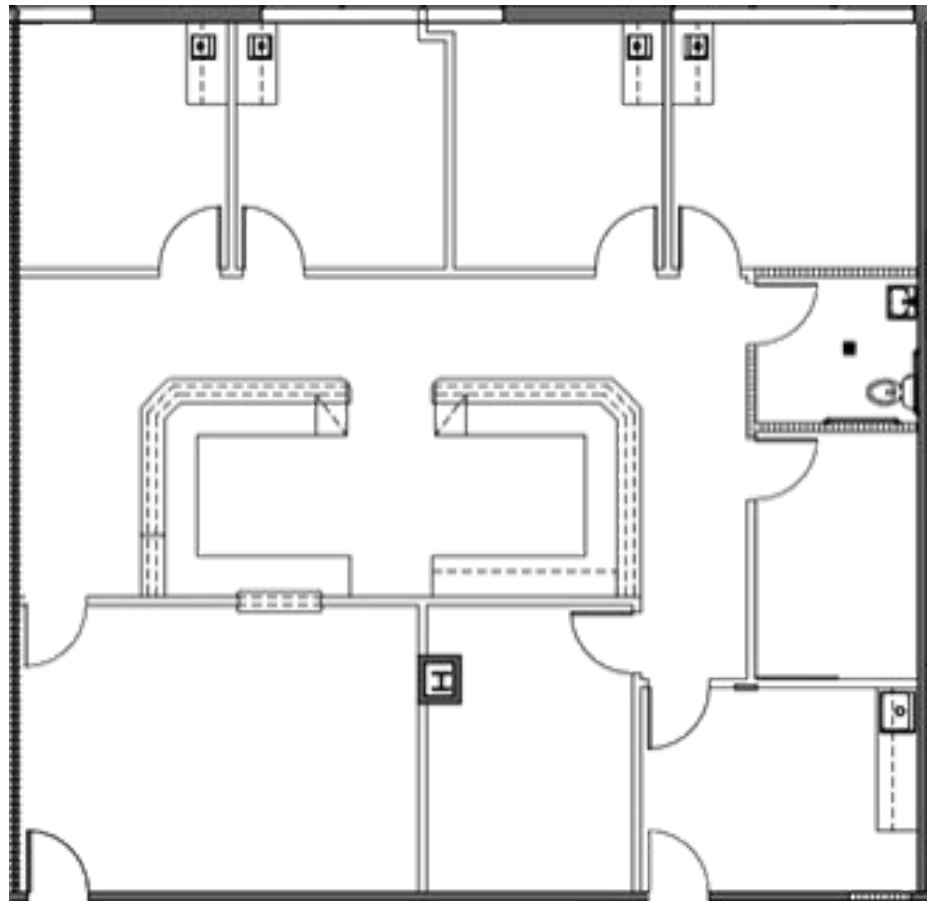


# KINGWOOD MEDICAL ARTS

350 Kingwood Medical Drive | Kingwood, TX 77339

**Suite 220**  
**2,305 SF**



## Leasing Information:

**Sarah Carter | VP**

713.231.1629

[Sarah.Carter@transwestern.com](mailto:Sarah.Carter@transwestern.com)

**Elise Jaco | Associate**

713.231.1580

[Elise.Jaco@transwestern.com](mailto:Elise.Jaco@transwestern.com)



TRANSWESTERN

Healthpeak®

DOC  
LISTED  
NYSE

The information provided herein was obtained from sources believed reliable; however, Transwestern makes no guarantees, warranties or representations as to the completeness of accuracy thereof. The presentation of this property is submitted subject to errors, omissions, change of price or conditions, prior to sale or lease, or withdrawal without notice. Copyright © 2024 Transwestern.