

CLASS B MEDICAL AND OFFICE SPACE FOR LEASE  
**NEW TERRITORY MEDICAL  
PROFESSIONAL BUILDING**  
4907 SANDHILL DRIVE | SUGAR LAND, TEXAS 77479

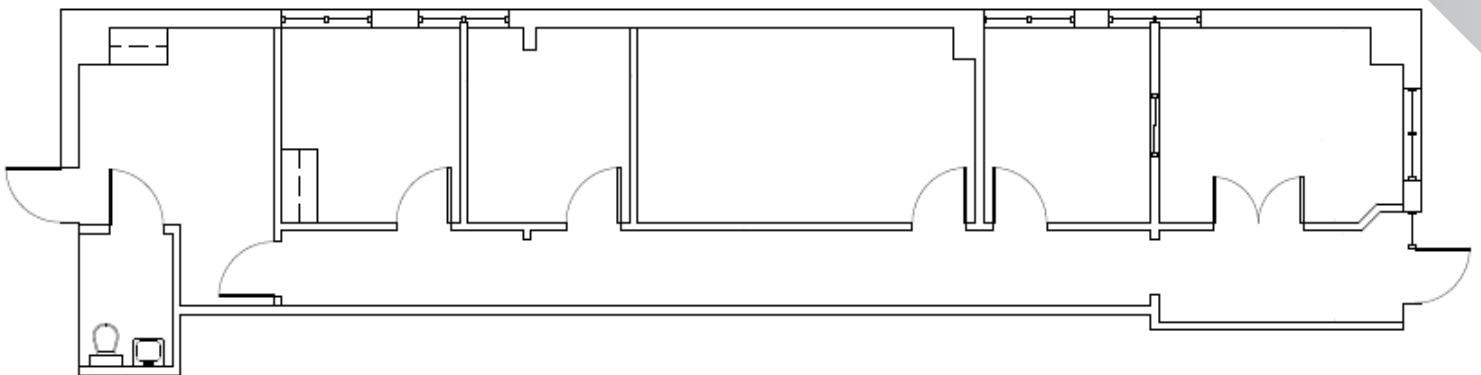


1900 West Loop S  
Suite 1300  
Houston, Texas 77027  
T: 713.230.7700  
F 13.270.6285  
transwestern.com

## FLOOR PLAN

---

SUITE F: 1,250 SF



---

## CONTACT

**JUSTIN BRASELL, EVP**

713.231.1595

Justin.Brasell@transwestern.com

**HEINRICH CRONJE**

832.408.4067

Heinrich.Cronje@transwestern.com

The information provided herein was obtained from sources believed reliable; however, Transwestern makes no guarantees, warranties or representations as to the completeness or accuracy thereof. The presentation of this property is submitted subject to errors, omissions, change of price or conditions, prior sale or lease, or withdrawal without notice. Copyright © 2018 Transwestern.